



## 2016 Ford F250 Regular Cab 2wd with New 8' Knapheide Utility Bed

Casey Graffius 717.431.8330

**Our Price \$37,950**

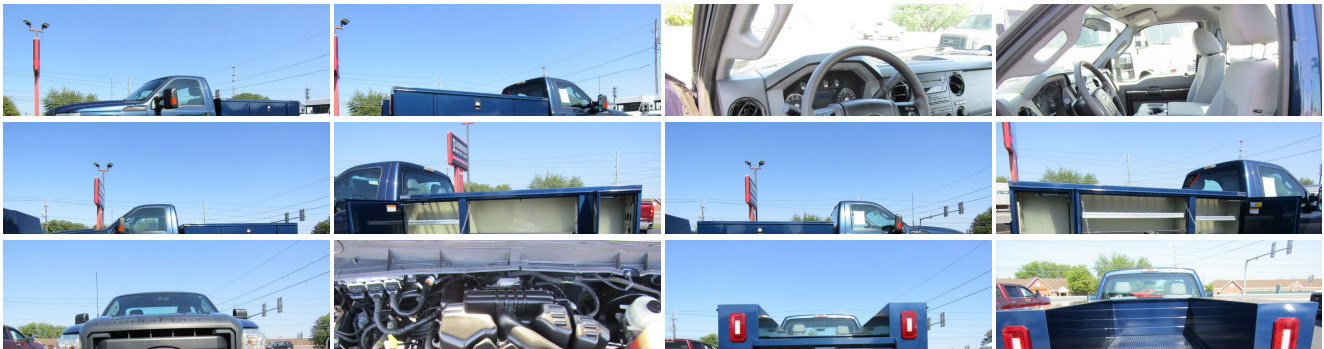
View this vehicle on our website at [jakobsenmotors.com](http://jakobsenmotors.com)

**JAKOBSEN**  
MOTOR CORP.

717.431.8330

4200 Oregon Pike, Ephrata, PA 17522

Photos  
Details  
Contact





## Specifications:

<b>Year:</b>	2016
<b>VIN:</b>	<a href="#">1FTBF2A63GEC75705</a>
<b>Make:</b>	Ford
<b>Stock:</b>	7385
<b>Model/Trim:</b>	F250 Regular Cab 2wd with New 8' Knapheide Utility Bed
<b>Condition:</b>	Pre-Owned
<b>Body:</b>	Pickup Truck
<b>Exterior:</b>	[N1] Blue Jeans
<b>Engine:</b>	6.2L Gasoline V8 385hp 405ft. lbs.
<b>Interior:</b>	Steel Gray Cloth
<b>Transmission:</b>	6-Speed Shiftable Automatic
<b>Mileage:</b>	25,919
<b>Drivetrain:</b>	Rear Wheel Drive

## Vehicle Description

1 Owner 2016 Ford F250 Regular Cab 2wd with New 8' Knapheide Utility Bed with 25,000 miles. Comes with a 6.2L V8 Engine, Cloth seats, Vinyl floor, AC, Power windows and locks, Cruise, 10,000 GVW, Tow Hitch, New Tires, PA inspected and serviced. Clean rust-free California truck! Call Casey for more information or to schedule a test drive. Visit us at our website at [www.jakobsenmotors.com](http://www.jakobsenmotors.com) for more info and photos.

## Installed Options

### Interior

- Front air conditioning- Power outlet(s): two 12V front- Power steering
- Steering wheel: tilt and telescopic- Clock- Digital odometer- Multi-function display
- Powertrain hour meter- Trip odometer- Front seat type: 40-20-40 split bench

### Exterior

- Pickup bed light- Towing mirrors- Spare wheel type: steel
- Tire Pressure Monitoring System- Wheels: steel

## Option Packages

### Factory Installed Packages

---

#### Premium Electronic AM/FM Stereo w/Single CD Player and Clock

Includes premium AM/FM stereo with MP3-capable in-dash single CD player, 4 speakers, auxiliary MP3 audio input and clock. \$275

---

#### Cloth 40/20/40 Split Bench Seat

Includes cloth 40/20/40 split bench front seat. \$100

---

#### Cruise Control

\$235

---

#### Power Equipment Group

Includes accessory delay, power door locks, remote keyless entry, perimeter anti-theft alarm, power front row windows with one-touch up and down, manually telescoping two-way folding trailer tow mirrors with power and heated glass, heated convex spotter mirror, and integrated clearance lamps and turn signals. Deletes passenger side lock cylinder. \$895

---

#### Option Packages Total

\$1,505

Jakobsen Motor Corp.

Jakobsen Motor Corp.

View this car on our website at [jakobsenmotors.com/7339695](http://jakobsenmotors.com/7339695)

Website: [jakobsenmotors.com](http://jakobsenmotors.com)

Phone: 717.431.8330

Map: 4200 Oregon Pike, Ephrata, PA 17522

