



2024 Jeep Wrangler Rubicon 392 4X4 HARD TOP,BUMPERS,LED'S,FUEL WHLS

Our Price \$136,900

View this vehicle on our website at tveauto.com

Texas Vehicle Exchange

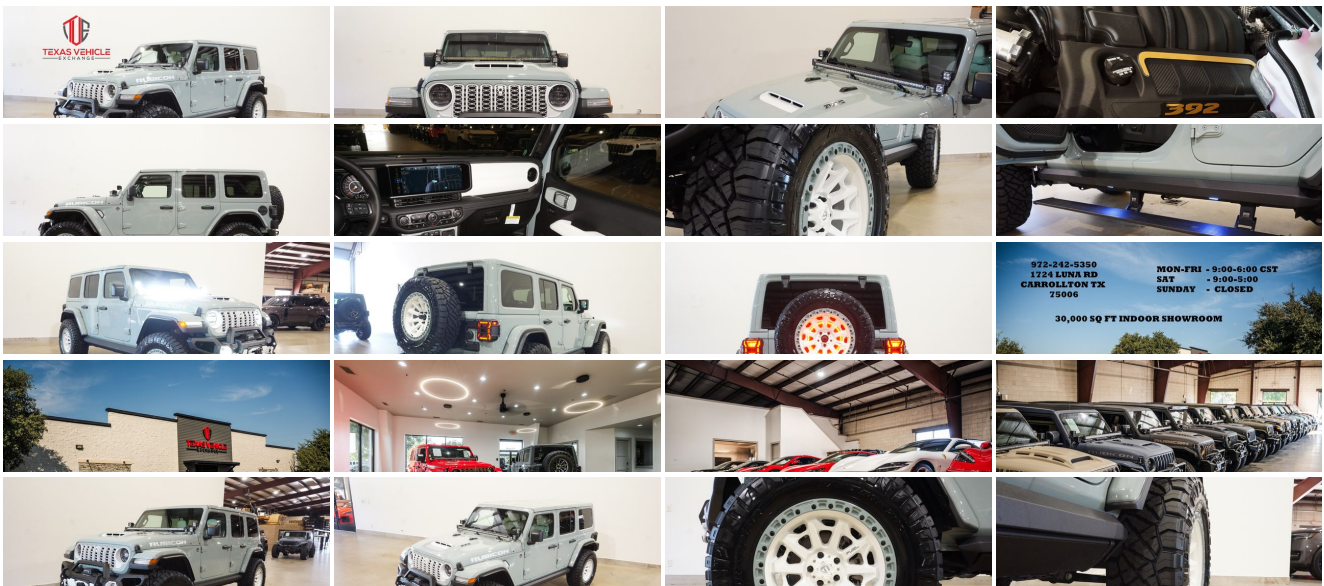
972-242-5350

1724 Luna Road , Carrollton, TX 75006

Photos

Details

Contact



Specifications:

Year:

2024

VIN:	1C4RJXSJ9RW207435
Make:	Jeep
Stock:	207435
Model/Trim:	Wrangler Rubicon 392 4X4 HARD TOP,BUMPERS,LED'S,FUEL WHLS
Condition:	Pre-Owned
Body:	SUV
Exterior:	[PGP] Earl Clear Coat
Engine:	HEMI 6.4L V8 470hp 470ft. lbs.
Interior:	White Leather
Transmission:	8-Speed Shiftable Automatic
Mileage:	78
Drivetrain:	4 Wheel Drive
Economy:	City 13 / Highway 16

Vehicle Description

NATION WIDE FINANCING

SUBMIT CREDIT APP WWW.TVEAUTO.COM

OR CALL 972-242-5350

"EARL CLEAR COAT EDITION"

CUSTOM BUILT 2024 JEEP WRANGLER JL UNLIMITED RUBICON 4X4 WITH 27X PACKAGE

UPGRADES INCLUDE:

- * EARL CLEAR COAT WITH BRIGHT WHITE ACCENTS
- * 6.4L V8 SRT HEMI ENGINE
- * PAINTED TO MATCH 3 PIECE HARD TOP
- * CUSTOM ALEA WHITE LEATHER WITH EARL STITCHING
- * INTERIOR PIECES CUSTOM PAINTED EARL CLEAR COAT
- * FACTORY REMOTE START
- * REMOTE PROXIMITY KEYLESS ENTRY
- * COLD WEATHER GROUP
- * LED LIGHTING GROUP
- * SAFETY GROUP
- * ADVANCED SAFETY GROUP

- * FORWARD FACING TRAIL CAM
- * FACTORY 12.3 INCH TOUCH SCREEN NAVIGATION WITH HD AM/FM/SIRIUS STEREO & ALPINE PREMIUM AUDIO SYSTEM
- * FACTORY BACK-UP CAMERA
- * U-CONNECT
- * RUGGED RIDGE VENATOR FRONT BUMPER WITH LED FOGLIGHTS
- * FRONT D-RINGS & ISOLATORS (BRIGHT WHITE)
- * SMITTYBILT NEW GEN 3 "X20" 10,000 LB WATERPROOF AND WIRELESS CONTROL WINCH WITH SYNTHETIC ROPE
- * FACTOR 55 PROLINK (BLACK)
- * FACTORY MESH GRILLE PAINTED BRIGHT WHITE
- * FACTORY LED HEADLIGHTS
- * RUGGED RIDGE BLACK HEADLIGHT GUARDS
- * FACTORY HOOD WITH AIR INTAKE SCOOP
- * PAINTED TO MATCH FENDER FLARES
- * TERAFLX FALCON SERIES 3 SHOCKS & RESERVOIRS
- * TERAFLX FALCON STABILIZER KIT
- * SUSPENSION PARTS PAINTED (EARL CLEAR COAT)
- * MOPAR AUXILIARY SWITCH BANK KIT
- * 50" LED LIGHT BAR AND 4 RIGID INDUSTRIES DUALY D2 LED PILLAR LIGHTS (LIGHT BRACKETS PAINTED TO MATCH)
- * AMP RESEARCH POWERSTEP XL RUNNING BOARDS WITH LED LIGHT KIT
- * EVOLUTION 2 BLACK LED TAIL LIGHTS
- * RUGGED RIDGE BLACK TAIL LIGHT GUARDS
- * RUGGED RIDGE SPARTACUS HD HINGE KIT
- * RUGGED RIDGE LED THIRD BRAKE LIGHT RING
- * RUGGED RIDGE STRYKER REAR BUMPER WITH REAR PARK DISTANCE SENSORS & 2 RIGID INDUSTRIES DUALY D2 LED LIGHTS
- * REAR D-RINGS & ISOLATORS (BRIGHT WHITE)
- * ALL WEATHER FLOOR MATS
- * TAZER JL PROGRAMMER WITH SPEEDOMETER CALIBRATION
- * 20" FUEL CUSTOM BRIGHT WHITE W/EARL RING "COVERT" WHEELS
- * BRAND NEW NITTO RIDGE GRAPPLER 37X13.50R/20 TIRES

WE BUILD EVERY JEEP WITH PRIDE! DO NOT HESITATE TO CALL US WITH THIS JEEP BUILD. WE CAN MAKE CHANGES TO THIS JEEP BUILD OR CUSTOM BUILD ANY JEEP TO YOUR PREFERENCE. GIVE US A CALL @ 972-242-5350 OR STOP BY FOR A TEST DRIVE. 1724 LUNA RD IN CARROLLTON - 2 MILES NORTH OF 635.

Vehicle History Report : as Of 01/15/2025



Snapshot

2024 JEEP WRANGLER RUBICON 392



No accidents or damage reported to CARFAX



1 Service history record



CARFAX 1-Owner vehicle



Commercial vehicle



Last owned in Colorado



32 Last reported odometer reading



FREE CARFAX Report

See the full CARFAX Report for additional information

*carfax Snapshot is a reflection of available information on the date the report was pulled. carfax is constantly being updated with new information and is subject to change at any time.

Installed Options

Interior

- Air filtration- Front air conditioning: automatic climate control- Rear vents: second row
- Floor mat material: carpet- Floor mats: front- Heated steering wheel
- Parking brake trim: leather- Shift knob trim: leather- Steering wheel trim: leatherette
- Adaptive cruise control- Adaptive stop and go cruise control: semi-automatic
- Ambient lighting- Cargo area light- Footwell lights- Power outlet(s): 115V rear
- Power steering: variable/speed-proportional- Push-button start
- Rearview mirror: auto-dimming- Remote engine start- Steering wheel: tilt and telescopic
- Tool kit- Universal remote transmitter: Homelink - garage door opener - Clock
- Compass- Customizable instrument cluster- Digital odometer
- External temperature display- Instrument cluster screen size: 7 in.
- Multi-function display- Trip odometer- Driver seat: heated
- Driver seat power adjustments: 12- Front seat type: bucket- Passenger seat: heated
- Passenger seat power adjustments: 12- Rear seat folding: split
- Rear seat type: 60-40 split bench - Upholstery: leather-trimmed

Exterior

- Hood scoop- Running boards- Daytime running lights: LED
- Exterior entry lights: approach lamps- Front fog lights: LED- Taillights: LED
- Side mirrors: heated- Removable roof: hard top- Spare tire size: full-size matching
- Spare wheel type: aluminum alloy- Tire Pressure Monitoring System
- Wheels: painted aluminum alloy- Front wipers: variable intermittent
- Laminated glass: acoustic windshield- Liftgate window: manual flip-up
- Power windows: safety reverse- Rear wiper: intermittent- Solar-tinted glass: front
- Tinted glass: windshield- Window defogger: rear

Option Packages

Factory Installed Packages

Earl Clear Coat Paint	\$595
-----------------------	-------

Quick Order Package 27X	
Includes vehicle with standard equipment, 6.4L V8 HEMI engine, and 8-speed automatic transmission.	

Option Packages Total	\$595
-----------------------	-------

Texas Vehicle Exchange

Texas Vehicle Exchange

View this car on our website at tveauto.com/7338971

Website: tveauto.com

Phone: [972-242-5350](tel:972-242-5350)

Map: [1724 Luna Road, Carrollton, TX 75006](#)

