



2008 BMW 5 Series 528xi

BUY IT NOW \$3,500

View this vehicle on our website at orlandpublicautoauction.com

Orland Public Auto Auction

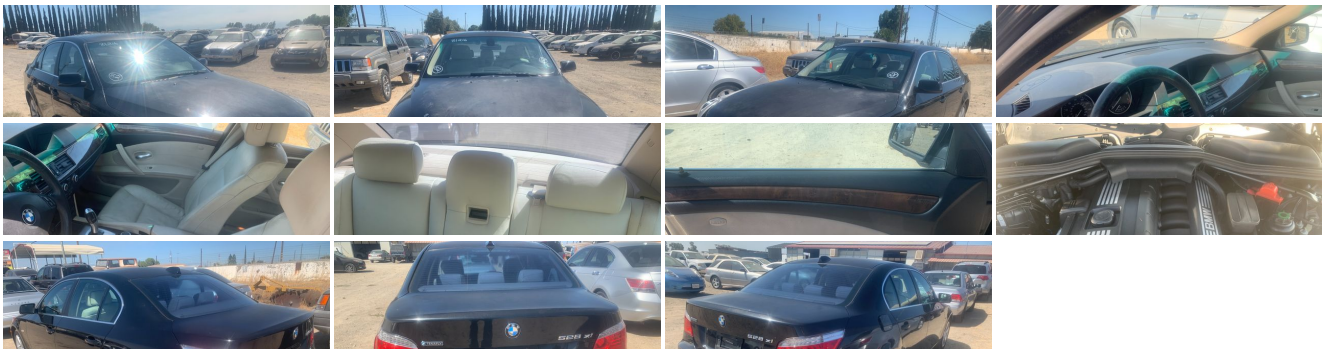
(530) 865-3900

3825 Co Rd 99W , Orland, CA 95963

Photos

Details

Contact



Specifications:

Year:	2008
VIN:	WBANV135X8CZ59207
Make:	BMW

Stock:	key 82
Model/Trim:	5 Series 528xi
Condition:	Pre-Owned
Body:	Sedan
Exterior:	Black
Engine:	3.0L I6 230hp 200ft. lbs.
Interior:	Black Leatherette
Transmission:	6-Speed Steptronic Automatic with Sport and Manual Shift and ATC
Mileage:	189,397
Drivetrain:	All Wheel Drive
Economy:	City 17 / Highway 25

Vehicle Description

WE WILL BE SELLING CARS DAILY 9AM TO 3PM. (((IF IT'S ON OUR WEBSITE IT'S STILL AVAILABLE))) . Face covering is mandatory. All you need is to be 18yrs old with a Ca. licence or ID with CA address. We accept Cash and Credit Cards. PRICE doesn't include tax, smog, doc, and registration fee's. See arriving inventory @ <http://orlandpublicautoauction.com> Located @ 3825 County Rd.99w ORLAND CA. Any questions please call us at 530-865-3900. Thank you.

Up to 300 cars, trucks, suv's, mini vans, RV's, and more. Free to preview, Free to enter.

We offer Smogged CLEAN title vehicles(We do all DMV, fee's apply), Salvage running drivable vehicles, and salvaged NON running vehicles. See arriving inventory on our website.

www.orlandpublicautoauction.com <http://www.facebook.com/orlandautoauction>

Orland Public Auto Auction
3825 County Road 99W
Orland, Calif. 95963 530-865-3900

Installed Options

Interior

- Air filtration: active charcoal- Front air conditioning: automatic climate control
- Front air conditioning zones: dual - Interior accents: wood- Steering wheel trim: leather
- Cruise control- Easy entry: power steering wheel- Memorized settings: driver seat
- Multi-function remote: keyless entry- Power outlet(s): 12V cargo area
- Power steering: variable/speed-proportional- Push-button start
- Steering wheel: power tilt and telescopic- External temperature display- Trip odometer
- Driver seat power adjustments: 10- Front headrests: power adjustable
- Front seat type: bucket - Passenger seat power adjustments: 10
- Rear seat type: bench - Upholstery: leatherette

Exterior

- Mirror color: body-color- Daytime running lights- Exterior entry lights: approach lamps
- Front fog lights- Taillights: adaptive- Side mirror adjustments: power
- Side mirrors: driver side only heated- Tire Pressure Monitoring System
- Front wipers: rain sensing- Window defogger: rear

We apologize for any inconvenience, but we do not offer any financing. All sales are cash, debit or credit only. No personal checks or cashier checks.

Orland Public Auto Auction

Orland Public Auto Auction

View this car on our website at orlandpublicautoauction.com/7335988

Website: orlandpublicautoauction.com

Phone: (530) 865-3900

Map: [3825 Co Rd 99W, Orland, CA 95963](#)

