



2015 Acura MDX SH-AWD

Our Price \$13,995

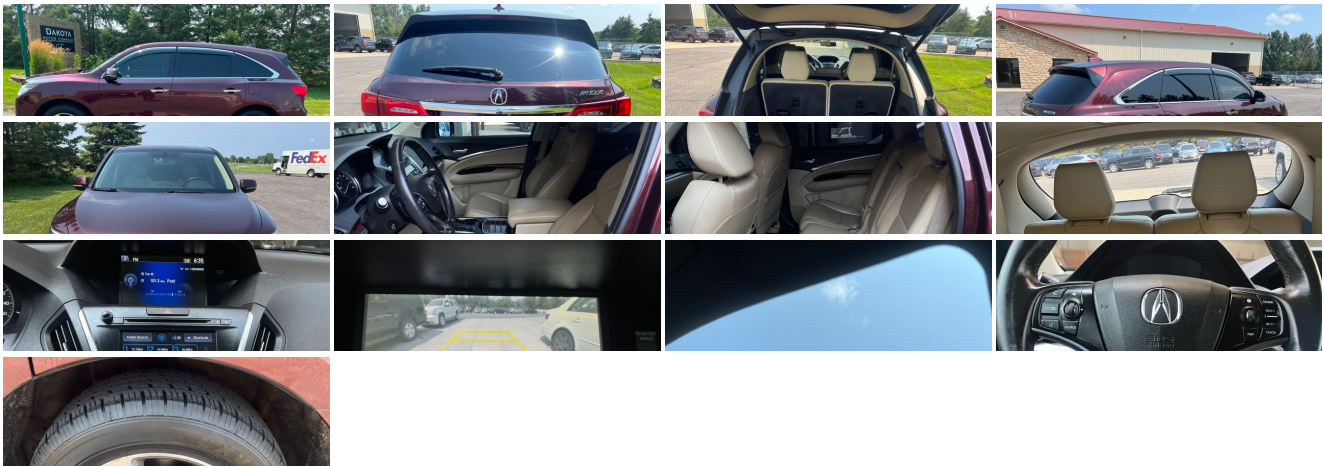
View this vehicle on our website at dakotamotor.com



(651) 460-6655

22098 Canton Court , Farmington, MN 55024

Photos
Details
Contact



Specifications:

Year:	2015
VIN:	5FRYD4H25FB015557
Make:	Acura
Model/Trim:	MDX SH-AWD
Condition:	Pre-Owned
Body:	SUV
Exterior:	[RX] Dark Cherry Pearl
Engine:	3.5L V6 290hp 267ft. lbs.
Interior:	Gray Leather
Transmission:	6-Speed Shiftable Automatic
Mileage:	130,334
Drivetrain:	All Wheel Drive
Economy:	City 18 / Highway 27

Vehicle Description

LEATHER!!MOONROOF!!THIRD ROW SEATING!!ALL WHEEL DRIVE!!CALL 651-460-6655

Check out our full line of inventory at DAKOTAMOTOR.COM

Call us anytime and ask for Bart or David and we will be happy to assist you. For your convenience please call before you come to be certain of availability. Full financing available. All of our vehicles have been checked by our in house service department. All of our vehicles are clean title and have actual miles. Enjoy our low overhead low price philosophy. We buy in bulk and sell at wholesale cost to save you the new car store markup!! 30years in wholesaling makes us retailing's smartest choice for a price savvy saver.

****Discover Luxury and Performance with the 2015 Acura MDX SH-AWD****

Are you ready to elevate your driving experience? Introducing the 2015 Acura MDX SH-AWD, a luxurious SUV that blends performance, comfort, and reliability into one stunning package. With an impressive pedigree of awards and accolades, this is the vehicle that will make every journey extraordinary.

****Striking Exterior and Elegant Interior****

The first thing you'll notice about this MDX is its captivating burgundy exterior. This rich, deep hue exudes sophistication and class, ensuring you'll turn heads wherever you go. Complementing this striking exterior is a plush gray leather interior that offers an inviting and serene environment for both driver and passengers. The high-quality leather seats are not only incredibly comfortable but also add a touch of elegance to the vehicle's overall aesthetic.

****Powerful Performance****

Under the hood, the 2015 Acura MDX SH-AWD boasts a robust 3.5L V6 engine that delivers an exhilarating 290 horsepower and 267 ft. lbs. of torque. This powerful engine ensures that you have all the muscle you need for both city driving and highway cruising. Paired with a 6-speed shifttable automatic transmission, this SUV offers smooth and responsive handling, making every drive a pleasure.

****Advanced All-Wheel Drive****

One of the standout features of this MDX is its Super Handling All-Wheel Drive (SH-AWD) system. This advanced technology provides superior control and stability, especially in challenging driving conditions. Whether you're navigating through rain-soaked streets or tackling snow-covered roads, the SH-AWD system ensures you and your passengers remain safe and in control.

****Award-Winning Excellence****

The 2015 Acura MDX SH-AWD isn't just another SUV; it's a recipient of numerous prestigious awards that speak volumes about its quality and value. It has been honored with Edmunds's Best Retained Value: Luxury Brand and Edmunds's Best Retained Value: Honorable Mention. Additionally, it has been recognized as one of Edmunds's Top Rated SUVs and Top Recommended SUVs, as well as Kelley Blue Book's Best Buy: Luxury SUV. These accolades highlight the MDX's exceptional build quality, reliability, and overall value, giving you confidence in your investment.

****Mileage and Reliability****

With 130,334 miles on the odometer, this 2015 Acura MDX SH-AWD has proven its durability and reliability. Acura is renowned for building vehicles that stand the test of time, and this MDX is no exception. You can rest assured that this SUV is ready to provide many more miles of enjoyable and dependable driving.

****Why Choose the 2015 Acura MDX SH-AWD?***

- **Luxurious Comfort:** Enjoy the premium gray leather seats and spacious interior that make every trip a delight.
- **Power and Performance:** Experience the thrill of the 3.5L V6 engine and the precision of the 6-speed shifttable automatic transmission.
- **Advanced Technology:** Benefit from the superior control of the SH-AWD system, ensuring safety and stability in all conditions.
- **Proven Excellence:** Drive with confidence knowing your vehicle is backed by multiple industry awards and accolades.
- **Long-Term Value:** Trust in Acura's reputation for reliability and high retained value.

Don't miss your chance to own this exceptional 2015 Acura MDX SH-AWD. It's the perfect blend of luxury, performance, and reliability, ready to enhance your driving experience. Contact us today to schedule a test drive and experience this remarkable SUV for yourself!

Installed Options

Interior

- Air filtration- Front air conditioning: automatic climate control
- Front air conditioning zones: dual - Humidity/dewpoint sensors
- Rear air conditioning: automatic climate control
- Armrests: rear center folding with storage- Dash trim: alloy- Door sill trim: aluminum
- Door trim: leather- Floor mat material: carpet- Floor mats: front
- Interior accents: metallic/woodgrain- Shift knob trim: leather
- Steering wheel trim: leather- Ambient lighting- Cargo area light- Cruise control
- Easy entry: power rear seat- Footwell lights- Memorized settings: 2 driver
- Multi-function remote: proximity entry system- Power outlet(s): 12V cargo area
- Power steering- Push-button start- Rearview mirror: auto-dimming
- Steering wheel: power tilt and telescopic
- Universal remote transmitter: Homelink - garage door opener - Clock- Compass
- Digital odometer- External temperature display- Multi-function display- Trip odometer
- Driver seat: heated- Driver seat power adjustments: 10- Front seat type: sport bucket
- Passenger seat: heated- Passenger seat power adjustments: 8
- Rear seat folding: power- Rear seat type: 60-40 split bench - Third row seat folding
- Third row seat type: 50-50 split bench - Upholstery: leather-trimmed

Exterior

- Door handle color: chrome- Exhaust: dual tip- Front bumper color: body-color
- Mirror color: body-color- Rear spoiler: roofline- Daytime running lights: LED
- Taillights: LED- Side mirror adjustments: power- Side mirrors: heated
- Spare wheel type: steel- Tire Pressure Monitoring System- Wheels: aluminum alloy
- Front wipers: speed sensitive- Laminated glass: acoustic windshield
- Rear privacy glass- Rear wiper: intermittent- Window defogger: rear

Dakota Motor Company

Dakota Motor Company

View this car on our website at dakotamotor.com/7332500

Website: dakotamotor.com

Phone: (651) 460-6655

Map: [22098 Canton Court, Farmington, MN 55024](#)

