

## 2018 Ram 2500 Laramie Crewcab 4x4 6.7L

View this car on our website at [certifiedautoplaaza.com/7330938/ebrochure](http://certifiedautoplaaza.com/7330938/ebrochure)



Our Price **\$31,995**

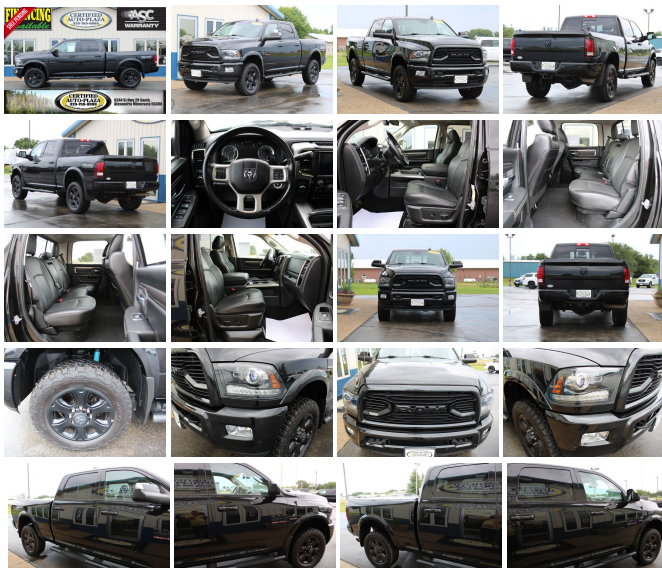
Retail Value **\$37,625**

### Specifications:

<b>Year:</b>	2018
<b>VIN:</b>	3C6UR5FL4JG192095
<b>Make:</b>	Ram
<b>Stock:</b>	192095
<b>Model/Trim:</b>	2500 Laramie Crewcab 4x4 6.7L
<b>Condition:</b>	Pre-Owned
<b>Body:</b>	Pickup Truck
<b>Exterior:</b>	[PXR] Brilliant Black Crystal Pearl Coat
<b>Engine:</b>	Cummins 6.7L Diesel Turbo I6 350hp 660ft. lbs.
<b>Interior:</b>	Black Leather
<b>Transmission:</b>	6-Speed Shiftable Automatic
<b>Mileage:</b>	167,659
<b>Drivetrain:</b>	4 Wheel Drive

CREW CAB—4X4—LARAMIE PACKAGE—CONVENIENCE PACKAGE—OFF ROAD PACKAGE—SPORT APPEARANCE PACKAGE—HEAVY DUTY SNOW PLOW PREP PACKAGE—6.7L CUMMINS TURBO DIESEL I6 ENGINE—6-SPEED AUTOMATIC TRANSMISSION—BRILLIANT BLACK CRYSTAL PEARL COAT EXTERIOR—BLACK LEATHER INTERIOR—POWER ADJUSTABLE PEDALS—POWER ADJUSTABLE FRONT SEATS—HEATED AND VENTED FRONT SEATS—HEATED REAR SEAT—HEATED STEERING WHEEL—DUAL-ZONE AUTOMATIC CLIMATE CONTROLS—AM/FM RADIO WITH SATELLITE CAPABILITY—UCONNECT WITH 8.4" TOUCHSCREEN—BLUETOOTH—ANDROID AUTO—APPLE CARPLAY—NAVIGATION—USB/AUX INPUTS—STEERING WHEEL MOUNTED AUDIO CONTROLS—BACKUP CAMERA—REMOTE KEYLESS ENTRY—FACTORY REMOTE START—POWER MOONROOF—POWER REAR SLIDING WINDOW—RUNNING BOARDS—TRAILER TOW MIRRORS—5TH WHEEL/GOOSENECK PREP—TRAILER TOW PACKAGE—INTEGRATED TRAILER BRAKE CONTROLLER—ANTISPIN REAR DIFFERENTIAL—FOG LIGHTS—FRONT TOW HOOKS—TONNEAU COVER—LED BED LIGHTING—20" BLACK ALLOY WHEELS—BF GOODRICH TIRES—EXCELLENT CONDITION!!

Prepare to be captivated by the sheer power, luxury, and dependability of the stunning 2018 Ram 2500 Laramie Crewcab 4x4, a truck that stands head and shoulders above the competition. Cloaked in a sleek, commanding black exterior, this magnificent machine exudes an aura of sophistication and strength that is sure to turn heads wherever you go. Step inside, and you'll be greeted by an opulent black leather interior



that promises comfort and style in equal measure.

Under the hood, the heart of this beast roars with the legendary Cummins 6.7L Diesel Turbo I6 engine, delivering a jaw-dropping 350 horsepower and a mighty 660 ft. lbs. of torque. Whether you're towing heavy loads, conquering rugged terrains, or cruising down the highway, this powerhouse ensures you have all the muscle you need to get the job done with ease and confidence. The 6-speed shifttable automatic transmission offers smooth, seamless shifts, giving you the perfect blend of control and convenience.

This 2018 Ram 2500 Laramie Crewcab 4x4 isn't just about raw power; it's also packed with premium features and cutting-edge technology. The luxurious black leather seats are meticulously crafted for maximum comfort, providing the perfect environment for long drives or daily commutes. The spacious crew cab ensures that you and your passengers have plenty of room to stretch out and enjoy the ride.

When it comes to dependability, the 2018 Ram 2500 Laramie Crewcab 4x4 truly shines. It's no surprise that this exceptional vehicle has earned an Honorable Mention in Edmunds's Best Retained Value awards, a testament to its long-term value and durability. Additionally, it has been recognized as one of the top models in J.D. Power and Associates's Vehicle Dependability Study (VDS), giving you peace of mind that this truck is built to last and perform reliably year after year.

The exterior of this Ram 2500 Laramie is as functional as it is attractive. The bold black paintwork is complemented by striking chrome accents, creating a look that is both rugged and refined. The robust 4x4 capability ensures that you can tackle any terrain with confidence, whether you're navigating city streets or exploring off-road trails.

Safety is paramount in the 2018 Ram 2500 Laramie Crewcab 4x4. With a suite of advanced safety features, you can drive with confidence knowing that you and your passengers are protected. From its solid construction to its state-of-the-art safety systems, this truck is designed to keep you safe on every journey.

In summary, the 2018 Ram 2500 Laramie Crewcab 4x4 with its Cummins 6.7L Diesel Turbo I6 engine is a remarkable blend of power, luxury, and dependability. Its award-winning credentials and premium features make it an outstanding choice for anyone seeking a truck that can handle the toughest tasks while providing a comfortable and stylish ride. Don't miss your chance to own this exceptional vehicle – it's ready and waiting to elevate your driving experience to new heights. Visit us today to experience the unparalleled excellence of the 2018 Ram 2500 Laramie Crewcab 4x4 for yourself!

---

2018 Ram 2500 Laramie Crewcab 4x4 6.7L

Certified Auto Plaza - 320-759-9999 - View this car on our website at [certifiedautoplaza.com/7330938/ebrochure](https://certifiedautoplaza.com/7330938/ebrochure)

**Vehicle History Report : as Of 09/08/2024**



**Snapshot**

**2018 RAM 2500 LARAMIE**



No accidents or damage reported to CARFAX



**11** Service history records



At least 1 open recall



**2** Previous owners



Types of owners: Corporate fleet, Personal



**167,659** Last reported odometer reading

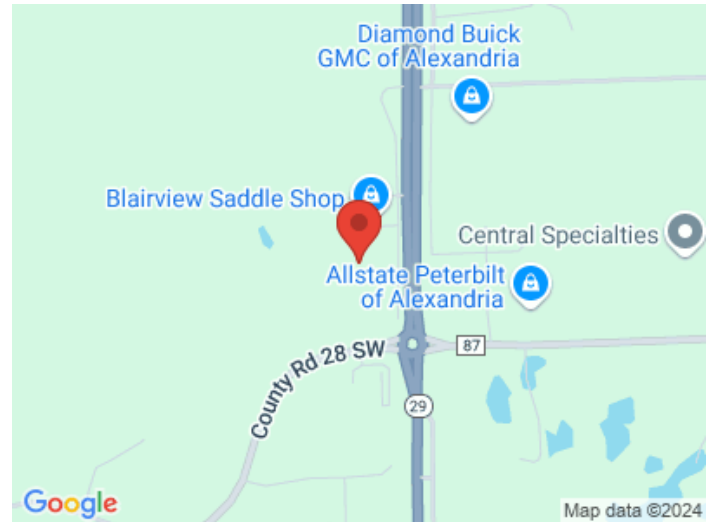


**FREE CARFAX Report**

See the full CARFAX Report for additional information

\*carfax Snapshot is a reflection of available information on the date the report was pulled. carfax is constantly being updated with new information and is subject to change at any time.

**Our Location :**



2018 Ram 2500 Laramie Crewcab 4x4 6.7L

Certified Auto Plaza - 320-759-9999 - View this car on our website at [certifiedautoplaaza.com/7330938/ebrochure](https://certifiedautoplaaza.com/7330938/ebrochure)

**Installed Options**

**Interior**

- Air filtration- Front air conditioning: automatic climate control
- Front air conditioning zones: dual- Dash trim: simulated wood- Door trim: simulated wood
- Floor mat material: carpet- Floor mats: front- Heated steering wheel
- Shift knob trim: chrome- Steering wheel trim: leather- Ambient lighting- Cruise control
- Memorized settings: 2 driver- Multi-function remote: keyless entry
- Power outlet(s): 115V front- Power steering- Rearview mirror: auto-dimming
- Universal remote transmitter: garage door opener- Clock- Compass
- Customizable instrument cluster- Digital odometer- External temperature display
- Instrument cluster screen size: 7 in.- Multi-function display- Powertrain hour meter
- Trip odometer- Driver seat: heated- Driver seat power adjustments: 10
- Front seat type: 40-20-40 split bench - Passenger seat: heated
- Passenger seat power adjustments: 6- Rear seat folding: folds up
- Rear seat type: 60-40 split bench - Upholstery: leather-trimmed

**Exterior**

- Door handle color: chrome- Front bumper color: chrome- Mirror color: chrome
- Pickup bed light- Tailgate: power locking- Exterior entry lights: puddle lamps

**Option Packages**

**Factory Installed Packages**

20 x 8 In. Black Painted Aluminum Wheels	\$395
LED Bed Lighting	\$165
Power Black Folding Trailer Tow Mirrors w/Memory	\$195
Power Sunroof	\$1,095
Rear Window Defroster	\$195

- Front fog lights- Taillights: LED- Side mirror adjustments: power
- Side mirrors: auto-dimming- Spare wheel type: steel- Tire Pressure Monitoring System
- Wheels: polished aluminum alloy- Front wipers: variable intermittent
- Pickup sliding rear window: power horizontal- Power windows: safety reverse
- Rear privacy glass- Solar-tinted glass

<b>Keyless Go</b> Includes remote proximity keyless entry.	<b>\$295</b>
<b>Leather Trimmed Sport Bucket Seats</b> Includes front heated and ventilated leather trimmed high back bucket seats, 10-way power adjustable drivers seat with memory settings, 6-way power adjustable passengers seat, power adjustable lumbar control, rear heated 60/40 split folding seat, full length floor console, folding flat load floor storage, and 115V auxiliary power outlet.	<b>\$545</b>
<b>Power Adjustable Pedals w/Memory</b>	<b>\$195</b>
<b>Remote Start System</b>	<b>\$295</b>
<b>Convenience Group</b> Includes automatic high beam headlamp control and rain sensitive wipers.	<b>\$395</b>
<b>Heavy Duty Snow Plow Prep Group</b> Includes transfer case skid plate shield and 180 amp alternator with gas engine or 220 amp alternator with diesel engine.	<b>\$195</b>
<b>Laramie Quick Order Package 2FH</b> Includes vehicle with standard equipment, Cummins 6.7L I6 turbo diesel engine rated at 370hp @ 2,800 rpm and 800 ft. lbs. of torque at 1600 rpm, Cummins turbo diesel badge, 5.5 additional gallons of diesel, diesel exhaust brake, current generation engine controller, electronically controlled throttle, selective catalytic reduction, front bumper site shields, RAM active air, 180 amp alternator, GVW rating of 10,000 lbs., tow hooks, 6-speed automatic transmission, 3.42 axle ratio, tip start, and transmission oil cooler.	
<b>Off Road Package</b> Includes performance tuned shocks, hill descent control, transfer case skid plate, front tow hooks, body color fender flares and neutral grey offroad decal.	<b>\$495</b>
<b>Sport Appearance Group</b> Includes 20 x 8.0 inch black painted aluminum wheels, black wheel center hubs, LT285/60R20E OWL on/off road tires, flat black badges, black bi-function projector headlamps, body color door handles, body color grille, black Ram head tailgate badge, painted front and rear bumpers, monotone paint, power folding and power adjustable black exterior mirrors, heated and ventilated leather trimmed 40/20/40 front bench seat, power adjustable lumbar control, front center seat cushion storage, rear 60/40 split folding seat, folding flat load floor storage, and front armrest with cupholders.	<b>\$2,095</b>
<b>UConnect 4C Nav with 8.4 In. Display</b> Includes 8.4 inch touch screen display, Apple CarPlay, Android Auto, AM/FM radio, HD radio, integrated voice command with Bluetooth, media hub with USB and auxiliary audio inputs, GPS navigation, SiriusXM satellite radio with Traffic Plus, Travel Link and Guardian, and rearview auto-dimming mirror with microphone.	<b>\$745</b>
<b>5th Wheel/Gooseneck Towing Prep</b>	<b>\$495</b>
<b>Anti-Spin Rear Differential</b>	<b>\$445</b>

