

# 2019 Ford F-250 Super Duty XL 4x4

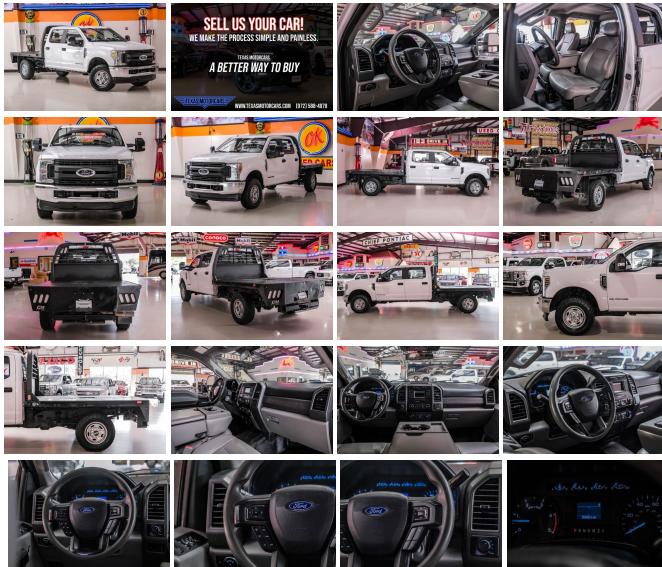
View this car on our website at [mrcarguys.com/7327939/ebrochure](http://mrcarguys.com/7327939/ebrochure)



Our Price **\$39,988**

## Specifications:

<b>Year:</b>	2019
<b>VIN:</b>	1FD7W2BTXKEE14419
<b>Make:</b>	Ford
<b>Stock:</b>	E14419
<b>Model/Trim:</b>	F-250 Super Duty XL 4x4
<b>Condition:</b>	Pre-Owned
<b>Body:</b>	Pickup Truck
<b>Exterior:</b>	[Z1] Oxford White
<b>Engine:</b>	Power Stroke 6.7L Biodiesel Turbo V8 450hp 935ft. lbs.
<b>Interior:</b>	Medium Earth Gray Vinyl
<b>Transmission:</b>	6-Speed Shiftable Automatic
<b>Mileage:</b>	100,661
<b>Drivetrain:</b>	4 Wheel Drive

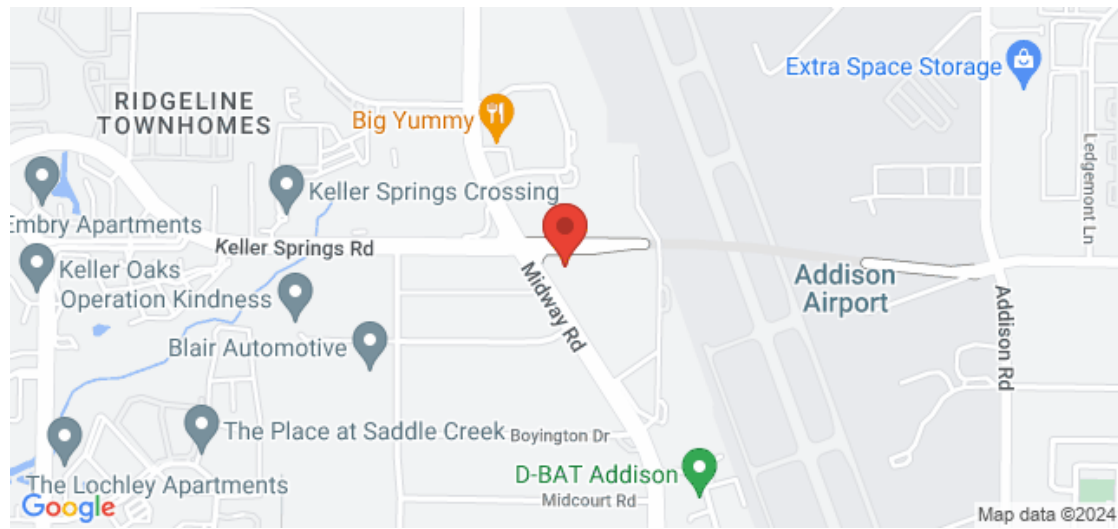


2019 Ford F-250 Super Duty XL 4x4 The ultimate blend of power, durability, and modern convenience lies within the 2019 Ford F-250 Super Duty XL 4x4. Painted in a timeless white, this commanding truck is not just a vehicle; it's a statement of strength and reliability. Under the hood, the beastly Power Stroke 6.7L Biodiesel Turbo V8 engine roars with 450 horsepower and a staggering 935 ft. lbs. of torque, ensuring you have all the muscle you need for any task. The Power Equipment Group adds a host of conveniences, including power door locks, power tailgate lock, remote keyless entry, and power front and second-row windows. The manually telescoping two-way folding trailer tow mirrors with power and heated glass, along with heated convex spotter mirrors and integrated clearance lamps and turn signals, provide unmatched visibility and safety. The XL Value Package has this truck ready to rock. It includes the SYNC enhanced voice recognition communications and entertainment system, complete with a 4.2-inch LCD display, AppLink, and a smart charging USB port. Cruise control with steering wheel-mounted controls ensures a relaxed and enjoyable drive, while the chrome front and rear step bumpers and bright chrome center hub covers add a touch of class to this rugged powerhouse. Towing has never been easier, thanks to the Trailer Brake Controller, which includes the TowCommand integrated trailer brake controller and a smart trailer tow connector. This system is compatible with select electric over hydraulic brakes, making it easy to haul your trailer with confidence. The rearview camera system provides security, ensuring you can maneuver with precision even in the tightest of spots. The 2019 Ford F-250 Super Duty XL 4x4 is ready to take on any challenge you throw its way ??? are you ready to join the adventure? This vehicle has been reduced at below wholesale prices. READY for work and play! Give us a call today! Can't make it in? We offer shipping all over the

2019 Ford F-250 Super Duty XL 4x4

Mr Car Guys - 214-732-7859 - View this car on our website at [mrcarguys.com/7327939/ebrochure](http://mrcarguys.com/7327939/ebrochure)

### Our Location :



2019 Ford F-250 Super Duty XL 4x4

Mr Car Guys - 214-732-7859 - View this car on our website at [mrcarguys.com/7327939/ebrochure](http://mrcarguys.com/7327939/ebrochure)

## Installed Options

### Interior

- Air filtration- Front air conditioning- Power outlet(s): 12V front- Power steering
- Steering wheel: tilt and telescopic- Clock- Digital odometer- External temperature display
- Powertrain hour meter- Front seat type: 40-20-40 split bench - Rear seat folding: folds up
- Rear seat type: 60-40 split bench

### Exterior

- Pickup bed light- Tailgate: lift assist- Towing mirrors- Spare wheel type: steel
- Tire Pressure Monitoring System- Front wipers: variable intermittent
- Solar-tinted glass: front

Mr Car Guys

[mrcarguys.com](http://mrcarguys.com)

214-732-7859

16000 Midway Rd.

Addison, TX 75001

© 2024 AutoRevo - All rights reserved. - Powered by AutoRevo