

2008 Chevrolet Silverado 1500 LT1

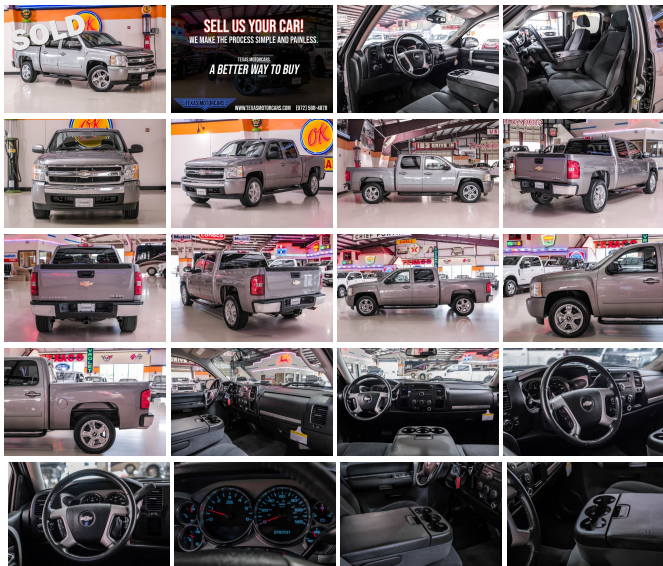
View this car on our website at texasmotorcars.com/7327878/ebrochure



Our Price **\$16,982**

Specifications:

| | |
|----------------------|---|
| Year: | 2008 |
| VIN: | 3GCEC13JX8G207767 |
| Make: | Chevrolet |
| Stock: | 207767 |
| Model/Trim: | Silverado 1500 LT1 |
| Condition: | Pre-Owned |
| Body: | Pickup Truck |
| Exterior: | [9V9] Doeskin Tan |
| Engine: | Vortec Iron Block 5.3L V8 315hp 338ft. lbs. |
| Interior: | Ebony Cloth |
| Transmission: | 4-Speed Automatic |
| Mileage: | 87,911 |
| Drivetrain: | Rear Wheel Drive |
| Economy: | City 15 / Highway 20 |



2008 Chevrolet Silverado 1500 LT1

Behold the epitome of reliability, the 2008 Chevrolet Silverado 1500 LT1, a truck that combines rugged durability with refined sophistication. Under the hood, you'll find the potent Vortec Iron Block 5.3L V8 engine, delivering a robust 315 horsepower and 338 lb-ft of torque. This powerhouse ensures that you have all the muscle you need for towing, hauling, and everyday driving. Paired with a smooth 4-speed automatic transmission, this Silverado offers a driving experience that is both powerful and effortless.

Step inside and be greeted by a spacious black cloth interior that exudes comfort and practicality. The leather-trimmed steering wheel adds a touch of luxury, while the auto-dimming rearview mirror and cruise control enhance your driving convenience. With SiriusXM satellite radio and a six-speaker sound system, your favorite tunes will sound crystal clear, making every journey more enjoyable.

This Silverado comes loaded with the highly sought-after "Power Pack Plus" and "Texas Edition" packages. The Power Pack Plus includes heavy-duty trailering equipment, an automatic locking rear differential, and custom aluminum wheels, ensuring you're ready for any task. The Texas Edition takes it a step further with 20" machined aluminum wheels, power-adjustable and folding mirrors, a cargo management system, and exclusive Texas emblem badging, adding a touch of Lone Star pride.

This Silverado delivers safety and reliability with features like 4-wheel ABS, daytime running lights, and OnStar satellite communications. The 3.42 rear axle ratio ensures optimal performance and efficiency.

One rear axle rate ensures optimal performance and efficiency, whether you're cruising on the highway or navigating tough terrain.

With its low mileage, award-winning design, and powerful performance, the 2008 Chevrolet Silverado 1500 LT1 is the perfect blend of strength and sophistication. Don't sit on your hands! Come get what should be yours!

This vehicle has been reduced at below wholesale prices.

READY for work and play! Give us a call today!

Can't make it in? We offer shipping all over the United States. Ask your salesperson for shipping quotes.

Financing is available with competitive rates! Get pre-approved in no time by filling out a credit application on the finance section of our website! We also offer industry leading, highly rated warranty options so you can select one perfect for your specific vehicle needs.

All vehicles are priced for QUICK SALE. Call us today to see how easy it is to buy a vehicle at Texas Motorcars.

Texas Motorcars in Addison is a family owned and operated business. We are committed to delivering the best possible service!

Se habla Español!

Texas Motorcars "A Better Way To Buy!"

2008 Chevrolet Silverado 1500 LT1

Texas Motorcars - 2146767311 - View this car on our website at texasmotorcars.com/7327878/ebrochure

Vehicle History Report : as Of 09/08/2024

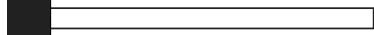


Snapshot

2008 CHEVROLET SILVERADO 1500 LT1



Accident reported: very minor damage



MINOR MODERATE SEVERE



12 Service history records



4 Previous owners



Personal vehicle



87,948 Last reported odometer reading



FREE CARFAX Report

See the full CARFAX Report for additional information

*carfax Snapshot is a reflection of available information on the date the report was pulled. carfax is constantly being updated with new information and is subject to change at any time.

Our Location :



2008 Chevrolet Silverado 1500 LT1

Texas Motorcars - 2146767311 - View this car on our website at texasmotorcars.com/7327878/ebrochure

Installed Options

Interior

- Front air conditioning- Floor mat material: rubber/vinyl- Steering wheel trim: leather
- Cruise control- Multi-function remote: keyless entry- Power outlet(s): two 12V front
- Power steering- Rearview mirror: auto-dimming- Compass- External temperature display
- Multi-function display- Trip odometer- Front seat type: 40-20-40 split bench
- Upholstery: cloth

Exterior

- Front bumper color: chrome- Pickup bed light- Daytime running lights
- Spare wheel type: steel- Tire Pressure Monitoring System
- Front wipers: variable intermittent- Solar-tinted glass- Window defogger: rear

Option Packages

Factory Installed Packages

["Power Pack Plus", "Includes LY5, LH6, LC9 or LMG engine, heavy duty automatic locking rear differential, heavy-duty trailering equipment and 4- 17" x 7.5" 6-lug custom aluminum wheels. Not available with PDA, PEB or PCL. Price reflects Power Pack Plus Discount (-537.50 invoice, -650 MSRP)."]

\$875

["Texas Edition", "Includes Vortec 5.3L (LY5) engine, 4- 20" x 8.5" 5-spoked machined aluminum wheels, outside heated power-adjustable, power folding body-colored mirrors, heavy duty trailering equipment, heavy duty automatic locking rear differential, cargo management system and Texas emblem badging. Can upgrade engine to LMG. Not available with L76 or LY2. Requires delivery to residents of TX, OK, LA and select counties in New Mexico, Arkansas and Kansas."]

["3.42 Rear Axle Ratio"]

Option Packages Total

\$875

Texas Motorcars

texasmotorcars.com

2146767311

16000 Midway Rd

Addison, Texas 75001

© 2024 AutoRevo - All rights reserved. - Powered by AutoRevo