

2019 Ford F-250 Super Duty King Ranch 4x4

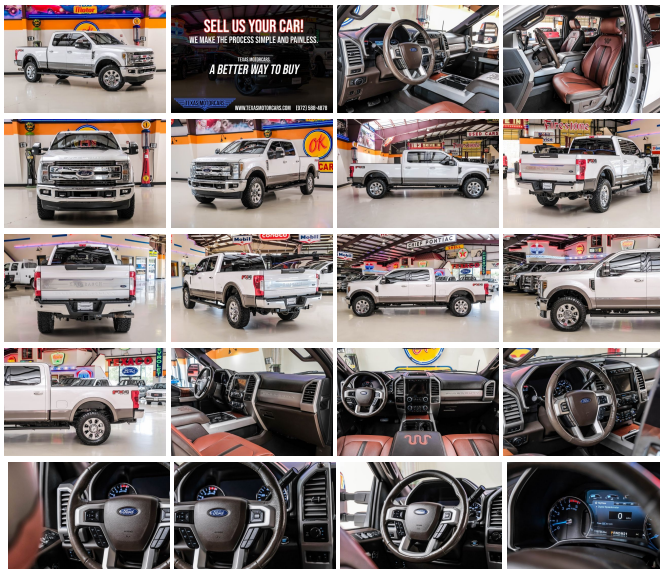
View this car on our website at mrcarguys.com/7326647/ebrochure



Our Price **\$49,988**

Specifications:

Year:	2019
VIN:	1FT7W2BT2KEC88139
Make:	Ford
Stock:	C88139
Model/Trim:	F-250 Super Duty King Ranch 4x4
Condition:	Pre-Owned
Body:	Pickup Truck
Exterior:	[UG] White Platinum Metallic Tri-Coat
Engine:	Power Stroke 6.7L Biodiesel Turbo V8 450hp 935ft. lbs.
Interior:	Java Leather
Transmission:	6-Speed Shifttable Automatic
Mileage:	119,735
Drivetrain:	4 Wheel Drive

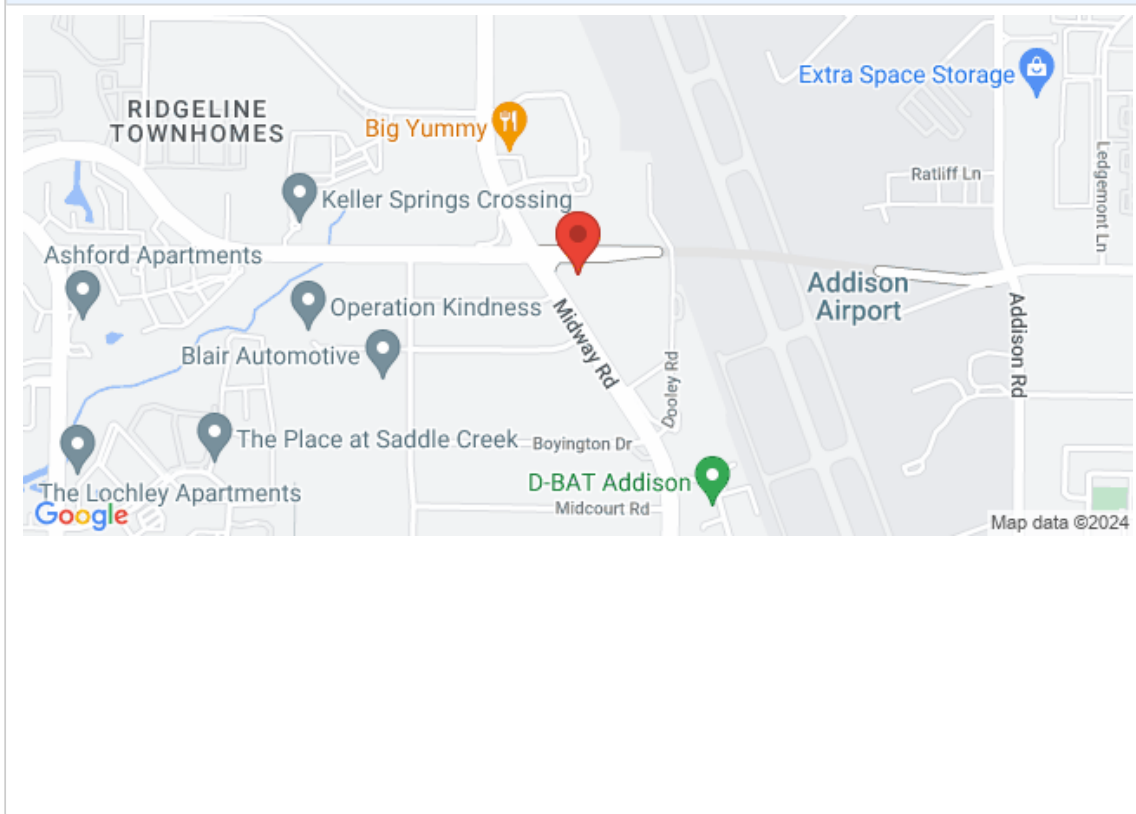


2019 Ford F-250 Super Duty King Ranch 4x4 Prepare to be amazed by the 2019 Ford F-250 Super Duty King Ranch 4x4, a truck that redefines power, luxury, and capability. This impressive machine is looks the part with a refined two tone exterior. The formidable Power Stroke 6.7L Biodiesel Turbo V8 engine is one for the ages, putting out crazy torque and horsepower setting up this truck to be a monster workhorse. The 20 In. Chrome Aluminum Wheels not only add a touch of flair but also provide superior durability and performance. The Power Deployable Running Boards are crucial for ease of access, while the Tailgate Step with Tailgate Assist and flip-up grab bar ensures that loading and unloading cargo is effortless. The Tough Bed Spray-In Bedliner is a standout feature, offering a robust shield against the most dangerous cargo. The bedliner includes a tailgate guard, black box bed tie-down hooks, and black bed attachment bolts, ensuring your truck bed remains pristine and functional. Adventure seekers will appreciate the FX4 Off-Road Package, which equips the truck with hill descent control, transfer case and fuel tank skid plates and off-road tuned shocks This package ensures that no path is too challenging for your F-250. Towing lifers will be thrilled with the Gooseneck Hitch Kit and the High Capacity Trailer Tow Package, which significantly increases the Gross Combined Weight Rating (GCW) on the diesel engine from 23,500 lbs. to an impressive 25,700 lbs. This package also includes max front springs and an upgraded axle, making it easier than ever to tow heavy loads with confidence. The Blind Spot Information System w/Cross-Traffic Alert provides assurance by alerting you to vehicles in your blind spots, while the Rear CHMSL Camera ensures you have a clear view of what???'s behind you, making parking and reversing safer and more convenient. Inside, the Upfitter Switches located in the overhead console provide easy access to control additional accessories, making

2019 Ford F-250 Super Duty King Ranch 4x4

Mr Car Guys - 214-732-7859 - View this car on our website at mrcarguys.com/7326647/ebrochure

Our Location :



2019 Ford F-250 Super Duty King Ranch 4x4

Mr Car Guys - 214-732-7859 - View this car on our website at mrcarguys.com/7326647/ebrochure

Installed Options

Interior

- Air filtration- Power outlet(s): 12V front- Clock- Digital odometer
- External temperature display- Powertrain hour meter- Rear seat folding: folds up
- Rear seat type: 60-40 split bench

Exterior

- Tailgate: lift assist- Towing mirrors- Spare wheel type: steel
- Tire Pressure Monitoring System- Front wipers: variable intermittent
- Solar-tinted glass: front

Mr Car Guys

mrcarguys.com

214-732-7859

16000 Midway Rd.

Addison, TX 75001

© 2024 AutoRevo - All rights reserved. - Powered by AutoRevo