

2010 Toyota Tacoma DOUBLE CAB SR5 V6 4X4 - w/ 9 IN. BLUETOOTH TOUCH SCREEN, CHAOS FAB LIFT, CUSTOM MB WHEEL, ECT

Lance Janke 6198860546

View this car on our website at autocentersd.com/7323900/ebrochure



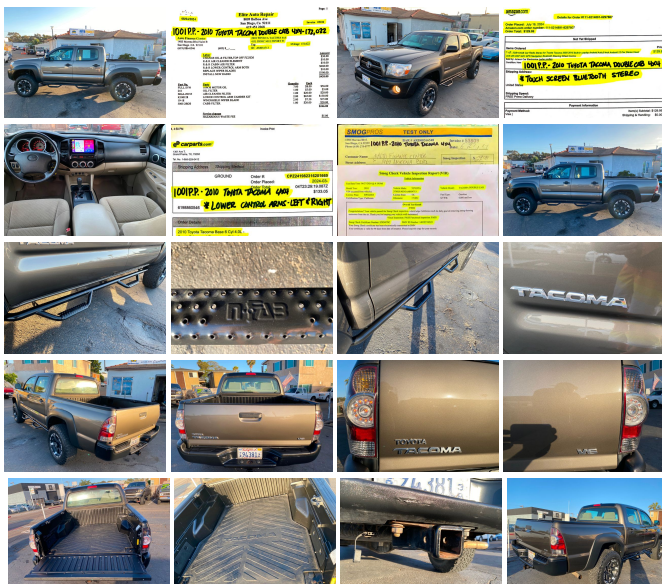
Our Price **\$18,995**

Other Dealers Price **\$20,995**

Specifications:

| | |
|----------------------|--|
| Year: | 2010 |
| VIN: | 3TMLU4EN3AM054713 |
| Make: | Toyota |
| Stock: | 1001P.P. |
| Model/Trim: | Tacoma DOUBLE CAB SR5 V6 4X4 - w/ 9 IN. BLUETOOTH TOUCH SCREEN, CHAOS FAB LIFT, CUSTOM MB WHEEL, ECT |
| Condition: | Pre-Owned |
| Body: | Pickup Truck |
| Exterior: | [4T3] Pyrite Mica |
| Engine: | 4.0L V6 236hp 266ft. lbs. |
| Interior: | Sand Beige Cloth |
| Transmission: | Automatic, 5-Spd w/Overdrive |
| Mileage: | 171,955 |
| Drivetrain: | 4 Wheel Drive |
| Economy: | City 14 / Highway 18 |

- **Mileage:** 171,955 miles
- **Color:** Stunning gold exterior with a comfortable tan cloth interior
- **Engine:** Powerful 4.0L V6 with 236hp and 266ft. lbs. of torque
- **Features:** Lifted, running boards, automatic 5-speed with overdrive
- **Warranty:** Covered by AUL CORP for added peace of mind



Step into the world of adventure and reliability with this stunning 2010 Toyota Tacoma DOUBLE CAB SR5 V6 4X4! This powerhouse on wheels, bathed in a striking gold exterior, is not just a truck; it's a statement of rugged elegance and unyielding performance. With a mileage of 171,955 miles, this Tacoma has proven its durability and is ready to conquer many more miles with you.

Under the hood, you'll find the heart of this beast – a robust 4.0L V6 engine that delivers an impressive 236 horsepower and 266 ft. lbs. of torque. This powerhouse is paired with an automatic 5-speed transmission with overdrive, ensuring smooth transitions and a driving experience that's both powerful and effortless. Whether you're

experience that's both powerful and smooth. Whether you're navigating city streets or tackling off-road trails, this Tacoma is equipped to handle it all with ease.

The lifted suspension and running boards not only enhance the truck's rugged appearance but also provide practical benefits. The lift gives you an elevated vantage point, improving visibility and making it easier to navigate rough terrains. The running boards ensure easy access to the cab, adding a touch of convenience and style.

Step inside, and you're greeted by a spacious and comfortable tan cloth interior that offers a welcoming retreat after a long day of driving. The double cab configuration provides ample room for passengers and cargo alike, making it perfect for both work and play. Whether you're heading out on a family adventure or hauling equipment to the job site, this Tacoma has the space and versatility to meet your needs.

One of the standout features of this Tacoma is its clean title, giving you the peace of mind that comes with knowing the vehicle's history is transparent and trustworthy. Additionally, this truck is backed by a warranty from AUL CORP, offering an extra layer of protection and confidence in your purchase.

This Tacoma isn't just about raw power and rugged good looks; it's also a smart investment. Recognized by Edmunds and Kelley Blue Book, this model has consistently been awarded for its fuel efficiency and resale value. It's no wonder it has been named among the Top 10 Most Fuel-Efficient Trucks, Top Recommended Trucks, and Best Resale Value in multiple categories. When you choose this Tacoma, you're not just getting a vehicle; you're getting a proven performer with a track record of excellence.

Don't miss out on the opportunity to own this exceptional 2010 Toyota Tacoma DOUBLE CAB SR5 V6 4X4. With its powerful engine, lifted stance, and comprehensive warranty, this truck is ready to take on any challenge you throw its way. Act fast and make this remarkable vehicle yours today – it's time to elevate your driving experience to new heights!

CALL LANCE TODAY AT 619-886-0546

Vehicle History Report : as Of 09/08/2024



Snapshot

2010 TOYOTA TACOMA V6



Minor to moderate damage



MINOR MODERATE SEVERE

40 Service history records



5 Previous owners



Personal vehicle



171,955 Last reported odometer reading



FREE CARFAX Report

See the full CARFAX Report for additional information

*carfax Snapshot is a reflection of available information on the date the report was pulled. carfax is constantly being updated with new information and is subject to change at any time.

Our Location :



2010 Toyota Tacoma DOUBLE CAB SR5 V6 4X4 - w/ 9 IN. BLUETOOTH TOUCH SCREEN, CHAOS FAB LIFT, CUSTOM MB WHEEL, ECT
Auto Finance Center - 6198860546 - View this car on our website at autocentersd.com/7323900/ebrochure

Installed Options

Exterior

- No Known Body Work- Glossy Paint- Original Paint- Excellent Windshield
- No Visible Scratches- No Visible Dents- Excellent Trim- No Visible Rust
- Detailed Ext and Int

Audio

- AM/FM- CD Player- CD Changer- In-Dash CD Changer- Tweeters- Anti-Theft TV
- DVD- LCD TV- Premium Sound- Satellite Radio- Equalizer- Entertainment System
- Touch Screen

Comfort

- AC- Cruise- Power Locks- Power Windows- Tint- Climate Control- Tilt
- Leather Steering Whl- Leather Shifter- Power Steering- Running Boards
- Digital Info Center- Navigation- Power Mirrors- Clock- Bedliner- Child Safety Locks
- Daytime Running Lights- Cell Phone Hookup- Driver Lumbar- Passenger Lumbar
- Bluetooth

Mechanical

- 4-Wheel Drive- Tow Package- Front Disc/Rear Drum Brakes- Locking Rear Differential
- Gasoline Fuel- Front Tow Hooks- Wheel Locks

Safety

- Anti-Lock Brakes- Dual Front Airbags- Side Airbags- Rear Side Airbags- Traction Control
- Security System- Fog Lights- Drivers Front Airbag- 2 Keyless Remotes
- Passenger Air Bag On/Off- Side Head Air Bag- Rear Head Air Bag
- Rollover Protection System- Tire Pressure Monitoring- Rear View Camera

History

- Service Records- Dealer Maintained- Non-Smoker- All Keys- No Known Problems
- Dealer Inspected

INTEREST RATES ARE NOT THE SAME FOR EVERY INQUIRY. THE INTEREST RATE HAS MANY FACTORS SUCH AS CUSTOMERS HISTORY OF ON TIME PAYMENTS, DOWN PAYMENT AMOUNT, VEHICLE OF INTEREST, ECT. TYPICAL DOWN PAYMENT REQUIREMENT IS ABOUT 20% & AS HIGH AS 50% OF TOTAL COST OF VEHICLE. TOTAL COST OF VEHICLE INCLUDES THE SALES PRICE, SALES TAX, REGISTRATION FEES, DMV PAPERWORK PROCESING FEE, & CA. SMOG CERTIFICATE FEE. THE PRICE ADVERTISED IS ONLY THE SALES PRICE. IT DOES NOT INCLUDE THE FEES LISTED ABOVE.

Auto Finance Center

autocentersd.com

6198860546

1464 Morena Blvd.

San Diego, CA 92110

© 2024 AutoRevo - All rights reserved. - Powered by AutoRevo