

## 2015 GMC Sierra 1500 SLE

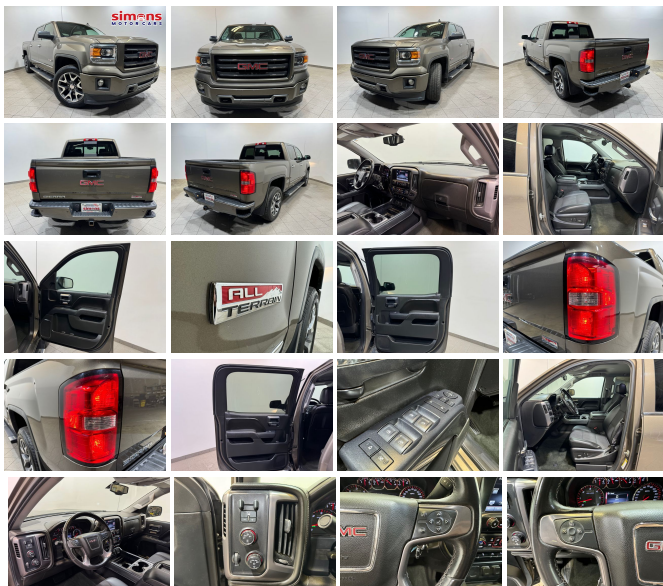
View this car on our website at [inventory.simonsmotorcars.com/7323346/ebrochure](http://inventory.simonsmotorcars.com/7323346/ebrochure)



Our Price **\$21,995**

### Specifications:

<b>Year:</b>	2015
<b>VIN:</b>	3GTU2UEC9FG145323
<b>Make:</b>	GMC
<b>Stock:</b>	13197
<b>Model/Trim:</b>	Sierra 1500 SLE
<b>Condition:</b>	Pre-Owned
<b>Body:</b>	Pickup Truck
<b>Exterior:</b>	BROWN
<b>Engine:</b>	EcoTec3 5.3L V8 355hp 383ft. lbs.
<b>Interior:</b>	Cloth
<b>Transmission:</b>	6-Speed Shiftable Automatic w/Overdrive
<b>Mileage:</b>	113,438
<b>Drivetrain:</b>	4 Wheel Drive
<b>Economy:</b>	City 16 / Highway 22



Introducing the 2015 GMC Sierra 1500 SLE, a truck that embodies rugged reliability and refined sophistication! With a proven track record and an impressive array of accolades, this Sierra is not just a vehicle; it's a statement of power, performance, and prestige.

#### ### Unmatched Performance

Under the hood, you'll find the heart of a beast: the EcoTec3 5.3L V8 engine, delivering an exhilarating 355 horsepower and a robust 383 lb-ft of torque. This powerhouse ensures that whether you're towing, hauling, or simply cruising, you have all the muscle you need. Paired with a 6-Speed Shiftable Automatic Transmission with Overdrive, this truck offers smooth, responsive shifts and exceptional control, making every drive a pleasure.

#### ### Distinctive Style

The exterior of this Sierra 1500 SLE is finished in a sophisticated brown that exudes a sense of strength and elegance. This unique color is sure to turn heads and make a lasting impression wherever you go. Step inside, and you'll be greeted by a comfortable and durable cloth interior, designed to withstand the rigors of daily use while providing a cozy, inviting atmosphere.

#### ### Award-Winning Excellence

- \*\*Edmunds's Best Retained Value: Honorable Mention\*\*
- \*\*Edmunds's Top 10 Least Expensive Trucks\*\*
- \*\*Edmunds's Top Recommended Trucks\*\*
- \*\*J.D. Power and Associates's APEAL Study: Top Models in Segment\*\*
- \*\*Kelley Blue Book's Best Resale Value: Top 10 Models\*\*
- \*\*Kelley Blue Book's Brand Image Awards: Most Refined Brand\*\*

These awards are a testament to the Sierra's exceptional quality, reliability, and value retention. When you invest in this truck, you're not just buying a vehicle; you're joining a legacy of excellence.

#### ### Practical and Reliable

With a mileage of 113,438 miles, this Sierra 1500 SLE has proven its durability and dependability. It's a truck that has stood the test of time and is ready to continue delivering outstanding performance for many more miles to come. The high mileage is a testament to its robust build and the meticulous care it has received.

#### ### Confidence and Peace of Mind

When you choose the 2015 GMC Sierra 1500 SLE, you're choosing a truck that's been recognized for its outstanding performance and design. The numerous awards it has garnered provide you with the confidence that you're making a smart investment. Whether you need a reliable workhorse for your business or a versatile vehicle for your adventures, this Sierra is equipped to handle it all.

#### ### Conclusion

Don't miss your chance to own a piece of automotive excellence. The 2015 GMC Sierra 1500 SLE is a truck that combines power, style, and reliability in one unbeatable package. With its award-winning pedigree, powerful V8 engine, and sophisticated design, this Sierra is the perfect companion for all your driving needs.

Act fast and make this exceptional truck yours today. Experience the thrill of driving a vehicle that has been celebrated by industry experts and loved by drivers everywhere. The 2015 GMC Sierra 1500 SLE is waiting for you—are you ready to take the wheel?

---

2015 GMC Sierra 1500 SLE

Simons Motorcars - 216-710-5300 - View this car on our website at [inventory.simonsmotorcars.com/7323346/ebrochure](http://inventory.simonsmotorcars.com/7323346/ebrochure)

## Vehicle History Report : as Of 09/08/2024

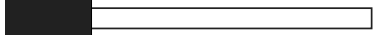
**CARFAX**

### Snapshot

**2015 GMC SIERRA 1500 SLE**



**Damage reported: minor damage**



MINOR MODERATE SEVERE

**24** Service history records



CARFAX 1-Owner vehicle



Personal vehicle



**113,438** Last reported odometer reading

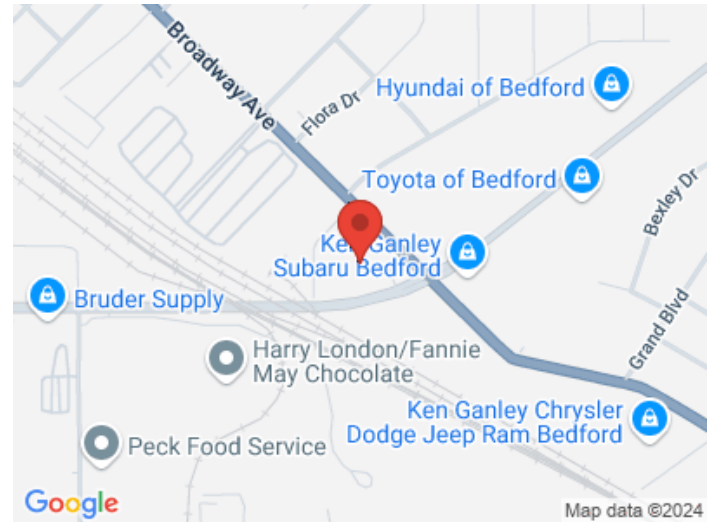


**FREE CARFAX Report**

See the full CARFAX Report for additional information

\*carfax Snapshot is a reflection of available information on the date the report was pulled. carfax is constantly being updated with new information and is subject to change at any time.

## Our Location :



2015 GMC Sierra 1500 SLE

Simons Motorcars - 216-710-5300 - View this car on our website at [inventory.simonsmotorcars.com/7323346/ebrochure](https://inventory.simonsmotorcars.com/7323346/ebrochure)

## Installed Options

### Interior

- Front air conditioning- Floor mat material: rubber/vinyl- Floor mats: front
- Steering wheel trim: leather- Cruise control- Multi-function remote: keyless entry
- Power outlet(s): two 12V front- Power steering- Clock- Digital odometer
- External temperature display- Multi-function display- Trip odometer
- Front seat type: 40-20-40 split bench - Rear seat folding: folds up
- Rear seat type: 60-40 split bench - Upholstery: cloth

### Exterior

- Front bumper color: chrome- Mirror color: body-color- Pickup bed light
- Tailgate: lift assist- Daytime running lights- Side mirrors: heated
- Tire Pressure Monitoring System- Wheels: painted aluminum alloy
- Front wipers: variable intermittent- Power windows- Tinted glass

[inventory.simonsmotorcars.com](http://inventory.simonsmotorcars.com)

216-710-5300

90 Broadway Ave

Bedford, OH 44146

© 2024 AutoRevo - All rights reserved. - Powered by AutoRevo