

## 2013 Audi A8 L 3.0T quattro

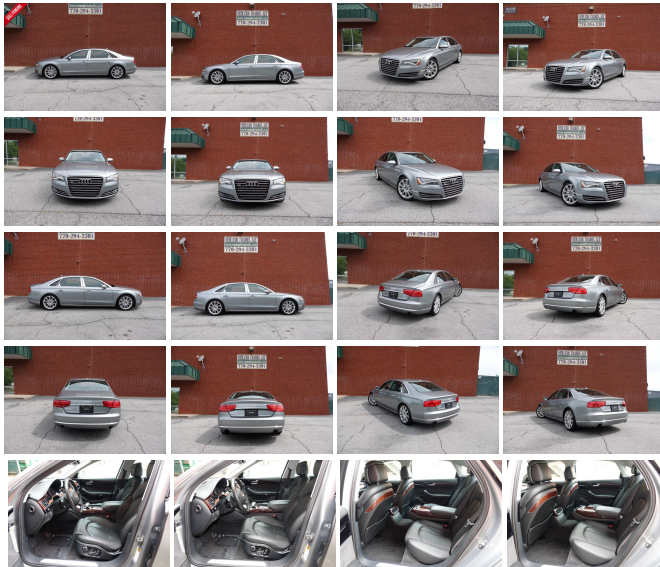
View this car on our website at [executiveautoonline.com/7322439/ebrochure](http://executiveautoonline.com/7322439/ebrochure)



Our Price **\$17,488**

### Specifications:

<b>Year:</b>	2013
<b>VIN:</b>	WAURGAFD6DN016261
<b>Make:</b>	Audi
<b>Stock:</b>	016261
<b>Model/Trim:</b>	A8 L 3.0T quattro
<b>Condition:</b>	Pre-Owned
<b>Body:</b>	Sedan
<b>Exterior:</b>	[Q4] Quartz Gray Metallic
<b>Engine:</b>	3.0L Supercharged V6 333hp 325ft. lbs.
<b>Interior:</b>	Black Leather
<b>Transmission:</b>	8-Speed Automatic with Tiptronic
<b>Mileage:</b>	67,365
<b>Drivetrain:</b>	All Wheel Drive
<b>Economy:</b>	City 18 / Highway 28



EXECUTIVE AUTO SALES

770-294-3301

WE ARE PLEASED TO OFFER  
YOU ANOTHER LOCAL  
CARFAX CERTIFIED LOW  
MILEAGE NEW CAR TRADE IN.

THE FEATURED VEHICLE IS A  
2013 AUDI A8L WITH ONLY  
67,000 MILES.

THIS BEAUTIFUL LUXURY

SEDAN FEATURES  
HEATED/COOLED LEATHER  
SEATS, POWER MOON ROOF,  
CAMERA PACKAGE, 20"  
SPORT WHEEL PACKAGE  
AND MANY MORE.

WE HAVE BOTH KEYS/BOOKS.

THIS VEHICLE HAS A WELL  
DOCUMENTED SERVICE  
HISTORY SINCE NEW.

THIS CAR WAS JUST  
SERVICED AND IS READY TO  
GO.

THIS CAR IS EXTREMELY  
CLEAN INSIDE AND OUT.

THIS CAR IS A NON SMOKERS  
VEHICLE SO THERE IS NO  
BAD SMELLS.

YOU WILL BE HARD PRESSED  
TO FIND A NICER 2013 AT  
ANY PRICE...CAR IS LIKE  
NEW.

WE SHIP NATIONWIDE.

WE OFFER THE BEST  
EXTENDED WARRANTIES IN

THE INDUSTRY WITH THE  
BEST PRICES.

CALL 770-294-3301

EXECUTIVEAUTOONLINE.COM

THANK YOU FOR VIEWING  
OUR VEHICLE'S.

2013 Audi A8 L 3.0T quattro

Executive Auto - 770-294-3301 - View this car on our website at [executiveautoonline.com/7322439/ebrochure](http://executiveautoonline.com/7322439/ebrochure)

Vehicle History Report : as Of 09/08/2024

**CARFAX**

Snapshot

2013 AUDI A8 L 3.0T QUATTRO



No accidents or damage reported to CARFAX



Regular oil changes



2 Previous owners



Types of owners: Personal lease  
Personal



Last owned in Georgia



67,365 Last reported odometer reading



**FREE CARFAX Report**

See the full CARFAX Report for additional information

\*carfax Snapshot is a reflection of available information on the date the report was pulled. carfax is constantly being updated with new information and is subject to change at any time.

Our Location :



## Installed Options

### Interior

- Air filtration- Front air conditioning: automatic climate control
- Front air conditioning zones: dual- Rear air conditioning: automatic climate control
- Rear air conditioning zones: dual- Center console trim: leather- Floor mat material: carpet
- Floor mats: front- Interior accents: woodgrain- Shift knob trim: leather
- Steering wheel trim: leather- Ambient lighting- Cargo area light- Cruise control
- Memorized settings: 2 driver- Multi-function remote: proximity entry system
- Power outlet(s): 12V front- Power steering: variable/speed-proportional- Push-button start
- Rearview mirror: auto-dimming- Steering wheel: power tilt and telescopic
- Sunshade: power rear window
- Universal remote transmitter: Homelink - garage door opener - Clock- Compass
- External temperature display- Head-up display- Multi-function display- Trip odometer
- Driver seat: heated- Driver seat power adjustments: 18- Front seat type: bucket
- Passenger seat: heated- Passenger seat power adjustments: 18
- Rear seat type: 40-20-40 split bench - Upholstery: leather

### Exterior

- Exhaust: dual tip- Front bumper color: body-color- Rear trunk/liftgate: power operated
- Daytime running lights- Exterior entry lights: puddle lamps- Headlight cleaners
- Rear fog lights- Taillights: LED- Side mirror adjustments: power
- Side mirrors: auto-dimming- Moonroof / Sunroof: fixed glass - Spare wheel type: steel
- Tire Pressure Monitoring System- Wheels: aluminum alloy- Front wipers: rain sensing
- Heated windshield washer jets- Power windows: safety reverse- Window defogger: rear

## Option Packages

### Factory Installed Packages

<b>20 Inch 10-Parallel Spoke Wheels</b> Includes P265/40R20 all-season tires.	<b>\$1,200</b>
<b>Camera Assistance Package</b> Includes high-beam assistant and topview camera system (front, rear and side views).	<b>\$750</b>
<b>Cold Weather Package</b> Includes heated 4-spoke steering wheel with shift paddles, rear heated seats and rear seat pass thru-through with ski bag.	<b>\$800</b>
<b>Driver Assistance Package</b> Includes adaptive cruise control with stop and go, Audi lane assist, Audi side assist and Audi pre sense plus which monitors traffic conditions to detect possible collision scenarios.	<b>\$3,000</b>
<b>Option Packages Total</b>	<b>\$5,750</b>

It is the customer's sole responsibility to verify the existence and condition of any equipment listed. Neither the dealership nor AutoRevo is responsible for misprints on prices or equipment. It is the customer's sole responsibility to verify the accuracy of the prices with the dealer. Pricing subject to change without notice. Executive Auto may use partners or affiliates for financing which may include third party companies pulling your credit.

Executive Auto

[executiveautoonline.com](http://executiveautoonline.com)

770-294-3301

3503 Diversified Dr.

Loganville, Georgia 30052

© 2024 AutoRevo - All rights reserved. - Powered by AutoRevo