

# 2018 GMC Sierra 1500 Denali

View this car on our website at [texasautosdirect.com/7321504/ebrochure](http://texasautosdirect.com/7321504/ebrochure)



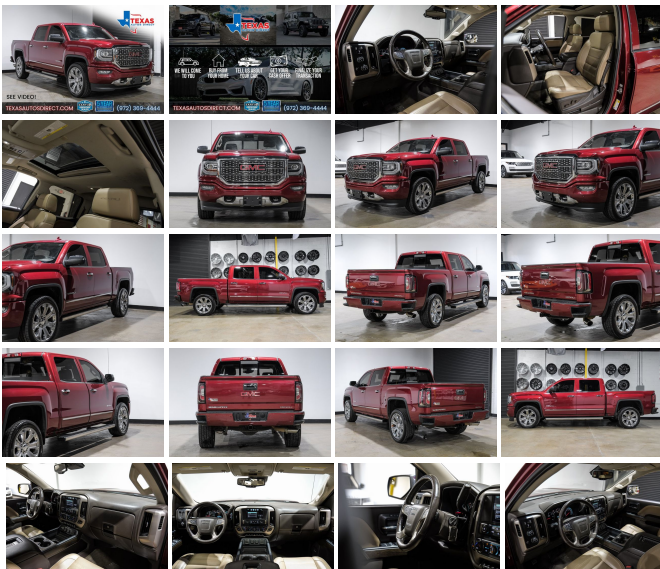
Price **\$30,444**

## Specifications:

<b>Year:</b>	2018
<b>VIN:</b>	3GTU2PEJ3JG489156
<b>Make:</b>	GMC
<b>Stock:</b>	489156
<b>Model/Trim:</b>	Sierra 1500 Denali
<b>Condition:</b>	Pre-Owned
<b>Body:</b>	Pickup Truck
<b>Exterior:</b>	Red Quartz Tintcoat
<b>Engine:</b>	EcoTec3 6.2L V8 420hp 460ft. lbs.
<b>Interior:</b>	Cocoa/Dark Sand Leather
<b>Transmission:</b>	8-Speed Shiftable Automatic
<b>Mileage:</b>	106,963
<b>Drivetrain:</b>	4 Wheel Drive
<b>Economy:</b>	City 15 / Highway 20

Red Quartz Tintcoat 2018 GMC Sierra 1500 Denali 4WD 8-Speed Automatic with Overdrive EcoTec3 6.2L V8 8-Speed Automatic with Overdrive, 4WD, Cocoa/Dark Sand Leather.

This 2018 GMC Sierra 1500 Denali in Red Quartz Tintcoat comes with the following features: EcoTec3 6.2L V8 8-Speed Automatic with Overdrive 4WD 8-Speed Automatic with Overdrive, 4WD, and Cocoa/Dark Sand Leather Denali Ultimate Package (Chrome Recovery Hooks, Integrated Trailer Brake Controller, Power Sunroof, Tri-Mode Power Steps, Wheel Locks (Set of 4) (LPO), and Wheels: 22" Aluminum w/Premium Paint), Enhanced Driver Alert Package (Forward Collision Alert, IntelliBeam Automatic High Beam On/Off Headlight, Lane Keep Assist, and Low Speed Forward Automatic Braking), Preferred Equipment Group 5SA (110-Volt AC Power Outlet, 150 Amp Alternator, 1st & 2nd Row Color-Keyed Carpeted Floor Mats, 2-Speed Active Electronic AutoTrac Transfer Case, 6" Rectangular Chromed Tubular Assist Steps, 8" Multi-Color Customizable Driver Display, Auto-Dimming Inside Rear-View Mirror, Body Color Lower Front Bumper, Body Color Rear Bumper w/Cornersteps, Bose Speaker System, Chrome Bodyside Moldings, Chrome Door Handles, Chrome Mirror Caps, Color-Keyed Carpeting, Deep-Tinted Glass, Driver & Front Passenger Illuminated Vanity Mirrors, Dual-Zone Automatic Climate Control, Electric Rear-Window Defogger, EZ Lift & Lower Tailgate, Front Frame-Mounted Black Recovery Hooks, GMC 4G LTE, GMC Connected Access, Heated & Ventilated Front Bucket Seats, Leather Wrapped Heated Steering Wheel, Manual Tilt/Telescoping Steering Column, OnStar & GMC Connected Services Capable, Polished Exhaust Tip, Power Adjustable Pedals, Power Folding & Adjustable Heated Outside Mirrors, Power Sliding Rear Window w/Defogger, Power Windows w/Driver Express Up & Down, Rear 60/40 Folding Bench Seat (Folds Up), Rear Wheelhouse

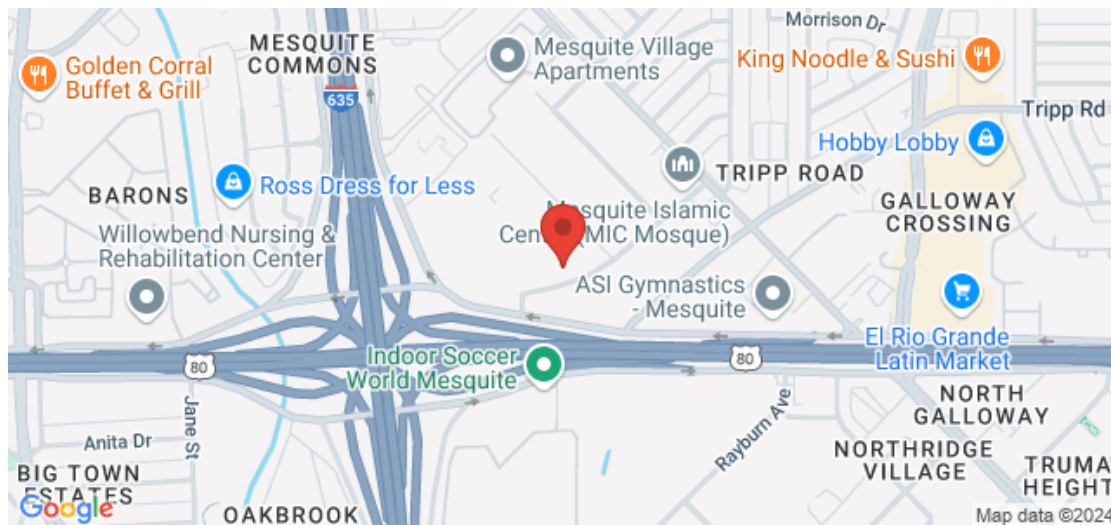


Liners, Remote Keyless Entry, Remote Locking Tailgate, Remote Vehicle Starter System, Single Slot CD/MP3 Player, Steering Wheel Audio Controls, Theft Deterrent System (Unauthorized Entry), Thin Profile LED Fog Lamps, Ultrasonic Front & Rear Park Assist, and Universal Home Remote), Trailing Equipment, 8-Speed Automatic with Overdrive, 4WD, Cocoa/Dark Sand Leather, 3.23 Rear Axle Ratio, 3.42 Rear Axle Ratio, 4-Wheel Disc Brakes, 7 Speakers, ABS brakes, Active Noise Cancellation, Adaptive suspension, Adjustable pedals, Air Conditioning, Alloy wheels, AM/FM radio: SiriusXM, Auto High-beam Headlights, Auto-dimming door mirrors, Auto-dimming Rear-View mirror, Automatic temperature control, Bodyside moldings, Brake assist, Bumpers: body-color, CD player, Chrome Tailgate Handle (LPO), Compass, Console Insert Organizer Tray (LPO), Delay-off headlights, Driver door bin, Driver vanity mirror, Dual front impact airbags, Dual front side impact airbags, Electronic Stability Control, Exterior Parking Camera Rear, Floor Mounted Console, Front anti-roll bar, Front Center Armrest w/Storage, Front dual zone A/C, Front fog lights, Front Full Feature Power Reclining Bucket Seats, Front License Plate Kit, Front reading lights, Front wheel independent suspension, Fully automatic headlights, Garage door transmitter, HD Radio, Heated door mirrors, Heated front seats, Heated steering wheel, Illuminated entry, Low tire pressure warning, MagneRide Magnetic Ride Control Suspension, Memory seat, Navigation System, Occupant sensing airbag, Outside temperature display, Overhead airbag, Overhead console, Panic alarm, Passenger door bin, Passenger vanity mirror, Perforated Leather Appointed Seat Trim, Power door mirrors, Power driver seat, Power passenger seat, Power steering, Power windows, Premium audio system: GMC Infotainment System, Radio data system, Radio: AM/FM/GMC Infotainment & Navigation, Rear reading lights, Rear seat center armrest, Rear step bumper, Rear window defroster, Remote keyless entry, Security system, SiriusXM Satellite Radio, Speed control, Speed-sensing steering, Split folding rear seat, Steering wheel mou

2018 GMC Sierra 1500 Denali

Texas Autos Direct - (972) 369-4444 - View this car on our website at [texasautosdirect.com/7321504/ebrochure](http://texasautosdirect.com/7321504/ebrochure)

#### Our Location :



## Installed Options

### Interior

- Air filtration- Front air conditioning: automatic climate control
- Front air conditioning zones: dual- Armrests: rear center folding with storage
- Floor mat material: carpet- Floor mats: front- Heated steering wheel
- Steering wheel trim: leather- Adjustable pedals: power- Ambient lighting
- Capless fuel filler system- Cruise control- Memorized settings: 2 driver
- Multi-function remote: keyless entry- Power outlet(s): 115V- Power steering
- Rearview mirror: auto-dimming- Remote engine start- Steering wheel: tilt and telescopic
- Universal remote transmitter: garage door opener- Wireless charging station: front- Clock
- Compass- Digital odometer- External temperature display- Multi-function display
- Trip odometer- Driver seat: heated- Driver seat power adjustments: 12
- Front seat type: bucket- Passenger seat: heated
- Passenger seat power adjustments: 12- Rear seat folding: folds up
- Rear seat type: 60-40 split bench - Upholstery: leather-trimmed

### Exterior

- Body side moldings: chrome- Door handle color: chrome- Front bumper color: body-color
- Mirror color: chrome- Pickup bed light: LED- Pickup bed liner: spray-on- Running boards
- Tailgate: lift assist- Daytime running lights: LED- Exterior entry lights: approach lamps
- Front fog lights: LED- Taillights: LED- Side mirror adjustments: power
- Side mirrors: driver side auto-dimming- Spare wheel type: steel
- Tire Pressure Monitoring System- Wheels: aluminum alloy
- Front wipers: variable intermittent- Pickup sliding rear window: power horizontal
- Power windows- Tinted glass- Window defogger: rear

Texas Autos Direct

[texasautosdirect.com](https://texasautosdirect.com)

(972) 369-4444

1525 Mariposa Drive

Mesquite, TX 75150

© 2024 AutoRevo - All rights reserved. - Powered by AutoRevo