

# 2014 Ford Flex SEL 3 MONTH/3,000 MILE NATIONAL POWERTRAIN WARRANTY

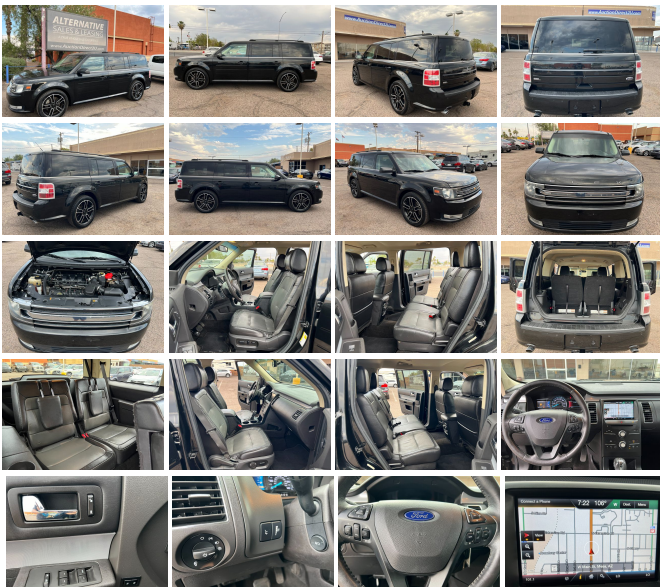
View this car on our website at [auctiondirect2u.com/7321156/ebrochure](http://auctiondirect2u.com/7321156/ebrochure)



Our Price **\$11,980**

## Specifications:

<b>Year:</b>	2014
<b>VIN:</b>	2FMGK5C88EBD24953
<b>Make:</b>	Ford
<b>Model/Trim:</b>	Flex SEL 3 MONTH/3,000 MILE NATIONAL POWERTRAIN WARRANTY
<b>Condition:</b>	Pre-Owned
<b>Body:</b>	Wagon
<b>Exterior:</b>	[UH] Tuxedo Black Metallic
<b>Engine:</b>	3.5L V6 287hp 254ft. lbs.
<b>Interior:</b>	Charcoal Black Cloth
<b>Transmission:</b>	6-Speed Shiftable Automatic
<b>Mileage:</b>	88,513
<b>Drivetrain:</b>	Front Wheel Drive
<b>Economy:</b>	City 18 / Highway 25



2014 FORD FLEX SEL 3.5L V6 - Good Maintenance History on Carfax, Just Serviced, 88k Actual Miles, Runs and Drives Great, Equipment Group 202A: Includes vehicle with standard equipment, an 110V inverter, body-color liftgate applique, power liftgate, and rear view camera, adjustable pedals with memory, blind spot information system with cross-traffic alert, leather-trimmed seating surfaces (driver and front-passenger, 2nd row outboard seats, and vinyl 3rd row), memory driver's seat, mirrors exterior with security approach lamps, premium audio system with 7 speakers and remote start, Appearance Package: Includes monochromatic roof, exterior mirrors with black caps, and 20 inch painted black machined aluminum face wheels, leather-trimmed seats with gray perforated-leather inserts, leather-wrapped steering wheel with meteorite black bezel, unique instrument panel and door trim appliques and floor mats first and second row with unique logo on first row, Voice Activated Navigation System, Third Row Seat, Front and Rear AC. Clean Title, Per Carfax it shows minor damage reported to the driver front end on 02/15/2024. Since then it has been repaired and shows no signs of damage. This is a new cars store trade-in we acquired. We are now offering it for sale to the public. Vehicle comes with a 3 Month/3,000 Mile National Powertrain Warranty. Financing available. VIN# 2FMGK5C88EBD24953. \$11,980.00 (480)-468-1229 (Se Habla Español)

Vehicle History Report : as Of 09/08/2024



Snapshot

2014 FORD FLEX SEL



Damage reported: minor damage



MINOR MODERATE SEVERE

9 Service history records



2 Previous owners



Types of owners: Personal lease, Personal



88,513 Last reported odometer reading



**FREE CARFAX Report**

See the full CARFAX Report for additional information

\*carfax Snapshot is a reflection of available information on the date the report was pulled. carfax is constantly being updated with new information and is subject to change at any time.

Our Location :



2014 Ford Flex SEL 3 MONTH/3,000 MILE NATIONAL POWERTRAIN WARRANTY

Auction-Direct2U - (480) 468-1229 - View this car on our website at [auctiondirect2u.com/7321156/ebrochure](http://auctiondirect2u.com/7321156/ebrochure)

## Installed Options

### Interior

- Air filtration- Front air conditioning: automatic climate control
- Front air conditioning zones: dual- Rear air conditioning: independently controlled
- Rear vents: third row- Door trim: wood- Floor mat material: carpet- Floor mats: front
- Interior accents: wood-tone- Shift knob trim: leather- Steering wheel trim: leather
- Capless fuel filler system- Cargo area light- Cruise control- Footwell lights- Keypad entry
- Multi-function remote: keyless entry- Power outlet(s): 12V front- Power steering
- Rearview mirror: auto-dimming- Steering wheel: tilt and telescopic
- Universal remote transmitter: garage door opener - Clock- Compass- Digital odometer
- External temperature display- Multi-function display- Trip odometer- Driver seat: heated
- Driver seat power adjustments: 10- Front seat type: bucket - Passenger seat: heated
- Passenger seat power adjustments: 6- Rear seat folding: power
- Rear seat type: 60-40 split bench - Third row seat folding: fold flat into floor
- Third row seat type: 50-50 split bench - Upholstery: cloth

### Exterior

- Exhaust: dual tip- Front bumper color: body-color- Exterior entry lights: approach lamps
- Front fog lights- Side mirrors: heated- Spare wheel type: steel
- Tire Pressure Monitoring System- Wheels: painted aluminum alloy
- Front wipers: variable intermittent- Power windows- Rear privacy glass
- Rear wiper: dual speed- Window defogger: rear

## Option Packages

### Factory Installed Packages

---

#### Voice Activated Navigation System

Includes 6 months subscription to Sirius.

\$795

---

#### Appearance Package

Includes monochromatic roof, exterior mirrors with black caps, and 20 inch painted black machined aluminum face wheels, leather-trimmed seats with gray perforated-leather inserts, leather-wrapped steering wheel with meteorite black bezel, unique instrument panel and door trim appliques and floor mats first and second row with unique logo on first row.

\$1,495

---

#### Equipment Group 202A

Includes vehicle with standard equipment, an 110V inverter, body-color liftgate applique, power liftgate, and rear view camera, adjustable pedals with memory, blind spot information system with cross-traffic alert, leather-trimmed seating surfaces (driver and front-passenger, 2nd row outboard seats, and vinyl 3rd row), memory driver's seat, mirrors exterior with security approach lamps, premium audio system with 7 speakers and remote start.

\$2,500

---

#### Option Packages Total

\$4,790

Auction-Direct2U

[auctiondirect2u.com](http://auctiondirect2u.com)

(480) 468-1229

665 W. Main St.

Mesa, Arizona 85201

© 2024 AutoRevo - All rights reserved. - Powered by AutoRevo