

racperformance.com
214-269-1570
3221 Skylane Dr.
Carrollton, TX 75006

RAC Performance

2009 Porsche 911 Carrera S

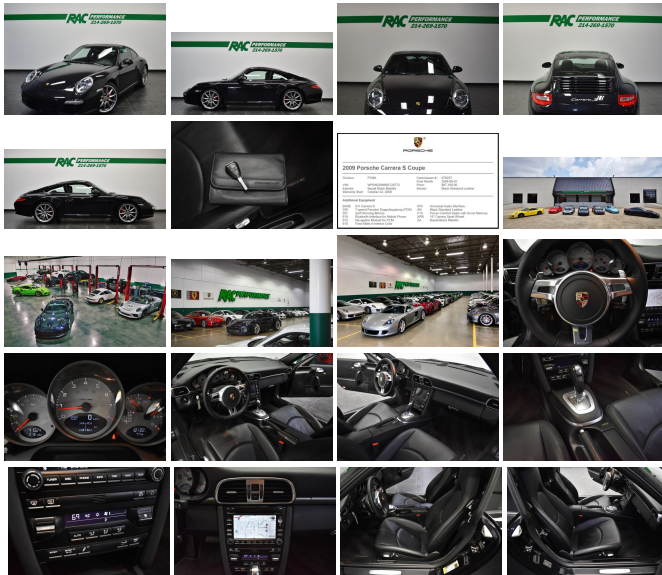
View this car on our website at racperformance.com/7319305/ebrochure



Our Price **\$66,995**

Specifications:

Year: 2009
VIN: WP0AB29969S720772
Make: Porsche
Stock: R3344
Model/Trim: 911 Carrera S
Condition: Pre-Owned
Body: Coupe
Exterior: [Z4] Basalt Black Metallic
Engine: 3.8L H6 385hp 310ft. lbs.
Interior: Black Leather
Transmission: 7-Speed Double Clutch
Mileage: 41,024
Drivetrain: Rear Wheel Drive
Economy: City 18 / Highway 25



CLEAN CARFAX, 7-SPEED PORSCHE DOPPELKUPPLUNG (PDK), FRESH ANNUAL SERVICE, SELF DIMMING MIRRORS, BLUETOOTH INTERFACE FOR MOBILE PHONE, NAVIGATION MODULE FOR PCM, UNIVERSAL AUDIO INTERFACE, POWER COMFORT SEATS WITH DRIVER MEMORY, 19" CARRERA SPORT WHEEL, FLOOR MATS IN INTERIOR COLOR, BLACK STANDARD LEATHER, BASALT BLACK METALLIC!!! This car has been inspected by our certified technicians and is ready to drive home. Upgrades are available at RAC Performance. TUNES, EXHAUST, WHEELS, TIRES and MORE!

Contact our professional sales staff at 214-269-1575 for any questions or additional information. We also offer competitive finance rates as low as 6.9%.

We hand pick only the finest automobiles to sell and every vehicle gets a rigorous internal inspection by our certified technicians. At our 9000 square foot state of the art facility, RAC Performance offers service on Porsche, RUF, Ferrari, Maserati and Lamborghini models. We offer dealership quality service and repairs at competitive prices and only sell the finest vehicles! RAC Performance cannot guarantee the availability of vehicle books/manuals, additional keys, or additional accessories with vehicle purchase, unless otherwise stated in the vehicle description or by an RAC sales professional.

Stop by and check out our state-of-the-art Service Department, Performance Shop and Huge 32,000 square foot Indoor Showroom!

We facilitate door-to-door shipping to anywhere in the world at an affordable price.

www.RACPerformance.com

Vehicle History Report : as Of 07/27/2024



Snapshot

2009 PORSCHE 911 CARRERA S



No accidents or damage reported to CARFAX



27 Service history records



6 Previous owners



Personal vehicle



Last owned in Texas



40,548 Last reported odometer reading



FREE CARFAX Report

See the full CARFAX Report for additional information

*carfax Snapshot is a reflection of available information on the date the report was pulled. carfax is constantly being updated with new information and is subject to change at any time.

Our Location :



2009 Porsche 911 Carrera S

RAC Performance - 214-269-1570 - View this car on our website at racperformance.com/7319305/ebrochure

Installed Options

Interior

- Air filtration: active charcoal- Front air conditioning: automatic climate control
- Center console trim: leather- Dash trim: leather- Door trim: leather
- Floor mat material: carpet- Floor mats: front- Shift knob trim: alloy
- Steering wheel trim: leather- Cargo area light- Cruise control
- Multi-function remote: keyless entry- Power outlet(s): 12V
- Power steering: variable/speed-proportional- Steering wheel: tilt and telescopic
- Universal remote transmitter- External temperature display- Trip odometer
- Front seat type: sport bucket - Rear seat folding: split- Rear seat type: bucket
- Upholstery: leather

Exterior

- Exhaust: dual tip- Rear spoiler- Daytime running lights- Front fog lights- Rear fog lights
- Side mirror adjustments: power- Side mirrors: heated- Tire Pressure Monitoring System
- Front wipers: rain sensing- Heated windshield washer jets- Power windows
- Window defogger: rear

Option Packages

Factory Installed Packages

Bluetooth Interface for Mobile Phone Includes basic phone functions on PCM or multi-function steering wheel.	\$695
Navigation Module For PCM Include GPS navigation module with extended navigation. (Extended navigation includes dynamic route calculation, automatic route recording, back track navigation, and facilitates navigation in unmapped areas.)	\$2,110
Universal Audio Interface Includes connections for three audio source types, iPod, USB for memory stick with MP3 files and auxiliary interface for other source.	\$440
19" Carrera Sport Wheels Includes set of one-piece alloy wheels with ten-spoke design, wheel painted in GT silver metallic and polished rim. Also includes front 235/35 ZR19 19 inch x 8.5 inch tires and rear 305/30 ZR19 19 inch x 11.5 inch tires.	\$835
Basalt Black Metallic Paint	\$710
Floor Mats In Interior Color	\$140
Power Comfort Seats with Driver Memory Includes fully electrically adjustable seats with driver memory, adjustable lumbar support for driver and passenger.	\$1,550
Self-Dimming Mirrors Includes self-dimming interior and exterior mirrors.	\$420
Option Packages Total	\$6,900