

# 2015 Nissan Pathfinder SL

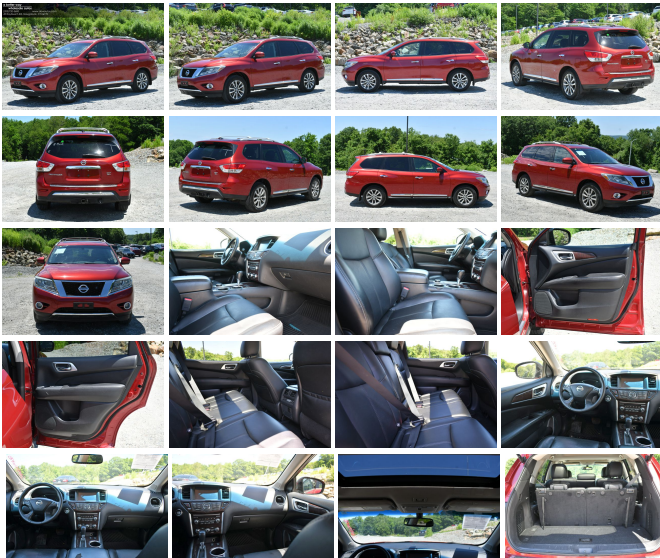
View this car on our website at [abwautos.com/7319216/ebrochure](http://abwautos.com/7319216/ebrochure)



Our Price **\$10,995**

## Specifications:

|                      |                           |
|----------------------|---------------------------|
| <b>Year:</b>         | 2015                      |
| <b>VIN:</b>          | 5N1AR2MM3FC613753         |
| <b>Make:</b>         | Nissan                    |
| <b>Stock:</b>        | 613753A                   |
| <b>Model/Trim:</b>   | Pathfinder SL             |
| <b>Condition:</b>    | Pre-Owned                 |
| <b>Body:</b>         | SUV                       |
| <b>Exterior:</b>     | [NAH] Cayenne Red         |
| <b>Engine:</b>       | 3.5L V6 260hp 240ft. lbs. |
| <b>Interior:</b>     | Charcoal Leather          |
| <b>Transmission:</b> | Automatic                 |
| <b>Mileage:</b>      | 100,500                   |
| <b>Drivetrain:</b>   | 4 Wheel Drive             |
| <b>Economy:</b>      | City 19 / Highway 26      |



- Impressive 2015 Nissan Pathfinder SL with 100,500 miles in striking red.
- Luxurious black leather interior with advanced comfort features.
- Powerful 3.5L V6 engine delivering 260hp and 240ft. lbs. torque.
- Loaded with premium options: SL Premium Package, Blind Spot Safety, Cross Traffic Alert, and more.
- Award-winning SUV: Kelley Blue Book's Best Buy and Best Family Cars finalist.

Step into a world of elegance and power with this 2015 Nissan Pathfinder SL, a stunning SUV that perfectly balances performance, luxury, and practicality. With 100,500 miles on the odometer, this Pathfinder is ready to take you on countless new adventures. Its exterior, a captivating red, is sure to turn heads wherever you go, while the sleek lines and robust stance exude confidence and style.

Inside, you'll be enveloped in the ultimate comfort of black leather-trimmed seats, offering a touch of sophistication and durability. The driver's seat boasts 8-way power adjustments, ensuring you find the perfect driving position every time. With dual-zone automatic climate control in the front and rear automatic climate control, every passenger can enjoy a personalized and comfortable environment, no matter the weather outside.

Under the hood lies a formidable 3.5L V6 engine, delivering an exhilarating 260 horsepower and 240 ft. lbs. of torque. Paired with a smooth automatic transmission, this Pathfinder offers a driving experience that's both powerful and refined. Whether you're navigating city streets or cruising on the highway, you'll appreciate the seamless

blend of performance and efficiency.

This Pathfinder SL is equipped with an array of premium features designed to enhance your driving experience. The SL Premium Package includes everything you need for a luxurious journey, while the 4-Piece Splash Guards and Rear Bumper Protector keep your vehicle looking pristine. The Roof Rack Cross Bars and Cargo Package provide ample storage solutions for all your gear, making this SUV perfect for family trips and weekend getaways.

Safety is paramount in the 2015 Nissan Pathfinder SL, with advanced features like the Blind Spot Safety sensor/alert and Rear Cross Traffic Alert, giving you peace of mind on every drive. The multi-function remote with proximity entry system adds a layer of convenience, allowing you to unlock and start your vehicle without having to fumble for your keys.

The Pathfinder's interior is thoughtfully designed, with leather steering wheel trim adding a touch of luxury, and aluminum alloy wheels that complement the vehicle's stylish exterior. The rear air conditioning ensures that all passengers remain comfortable, no matter where they're seated.

Recognized as a finalist for Kelley Blue Book's Best Buy: Midsize SUV and Best Family Cars, this 2015 Nissan Pathfinder SL stands out in its class. It's a testament to Nissan's commitment to quality, reliability, and innovation.

Don't miss the opportunity to own this remarkable SUV. With its combination of luxury, performance, and advanced features, the 2015 Nissan Pathfinder SL is the perfect vehicle for those who demand the best. Visit us today and experience the Pathfinder's unparalleled blend of style and substance for yourself. Your next adventure awaits!

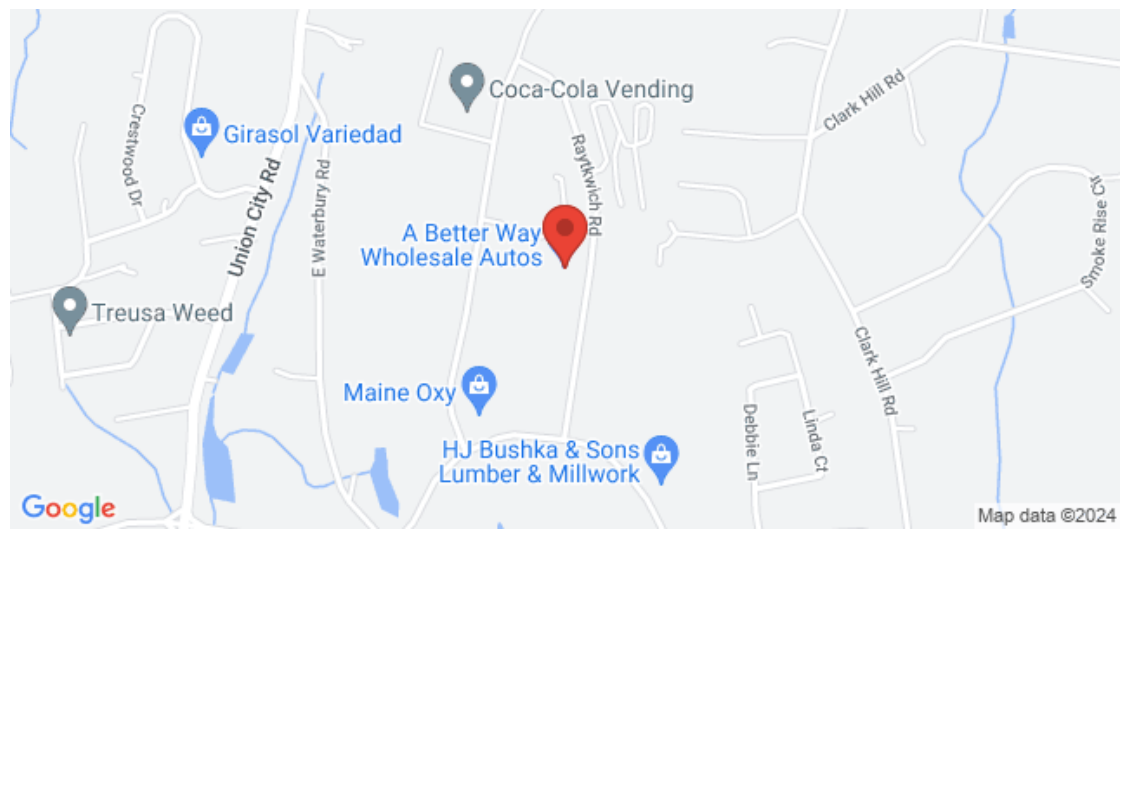
2023 DealerRater Consumer Satisfaction Award winner - Connecticut's highest volume independent auto dealer! We have the area's largest selection of pre-owned vehicles at the lowest prices available, over 700 in stock to choose from! Financing for all credit tiers and extended warranties available. Please contact our sales department for more information about this vehicle or the rest of our inventory. Call 203-720-5600, view our website [www.abwautos.com](http://www.abwautos.com), or visit our showroom in Naugatuck, CT. Open 7 days a week!

---

2015 Nissan Pathfinder SL

A Better Way Wholesale Autos-CT - 203-720-5600 - View this car on our website at [abwautos.com/7319216/ebrochure](http://abwautos.com/7319216/ebrochure)

**Our Location :**



2015 Nissan Pathfinder SL

A Better Way Wholesale Autos-CT - 203-720-5600 - View this car on our website at [abwautos.com/7319216/ebrochure](http://abwautos.com/7319216/ebrochure)

## Installed Options

### Interior

- Air filtration- Front air conditioning: automatic climate control
- Front air conditioning zones: dual- Rear air conditioning: automatic climate control
- Armrests: rear center folding with storage- Door sill trim: stainless steel
- Interior accents: chrome- Shift knob trim: leather- Steering wheel trim: leather
- Cargo area light- Cruise control- Memorized settings: 2 driver
- Multi-function remote: proximity entry system- Power outlet(s): 115V front- Power steering
- Push-button start- Rearview mirror: auto-dimming- Remote engine start
- Steering wheel: tilt and telescopic
- Universal remote transmitter: Homelink - garage door opener - Clock- Compass
- Digital odometer- External temperature display- Multi-function display- Trip odometer
- Driver seat: heated- Driver seat power adjustments: 8- Front seat type: bucket
- Passenger seat: heated- Rear seat: heated- Rear seat folding: flat
- Rear seat type: 60-40 split bench - Third row seat folding: flat
- Third row seat type: 50-50 split bench - Upholstery: leather-trimmed

### Exterior

- Body side moldings: chrome- Door handle color: chrome- Front bumper color: body-color
- Mirror color: body-color- Rear spoiler: roofline- Front fog lights- Side mirrors: heated
- Roof rack crossbars: chrome- Spare wheel type: steel- Tire Pressure Monitoring System
- Wheels: aluminum alloy- Front wipers: speed sensitive- Power windows
- Rear privacy glass- Rear wiper: intermittent- Solar-tinted glass- Window defogger: rear

## Option Packages

### Factory Installed Packages

|   |         |
|---|---------|
| 4-Piece Splash Guards   | \$160   |
| Rear Bumper Protector   | \$205   |
| Roof Rack Cross Bars  | \$355   |
| Cargo Package<br>Includes cargo area protector, rear cargo cover,<br>under-floor storage dividers, and first aid kit.   | \$305   |
| SL Premium Package<br>Includes Bose premium audio system, 13<br>speakers, HDD Navigation system with 8.0 inch<br>color touch-screen monitor, CD/DVD player,<br>voice recognition, XM NavTraffic and<br>NavWeather capability, Bluetooth streaming<br>audio, compass, Low Cost Around View monitor<br>system, tow hitch receiver w/integrated finisher,<br>trailer harness, and dual panorama moonroof<br>with one-touch tilt/open/close controls. | \$3,330 |
| Option Packages Total   | \$4,355 |

REGARDING STATE STATUTE AND REGULATORY COMPLIANCE: THIS ADVERTISEMENT DOES NOT CONSTITUTE AN OFFER TO SELL OR PURCHASE A VEHICLE. AN OFFER FOR SALE OR PURCHASE MAY ONLY BE MADE IN PERSON IN OUR SHOWROOM VIA THE PRESENTATION OF A PURCHASE ORDER, COMPLETED IN ITS ENTIRETY. Some vehicles may still be in process and therefore may not be available for immediate sale. Included Accessories: We try our best to procure books and extra keys from the previous owners. With that said, we do not always have spare keys, books, floor mats, or other accessories for every vehicle. In most cases we can only provide the accessories that are photographed. For instance, if we show a navigation display with a map, there is a navigation disc with the car. If you do not see it, assume the item is not included. We encourage you to email or call us if you are concerned about specific items like floor mats, spare keys, nav discs, DVD headsets, etc. The description of vehicles provided by AutoRevo is generated through the use of artificial intelligence and machine learning algorithms. While every effort is made to ensure accuracy, AutoRevo cannot guarantee the completeness or reliability of the information provided. The description is intended to be used as a general guide and should not be relied upon as a substitute for independent investigation and verification. Neither A Better Way Wholesale Autos nor AutoRevo shall be liable for any errors or omissions in the description and makes no representation or warranty, express or implied, about the accuracy, reliability, completeness, or timeliness of the information. The user assumes all risks associated with the use of the information provided. Fuel Economy: MPG based on and sourced from EPA mileage estimates. Use for comparison purposes only. Your actual mileage will vary depending on driving habits and vehicle maintenance. Advertised price does not include state or local taxes, registration costs or dealer conveyance fee of \$798.00. Some vehicles in our inventory have been used as a daily rental. See commercially available history reports to see if this disclaimer applies to any particular vehicle.

A Better Way Wholesale Autos-CT

[abwautos.com](http://abwautos.com)

203-720-5600

49 Raytkwich Rd

Naugatuck, Connecticut 06770

© 2024 AutoRevo - All rights reserved. - Powered by AutoRevo