



## 2016 Hyundai SANTA FE Sport 2.4L

**Al Schneck 901-870-6999**

**Cash Price \$12,250**

View this vehicle on our website at [schneckmotorcompany.com](http://schneckmotorcompany.com)

*Schneck Motor Co*

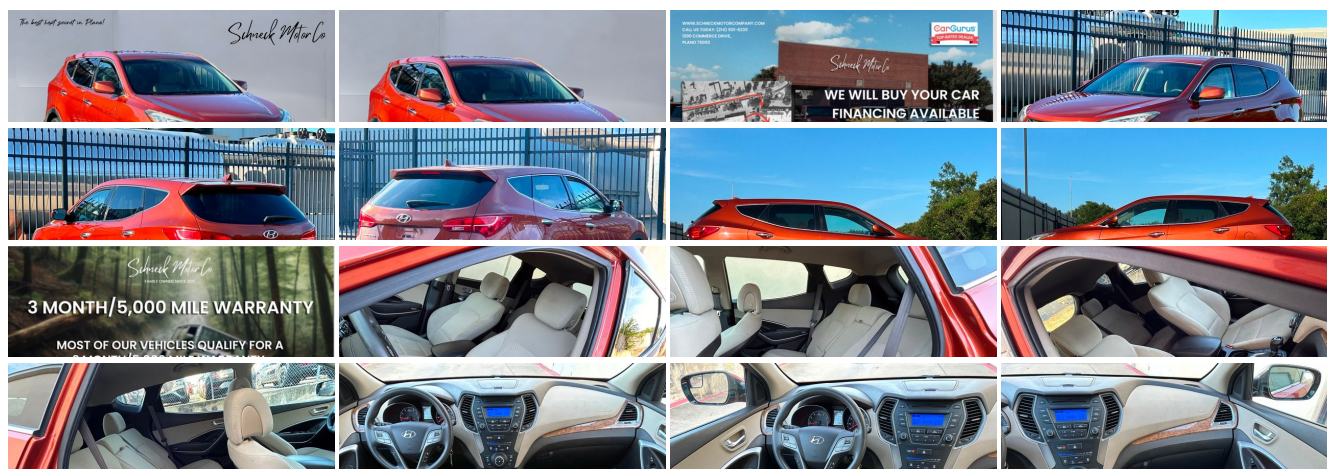
[901-870-6999](tel:901-870-6999)

1200 Commerce Drive , Plano, TX 75093

Photos

Details

Contact





## Specifications:

<b>Year:</b>	2016
<b>VIN:</b>	5XYZT3LB3GG359599
<b>Make:</b>	Hyundai
<b>Stock:</b>	359599
<b>Model/Trim:</b>	SANTA FE Sport 2.4L
<b>Condition:</b>	Pre-Owned
<b>Body:</b>	SUV
<b>Exterior:</b>	[RR7] Canyon Copper
<b>Engine:</b>	2.4L I4 190hp 181ft. lbs.
<b>Interior:</b>	Gray Cloth
<b>Transmission:</b>	6-Speed Shiftable Automatic
<b>Mileage:</b>	91,507
<b>Drivetrain:</b>	Front Wheel Drive
<b>Economy:</b>	City 20 / Highway 27

## Vehicle Description

Are you ready to elevate your driving experience with a vehicle that perfectly balances performance, comfort, and reliability? Introducing the 2016 Hyundai SANTA FE Sport 2.4L – a dynamic SUV that's engineered to impress and designed to deliver an exceptional driving experience.

With just 91,507 miles on the odometer, this SANTA FE Sport is primed and ready for many more adventures. Under the hood, you'll find a robust 2.4L I4 engine that delivers an impressive 190 horsepower and 181 lb-ft of torque. This powerful yet efficient engine ensures you have all the muscle you need for both city commuting and highway cruising. Paired with a 6-Speed Shiftable Automatic transmission, you'll enjoy seamless gear changes and a smooth, responsive drive that makes every journey a pleasure.

Step inside and you'll be greeted by a spacious and inviting interior adorned with plush gray cloth seats. The thoughtful design and high-quality materials provide a comfortable and enjoyable driving environment, whether you're tackling your daily commute or embarking on a long road trip. The ergonomically designed seats offer excellent support, ensuring that you and your passengers remain comfortable, even on the longest drives.

One of the standout features of the 2016 Hyundai SANTA FE Sport is its remarkable value. Awarded Kelley Blue Book's 5-Year Cost to Own: Best Brand, this SUV is not only affordable to purchase but also economical to maintain. You can drive with confidence knowing that you're investing in a vehicle renowned for its low ownership costs and exceptional reliability.

In terms of performance, the SANTA FE Sport's 2.4L engine offers a perfect blend of power and efficiency. You'll appreciate the responsive acceleration and the smooth, quiet ride, making every drive a delightful experience. The 6-Speed Shiftable Automatic transmission allows you to take control when you want a more engaged driving experience, or you can simply relax and let the vehicle handle the shifting for you.

Safety and convenience are paramount in the 2016 Hyundai SANTA FE Sport. This SUV is equipped with a range of features designed to keep you and your loved ones safe on the road. From its advanced airbag system to its sturdy construction, you can drive with peace of mind knowing that you're protected.

The exterior design of the SANTA FE Sport is both stylish and functional. Its sleek lines and bold stance make a statement on the road, while the thoughtful design details enhance aerodynamics and fuel efficiency. This vehicle is as beautiful as it is practical, making it a perfect choice for those who want to stand out from the crowd.

In summary, the 2016 Hyundai SANTA FE Sport 2.4L is an outstanding choice for anyone seeking a reliable, stylish, and efficient SUV. With its impressive performance, comfortable interior, and award-winning value, this vehicle is sure to exceed your expectations. Don't miss the opportunity to own this exceptional SUV – come in for a test drive today and experience the 2016 Hyundai SANTA FE Sport for yourself!

## Installed Options

### Interior

- Air filtration- Front air conditioning- Rear vents: second row
- Armrests: rear center folding with storage- Door trim: cloth- Cargo area light
- Cruise control- Multi-function remote: keyless entry- Power outlet(s): 12V cargo area
- Power steering- Steering wheel: tilt and telescopic- Clock- Digital odometer
- External temperature display- Multi-function display- Trip odometer
- Front seat type: bucket - Rear seat folding: flat- Rear seat type: 40-20-40 split bench
- Upholstery: cloth

### Exterior

- Door handle color: chrome- Front bumper color: body-color- Mirror color: body-color
- Rear spoiler: roofline- Daytime running lights- Side mirrors: heated
- Spare wheel type: steel- Tire Pressure Monitoring System- Wheels: aluminum alloy
- Front wipers: variable intermittent- Power windows- Rear privacy glass
- Rear wiper: intermittent- Solar-tinted glass: front- Window defogger: rear

Payments are "with approved credit". Some select cars can not be financed.

Schneck Motor Company

Schneck Motor Company

View this car on our website at [schneckmotorcompany.com/7318894](https://schneckmotorcompany.com/7318894)

Website: [schneckmotorcompany.com](https://schneckmotorcompany.com)

Phone: [901-870-6999](tel:901-870-6999)

Map: [1200 Commerce Drive, Plano, TX 75093](#)



