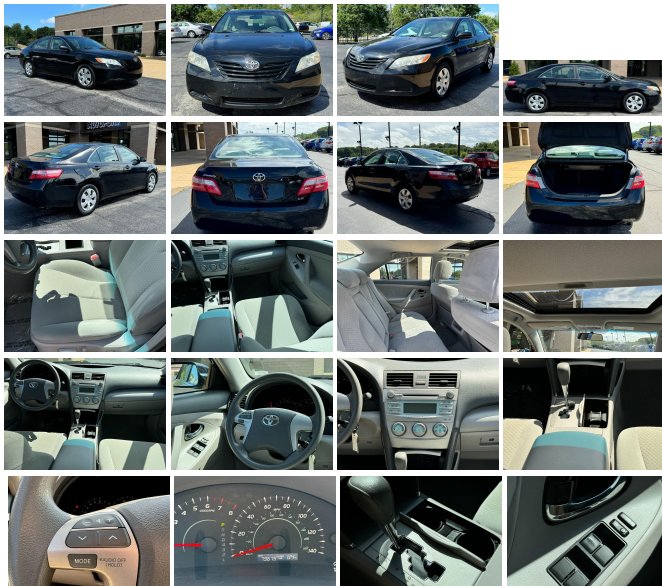


## 2009 Toyota Camry LE

View this car on our website at [autoportstl.com/7317864/ebrochure](http://autoportstl.com/7317864/ebrochure)



Our Price **\$11,800**

### Specifications:

<b>Year:</b>	2009
<b>VIN:</b>	4T4BE46K99R074759
<b>Make:</b>	Toyota
<b>Stock:</b>	GP24217
<b>Model/Trim:</b>	Camry LE
<b>Condition:</b>	Pre-Owned
<b>Body:</b>	Sedan
<b>Exterior:</b>	[202] Black
<b>Engine:</b>	2.4L I4 158hp 161ft. lbs.
<b>Interior:</b>	Ash Cloth
<b>Transmission:</b>	5-Speed Automatic
<b>Mileage:</b>	79,542
<b>Drivetrain:</b>	Front Wheel Drive
<b>Economy:</b>	City 21 / Highway 31

BEST SELECTION OF  
LOW MILE  
GREAT VALUE  
IMPORTS IN  
ST. LOUIS!

< PROUD TO  
PRESENT THIS >

<< 2009 TOYOTA  
CAMRY LE >>

*WHAT DO YOU WANT TO  
KNOW:*

<> WE WANT TO EARN YOUR  
BUSINESS!

<> SALE PRICED FOR A FAST  
SALE!

<> NEW CAR TRADE IN

<> LOW MILES!

<> CLEAN CARFAX HISTORY

<> HAS NEVER BEEN IN  
ACCIDENT

<> SERVICE RECORDS

<> MUCH, MUCH MORE

Step into the world of reliability and comfort with our stunning 2009 Toyota Camry LE, a true gem that combines timeless elegance with an impressive suite of features. With a modest 79,542 miles on the odometer, this Camry is just hitting its stride, ready to deliver the dependable and enjoyable driving experience that Toyota is renowned for.

The sleek black exterior of this Camry exudes sophistication and style, making it a head-turner on any road. Its classic silhouette is a testament to Toyota's commitment to

enduring design, ensuring that you'll look good today, tomorrow, and years from now. The gray cloth interior invites you in, offering a spacious and comfortable cabin that's perfect for both daily commutes and long road trips. The seats provide ample support, and the well-thought-out layout puts all controls within easy reach, making your drive as relaxing as possible.

Under the hood lies the heart of this dependable machine: a robust 2.4L I4 engine with 158hp and 161ft. lbs. of torque. This powerplant offers a perfect balance of performance and efficiency, ensuring that you have the power you need when you need it, all while maintaining excellent fuel economy. Paired with a smooth-shifting 5-Speed Automatic transmission, this Camry delivers a driving experience that is both responsive and serene.

The 2009 Toyota Camry LE isn't just about looks and performance; it's also a champion of value and dependability. This model has

earned its stripes, boasting accolades such as being one of Edmunds's Top 10 Best-Selling Vehicles and one of the Top 10 Least Expensive Midsize Sedans. These awards are a testament to the Camry's popularity and its ability to deliver quality without breaking the bank.

Furthermore, the Camry's reputation for reliability is unparalleled, as evidenced by its recognition in J.D. Power and Associates's Vehicle Dependability Study (VDS), where it was named one of the Top Models. This is a car that's built to last and will provide you with peace of mind mile after mile.

Recognized by Kelley Blue Book's Brand Image Awards as the Best Value Brand and Most Family-Friendly Brand, the Toyota Camry LE is the smart choice for those who seek a vehicle that's both economical and accommodating. It's the perfect family sedan that doesn't compromise on value, ensuring that you get the most bang for your buck.

This 2000 Toyota Camry LE is

THIS 2009 Toyota Camry LE is more than just a car; it's a reliable companion that will be by your side through thick and thin. It's a vehicle that has been loved by many and is ready to be cherished by its next owner. Don't miss your chance to own a piece of Toyota's legacy of excellence. Visit us today, take it for a test drive, and experience firsthand why the Camry continues to be a favorite among drivers worldwide. Let this Camry be the start of your next great journey!

*WHAT DO YOU WANT TO GO:*

<> MISSOURI STATE SAFETY INSPECTED

<> FEDERAL EMISSION TEST COMPLETED

<> READY FOR IMMEDIATE DELIVERY

<> CREDIT UNION FINANCING AVAILABLE

<> LOW COMPETITIVE RATES FOR ALL CREDIT SITUATIONS

<> COMPREHENSIVE EXTENDED WARRANTY AVAILABLE

<> WE CAN ASSIST WITH NATIONWIDE SHIPPING

*<> DON'T DELAY >> CALL,  
TEXT, EMAIL, OR FACEBOOK  
TODAY!!*

<> TEXT OR CALL  
GORDON FOR A QUICK  
RESPONSE 314-229-8205

<> TEXT OR CALL TODAY TO  
SET AN APPOINTMENT FOR A  
PERSONAL VIEWING & TEST  
RIDE

---

2009 Toyota Camry LE

AutoPort - 636-394-0500 - View this car on our website at [autoportstl.com/7317864/ebrochure](http://autoportstl.com/7317864/ebrochure)

## Vehicle History Report : as Of 07/27/2024

**CARFAX**

Snapshot

**2009 TOYOTA CAMRY LE**



No accidents or damage reported to CARFAX



**30** Service history records



**3** Previous owners



Types of owners: Personal lease  
Personal



Last owned in Ohio



**79,542** Last reported odometer reading



**FREE CARFAX Report**

See the full CARFAX Report for additional information

\*carfax Snapshot is a reflection of available information on the date the report was pulled. carfax is constantly being updated with new information and is subject to change at any time.

## Our Location :



2009 Toyota Camry LE

AutoPort - 636-394-0500 - View this car on our website at [autoportstl.com/7317864/ebrochure](http://autoportstl.com/7317864/ebrochure)

## Installed Options

### Interior

- Air filtration- Front air conditioning- Armrests: rear center folding with storage
- Cargo area light- Cruise control- Multi-function remote: keyless entry
- Power outlet(s): 12V front- Power steering: variable/speed-proportional
- Steering wheel: tilt and telescopic- External temperature display
- Driver seat power adjustments: 8- Front seat type: bucket- Rear seat folding: split
- Rear seat type: bench- Upholstery: cloth

### Exterior

- Mirror color: body-color- Daytime running lights- Side mirror adjustments: power
- Spare wheel type: steel- Tire Pressure Monitoring System- Wheels: steel
- Power windows- Window defogger: rear

<p> <strong><em><font size="2">We offer comprehensive extended warranties.&nbsp; Please call for prices</font></em></strong></p> <p> <strong><em><font size="2">We offer competitive financing.&nbsp; Please call&nbsp;to apply</font></em></strong></p>

---

AutoPort

[autoportstl.com](http://autoportstl.com)

636-394-0500

16360 Truman Rd.

Ellisville, MO 63011

© 2024 AutoRevo - All rights reserved. - Powered by [AutoRevo](#)