

2024 Jeep Wrangler Unlimited Sport 4X4 HARD TOP,DUPONT KEVLAR,LIFT,LED'S

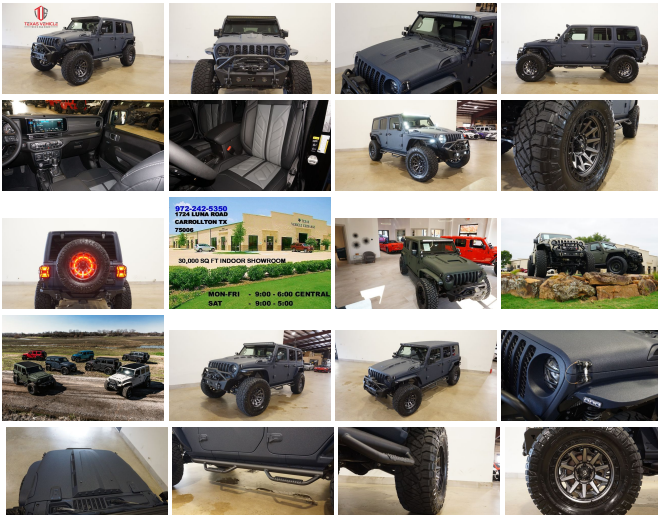
View this car on our website at tveauto.com/7316799/ebrochure



Our Price **\$92,900**

Specifications:

Year:	2024
VIN:	1C4PJXDG4RW201700
Make:	Jeep
Stock:	201700
Model/Trim:	Wrangler Unlimited Sport 4X4 HARD TOP,DUPONT KEVLAR,LIFT,LED'S
Condition:	Pre-Owned
Body:	SUV
Exterior:	Blue
Engine:	3.6L V6 285hp 260ft. lbs.
Interior:	Black Leather
Transmission:	8-Speed Shifttable Automatic
Mileage:	61
Drivetrain:	4 Wheel Drive
Economy:	City 16 / Highway 22



NATION WIDE FINANCING

SUBMIT CREDIT APP [WWW.TVEAUTO.COM](https://www.tveauto.com)

OR CALL 972-242-5350

"FERRARI NART BLUE EDITION"

CUSTOM BUILT **KEVLAR** 2024 JEEP
WRANGLER JL UNLIMITED SPORT 4X4
WITH 24S PACKAGE

UPGRADES INCLUDE:

- * FERRARI NART BLUE KEVLAR COATING WITH ANTHRACITE ACCENTS
- * 3 PIECE HARD TOP
- * CUSTOM ALEA BLACK & GRAY LEATHER WITH SILVER STITCHING
- * FACTORY REMOTE START
- * REMOTE PROXIMITY KEYLESS ENTRY
- * CONVENIENCE GROUP
- * TECHNOLOGY GROUP
- * SAFETY GROUP
- * FACTORY 12.3 INCH TOUCH SCREEN DISPLAY WITH HD AM/FM/SIRIUS STEREO & ALPINE PREMIUM AUDIO SYSTEM
- * FACTORY BACK-UP CAMERA
- * U-CONNECT
- * FAB FOURS STUBBY FRONT BUMPER WITH LED FOGLIGHTS
- * FRONT D-RINGS & ISOLATORS (ANTHRACITE)
- * SMITTYBILT NEW GEN 3 "X20" 10,000 LB WATERPROOF AND WIRELESS CONTROL WINCH WITH SYNTHETIC ROPE
- * FACTOR 55 PROLINK (BLACK)
- * FACTORY MESH GRILLE PAINTED (ANTHRACITE)
- * LED HEADLIGHTS
- * RUGGED RIDGE BLACK HEADLIGHT GUARDS
- * CUSTOM JL HEAT EXPULSION HOOD
- * DRAKE OFF ROAD HOOD LATCHES
- * DV8 OFF ROAD JL SLIM STEEL FENDER FLARES
- * DV8 OFF ROAD FRONT & REAR INNER FENDERS
- * TERAFLEX 2.5" SUSPENSION LIFT KIT WITH TFRAXI FX SPORT CONTROL ARMS &

TERAFLEX FALCON SHOCKS

- * TERAFLEX FALCON STABILIZER KIT
- * VOSWITCH 6 CHANNEL CUSTOM INTEGRATED SWITCH PANEL
- * 50" LED LIGHT BAR AND 4 RIGID INDUSTRIES DUALY D2 LED PILLAR LIGHTS
- * SMITTYBILT BLACK TUBULAR STEPS
- * MOPAR BLACK FUEL DOOR
- * EVOLUTION 2 BLACK LED TAIL LIGHTS
- * RUGGED RIDGE BLACK TAIL LIGHT GUARDS
- * RUGGED RIDGE SPARTACUS HD HINGE KIT
- * RUGGED RIDGE LED THIRD BRAKE LIGHT RING
- * DV8 OFF ROAD FS-15 REAR BUMPER WITH REAR PARK DISTANCE SENSORS
- * REAR D-RINGS & ISOLATORS (ANTHRACITE)
- * ALL WEATHER FLOOR MATS
- * TAZER JL PROGRAMMER WITH SPEEDOMETER CALIBRATION
- * 20" FUEL MATTE ANTHRACITE W/BLACK RING "COVERT" WHEELS
- * BRAND NEW NITTO RIDGE GRAPPLER 37X13.50R/20 TIRES

WE BUILD EVERY JEEP WITH PRIDE! DO NOT HESITATE TO CALL US WITH THIS JEEP BUILD. WE CAN MAKE CHANGES TO THIS JEEP BUILD OR CUSTOM BUILD ANY JEEP TO YOUR PREFERENCE. GIVE US A CALL @ 972-242-5350 OR STOP BY FOR A TEST DRIVE. 1724 LUNA RD IN CARROLLTON - 2 MILES NORTH OF 635.

Vehicle History Report : as Of 07/20/2024



Snapshot

2024 JEEP WRANGLER SPORT S



No accidents or damage reported to CARFAX



Well maintained vehicle



CARFAX 1-Owner vehicle



Personal vehicle



Last owned in Texas



10 Last reported odometer reading

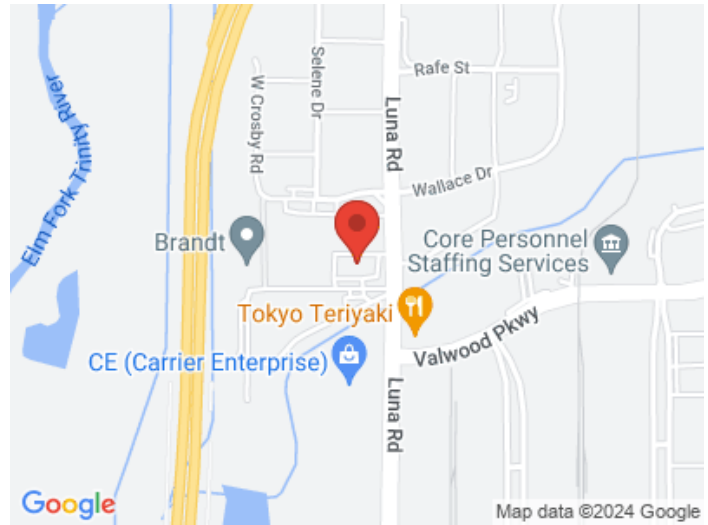


FREE CARFAX Report

See the full CARFAX Report for additional information

*carfax Snapshot is a reflection of available information on the date the report was pulled. carfax is constantly being updated with new information and is subject to change at any time.

Our Location :



Installed Options

Interior

- Front air conditioning- Rear vents: second row- Floor mat material: carpet
- Floor mats: front- Steering wheel trim: leatherette- Adaptive cruise control
- Adaptive stop and go cruise control: semi-automatic- Ambient lighting- Cargo area light
- Footwell lights- Multi-function remote: keyless entry- Power outlet(s): 12V cargo area
- Power steering: variable/speed-proportional- Push-button start
- Steering wheel: tilt and telescopic- Tool kit- Clock- Compass- Digital odometer
- External temperature display- Multi-function display- Trip odometer
- Front seat type: bucket- Rear seat folding: split- Rear seat type: 60-40 split bench
- Upholstery: cloth- Upholstery accents: contrast stitching

Exterior

- Exterior entry lights: approach lamps- Front fog lights- Side mirrors: heated
- Removable roof: soft top- Spare tire size: full-size matching
- Spare wheel type: aluminum alloy- Tire Pressure Monitoring System
- Wheels: painted aluminum alloy- Front wipers: variable intermittent
- Power windows: safety reverse- Solar-tinted glass: front- Tinted glass: windshield

Option Packages

Factory Installed Packages

Black 3-Piece Hard Top

Includes 3-piece black hard top, freedom panel storage bag, rear window defroster, and rear window wiper and washer. **\$1,695**

Convenience Group

Includes 2-door passive entry, air conditioning w/auto temp control, air filtering, cluster 7.0" TFT color display, heated front seats, heated steering wheel, remote start system, SiriusXM satellite radio, and universal garage door opener. **\$1,995**

Quick Order Package 24S

Includes vehicle with standard equipment, 3.6L engine, 8-speed automatic transmission, adaptive cruise control w/ stop, anti-lock 4-wheel disc brakes, Dana M200 rear axle, and Selec-Speed Control.

Safety Group

Includes auto high beam headlamp control, blind spot and cross path detection, injection molded black rear bumper, LED taillamps, and ParkSense rear park assist system. **\$1,395**

Technology Group

Includes 240-amp alternator and alpine premium audio system. **\$1,295**

Option Packages Total

\$6,380

Texas Vehicle Exchange

tveauto.com

972-242-5350

1724 Luna Road

Carrollton, TX 75006

© 2024 AutoRevo - All rights reserved. - Powered by AutoRevo