

# 2024 Jeep Wrangler Unlimited Sport 4X4 SKY TOP,DUPONT KEVLAR,LIFT,LED'S

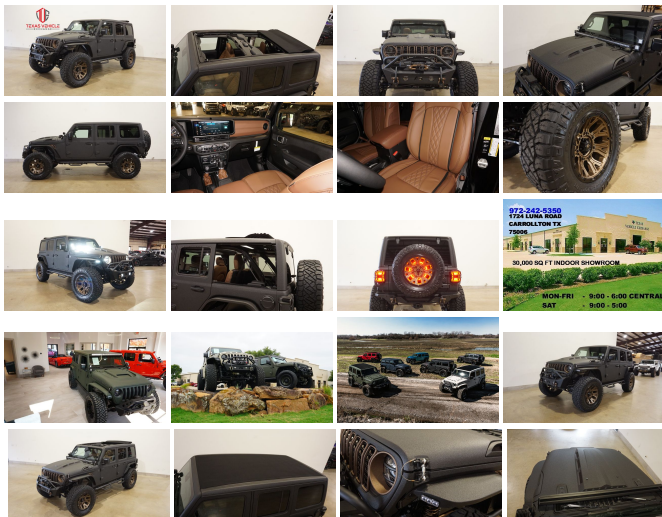
View this car on our website at [tveauto.com/7315144/ebrochure](https://tveauto.com/7315144/ebrochure)



Our Price **\$96,900**

## Specifications:

<b>Year:</b>	2024
<b>VIN:</b>	1C4PJXDG1RW201699
<b>Make:</b>	Jeep
<b>Stock:</b>	201699
<b>Model/Trim:</b>	Wrangler Unlimited Sport 4X4 SKY TOP,DUPONT KEVLAR,LIFT,LED'S
<b>Condition:</b>	Pre-Owned
<b>Body:</b>	SUV
<b>Exterior:</b>	Black
<b>Engine:</b>	3.6L V6 285hp 260ft. lbs.
<b>Interior:</b>	Brown Leather
<b>Transmission:</b>	8-Speed Shiftable Automatic
<b>Mileage:</b>	159
<b>Drivetrain:</b>	4 Wheel Drive
<b>Economy:</b>	City 16 / Highway 22



NATION WIDE FINANCING

SUBMIT CREDIT APP [WWW.TVEAUTO.COM](https://www.tveauto.com)

OR CALL 972-242-5350

**"RAPTOR BLACK EDITION"**

CUSTOM BUILT KEVLAR 2024 JEEP  
WRANGLER JL UNLIMITED SPORT 4X4  
WITH 24S PACKAGE

**UPGRADES INCLUDE:**

- \* RAPTOR BLACK KEVLAR COATING WITH KING RANCH BROWN ACCENTS
- \* SKY ONE-TOUCH POWER TOP WITH REMOVABLE REAR QUARTER WINDOWS
- \* CUSTOM ALEA BROWN LEATHER WITH TAN STITCHING
- \* FACTORY REMOTE START
- \* REMOTE PROXIMITY KEYLESS ENTRY
- \* CONVENIENCE GROUP
- \* TECHNOLOGY GROUP
- \* SAFETY GROUP
- \* FACTORY 12.3 INCH TOUCH SCREEN DISPLAY WITH HD AM/FM/SIRIUS STEREO & ALPINE PREMIUM AUDIO SYSTEM
- \* FACTORY BACK-UP CAMERA
- \* U-CONNECT
- \* FAB FOURS STUBBY FRONT BUMPER WITH LED FOGLIGHTS
- \* FRONT D-RINGS & ISOLATORS (KING RANCH BROWN)
- \* SMITTYBILT NEW GEN 3 "X20" 10,000 LB WATERPROOF AND WIRELESS CONTROL WINCH WITH SYNTHETIC ROPE
- \* FACTOR 55 PROLINK (BLACK)
- \* FACTORY MESH GRILLE PAINTED KING RANCH BROWN
- \* LED HEADLIGHTS
- \* RUGGED RIDGE BLACK HEADLIGHT GUARDS
- \* CUSTOM JL HEAT EXPULSION HOOD
- \* DRAKE OFF ROAD HOOD LATCHES
- \* DV8 OFF ROAD JL SLIM STEEL FENDER FLARES
- \* DV8 OFF ROAD FRONT & REAR INNER FENDERS
- \* TFRAFI FX 2.5" SUSPENSION LIFT KIT

TERAFLEX SPORT CONTROL ARMS &  
TERAFLEX FALCON SHOCKS

\* TERAFLEX FALCON STABILIZER KIT

\* SUSPENSION PARTS PAINTED (KING  
RANCH BROWN)

\* VOSWITCH 6 CHANNEL CUSTOM  
INTEGRATED SWITCH PANEL

\* 50" LED LIGHT BAR AND 4 RIGID  
INDUSTRIES DUALY D2 LED PILLAR  
LIGHTS

\* SMITTYBILT BLACK TUBULAR STEPS

\* MOPAR BLACK FUEL DOOR

\* EVOLUTION 2 BLACK LED TAIL LIGHTS

\* RUGGED RIDGE BLACK TAIL LIGHT  
GUARDS

\* RUGGED RIDGE SPARTACUS HD HINGE  
KIT

\* RUGGED RIDGE LED THIRD BRAKE LIGHT  
RING

\* DV8 OFF ROAD FS-15 REAR BUMPER  
WITH REAR PARK DISTANCE SENSORS

\* REAR D-RINGS & ISOLATORS (KING  
RANCH BROWN)

\* ALL WEATHER FLOOR MATS

\* TAZER JL PROGRAMMER WITH  
SPEEDOMETER CALIBRATION

\* 20" FUEL MATTE BRONZE WITH BLACK  
RING "TRACTION" WHEELS

\* BRAND NEW NITTO RIDGE GRAPPLER  
37X13.50R/20 TIRES

**WE BUILD EVERY JEEP WITH PRIDE! DO  
NOT HESITATE TO CALL US WITH THIS  
JEEP BUILD. WE CAN MAKE CHANGES TO  
THIS JEEP BUILD OR CUSTOM BUILD ANY  
JEEP TO YOUR PREFERENCE. GIVE US A  
CALL @ 972-242-5350 OR STOP BY FOR A**

TEST DRIVE. 1724 LUNA RD IN  
CARROLLTON - 2 MILES NORTH OF 635.

2024 Jeep Wrangler Unlimited Sport 4X4 SKY TOP,DUPONT KEVLAR,LIFT,LED'S  
Texas Vehicle Exchange - 972-242-5350 - View this car on our website at [veauto.com/7315144/ebrochure](http://veauto.com/7315144/ebrochure)

### Vehicle History Report : as Of 07/20/2024

**CARFAX**

Snapshot

**2024 JEEP WRANGLER SPORT S**



No accidents or damage reported to CARFAX



Well maintained vehicle



CARFAX 1-Owner vehicle



Personal vehicle



Last owned in Texas



10 Last reported odometer reading



**FREE CARFAX Report**

See the full CARFAX Report for additional information

\*carfax Snapshot is a reflection of available information on the date the report was pulled. carfax is constantly being updated with new information and is subject to change at any time.

### Our Location :



2024 Jeep Wrangler Unlimited Sport 4X4 SKY TOP,DUPONT KEVLAR,LIFT,LED'S  
Texas Vehicle Exchange - 972-242-5350 - View this car on our website at [veauto.com/7315144/ebrochure](http://veauto.com/7315144/ebrochure)

## Installed Options

### Interior

- Front air conditioning- Rear vents: second row- Floor mat material: carpet
- Floor mats: front- Steering wheel trim: leatherette- Adaptive cruise control
- Adaptive stop and go cruise control: semi-automatic- Ambient lighting- Cargo area light
- Footwell lights- Multi-function remote: keyless entry- Power outlet(s): 12V cargo area
- Power steering: variable/speed-proportional- Push-button start
- Steering wheel: tilt and telescopic- Tool kit- Clock- Compass- Digital odometer
- External temperature display- Multi-function display- Trip odometer
- Front seat type: bucket- Rear seat folding: split- Rear seat type: 60-40 split bench
- Upholstery: cloth- Upholstery accents: contrast stitching

### Exterior

- Exterior entry lights: approach lamps- Front fog lights- Side mirrors: heated
- Removable roof: soft top- Spare tire size: full-size matching
- Spare wheel type: aluminum alloy- Tire Pressure Monitoring System
- Wheels: painted aluminum alloy- Front wipers: variable intermittent
- Power windows: safety reverse- Solar-tinted glass: front- Tinted glass: windshield

## Option Packages

### Factory Installed Packages

#### Sky One-Touch Power Top

Includes power-retractable canvas roof panel, removable rear quarter windows, quarter window storage bag, rear window defroster, and rear window wiper and washer. Removal of the hard top is not recommended by the manufacturer.

\$3,995

#### Convenience Group

Includes 2-door passive entry, air conditioning w/auto temp control, air filtering, cluster 7.0" TFT color display, heated front seats, heated steering wheel, remote start system, SiriusXM satellite radio, and universal garage door opener.

\$1,995

#### Quick Order Package 24S

Includes vehicle with standard equipment, 3.6L engine, 8-speed automatic transmission, adaptive cruise control w/ stop, anti-lock 4-wheel disc brakes, Dana M200 rear axle, and Selec-Speed Control.

#### Safety Group

Includes auto high beam headlamp control, blind spot and cross path detection, injection molded black rear bumper, LED taillamps, and ParkSense rear park assist system.

\$1,395

#### Technology Group

Includes 240-amp alternator and alpine premium audio system.

\$1,295

#### Option Packages Total

\$8,680

Texas Vehicle Exchange

[tveauto.com](http://tveauto.com)

972-242-5350

1724 Luna Road

Carrollton, TX 75006

© 2024 AutoRevo - All rights reserved. - Powered by AutoRevo