

2016 Porsche Cayenne S E-Hybrid

View this car on our website at autosourcehawaii.com/7314273/ebrochure

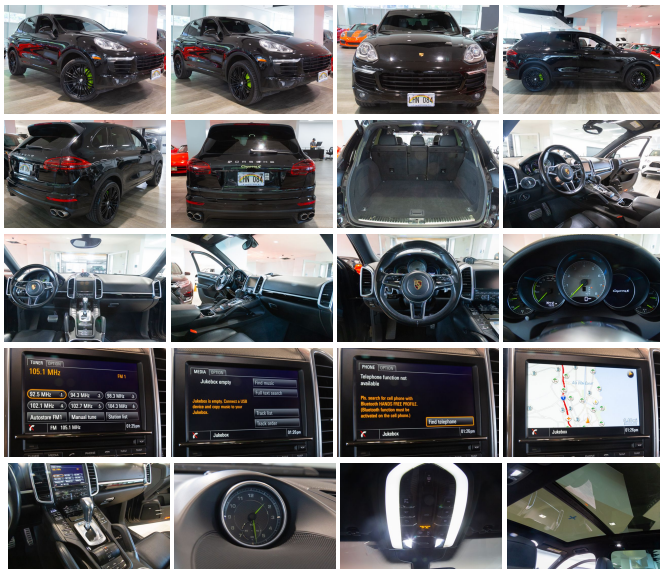


Our Price **\$34,995**

Retail Value **\$39,995**

Specifications:

Year:	2016
VIN:	WP1AE2A20GLA63415
Make:	Porsche
Stock:	A000190
Model/Trim:	Cayenne S E-Hybrid
Condition:	Pre-Owned
Body:	SUV
Exterior:	Black
Engine:	3.0L Plug-in Hybrid Supercharged V6 416hp 435ft. lbs.
Interior:	Black Leather
Transmission:	8-Speed Shifttable Automatic
Mileage:	39,425
Drivetrain:	All Wheel Drive
Economy:	City 48 / Highway 46



Step into the realm of luxury and efficiency with the enthralling 2016 Porsche Cayenne S E-Hybrid, a vehicle that seamlessly blends the thrill of sports car performance with the practicality and environmental consciousness of a hybrid. With a mere 39,425 miles on the odometer, this exquisite machine is poised to deliver an exhilarating driving experience that only a Porsche can offer.

Coated in a timeless black exterior, this Cayenne S E-Hybrid exudes sophistication and power from every angle. The sleek body is accented by approach lamps that welcome you upon entry, LED daytime running lights that enhance visibility and style, and a tastefully designed rear spoiler that hints at the vehicle's sporty nature. The body-color mirrors and front bumper harmonize with the quad-tip exhaust that not only looks impressive but also produces a sound that is music to the ears of automotive enthusiasts.

Step inside the cabin and you'll be enveloped in a world of black luxury. The interior is a sanctuary of comfort and advanced technology, designed to cater to your every need. The 8-speed shifttable automatic transmission ensures smooth and responsive shifts, making every journey as enjoyable as the destination.

Under the hood lies a marvel of engineering—the 3.0L Plug-in Hybrid Supercharged V6 engine. With 416 horsepower and 435 ft-lbs of torque at your disposal, this Cayenne S E-Hybrid delivers an electrifying performance that is both dynamic and environmentally responsible. The fusion of electric and gasoline power not only reduces emissions but also provides an invigorating boost that will leave you breathless.

The Porsche Cayenne S E-Hybrid comes equipped with a plethora of manufacturer options and packages that elevate your driving experience. The wireless data link with Bluetooth connectivity, hands-free phone call integration, and a hard drive navigation system ensure you're always connected and on the right path. The 7-inch infotainment screen is your command center for entertainment, featuring 10 speakers, speed-sensitive volume control, SiriusXM satellite radio, and an MP3 Playback In-Dash CD to immerse you in crystal-clear sound.

This vehicle isn't just a joy to drive; it's also an award-winning masterpiece. Recognized by Edmunds as one of the Top Recommended SUVs, lauded by J.D. Power and Associates in their APEAL Study as one of the Top Models in its Segment, and celebrated by Kelley Blue Book with accolades including 10 Best Luxury SUVs, Best Performance Luxury Brand, and Best Resale Value for Electric/Plug-in Vehicles—this Cayenne S E-Hybrid is a testament to Porsche's commitment to excellence.

Embrace the future of driving with the 2016 Porsche Cayenne S E-Hybrid, where performance, luxury, and sustainability converge. Don't miss your chance to own a piece of automotive prestige that will not only turn heads but also contribute to a greener planet. Visit us today to experience the power and grace of this exceptional SUV and take the first step towards redefining your driving experience.

2016 Porsche Cayenne S E-Hybrid

Autosource Hawaii - (808) 597-8522 - View this car on our website at autosourcehawaii.com/7314273/ebrochure

Vehicle History Report : as Of 06/27/2024



Snapshot

2016 PORSCHE CAYENNE S E-HYBRID



No accidents or damage reported to CARFAX



22 Service history records



5 Previous owners



Types of owners: Personal lease
Personal



Last owned in Hawaii



39,425 Last reported odometer reading



FREE CARFAX Report

See the full CARFAX Report for additional information

*carfax Snapshot is a reflection of available information on the date the report was pulled. carfax is constantly being updated with new information and is subject to change at any time.

Our Location :



2016 Porsche Cayenne S E-Hybrid

Autosource Hawaii - (808) 597-8522 - View this car on our website at autosourcehawaii.com/7314273/ebrochure

Installed Options

Interior

- Air filtration: active charcoal- Front air conditioning: automatic climate control
- Front air conditioning zones: dual- Humidity/dewpoint sensors- Rear vents: second row
- Center console trim: leather- Dash trim: leather- Door trim: leather
- Floor mat material: carpet- Floor mats: front- Interior accents: leather
- Shift knob trim: alloy- Steering wheel trim: leather- Cargo area light
- Cargo cover: retractable- Cruise control- Memorized settings: 2 driver
- Multi-function remote: keyless entry- Power outlet(s): 12V front
- Power steering: variable/speed-proportional- Steering wheel: tilt and telescopic
- Touch-sensitive controls- Universal remote transmitter: garage door opener- Clock
- Compass- Digital odometer- External temperature display- Multi-function display
- Trip odometer- Driver seat power adjustments: 8- Front seat type: bucket
- Passenger seat power adjustments: 8- Rear seat folding: split
- Rear seat type: 40-20-40 split bench - Upholstery: leather-trimmed

Exterior

- Exhaust: quad tip- Front bumper color: body-color- Mirror color: body-color
- Rear spoiler: lip- Daytime running lights: LED- Exterior entry lights: approach lamps
- Front fog lights- Taillights: LED- Side mirror adjustments: power- Side mirrors: heated
- Spare tire kit: inflator kit- Tire Pressure Monitoring System- Wheels: aluminum alloy
- Front wipers: rain sensing- Heated windshield washer jets- Power windows
- Rear privacy glass- Rear wiper: intermittent- Tinted glass- Window defogger: rear

Autosource Hawaii

autosourcehawaii.com

(808) 597-8522

1488 Kapiolani Blvd

Honolulu, HI 96814

© 2024 AutoRevo - All rights reserved. - Powered by AutoRevo