

# 2024 Ram 1500 TRX 4X4 DUPONT KEVLAR,LIFTED,BUMPERS,LED'S,20'S

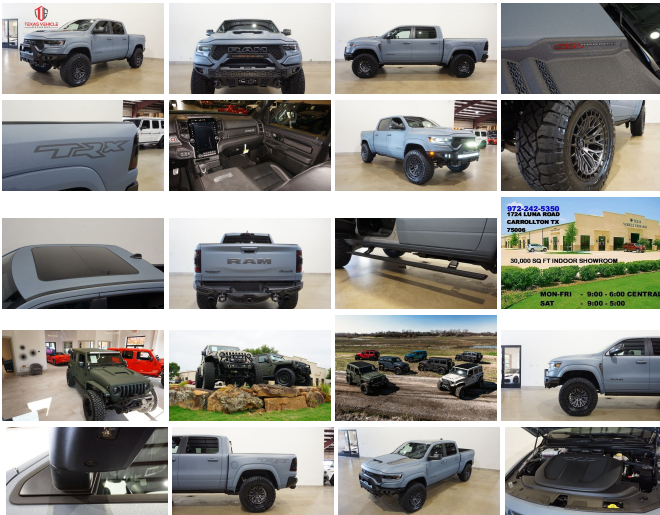
View this car on our website at [tveauto.com/7313554/ebrochure](https://tveauto.com/7313554/ebrochure)



Our Price **\$154,900**

## Specifications:

<b>Year:</b>	2024
<b>VIN:</b>	1C6SRFU91RN135487
<b>Make:</b>	Ram
<b>Stock:</b>	135487
<b>Model/Trim:</b>	1500 TRX 4X4 DUPONT KEVLAR,LIFTED,BUMPERS,LED'S,20'S
<b>Condition:</b>	Pre-Owned
<b>Body:</b>	Pickup Truck
<b>Exterior:</b>	Blue
<b>Engine:</b>	HEMI 6.2L Supercharged V8 702hp 650ft. lbs.
<b>Interior:</b>	Black Leather
<b>Transmission:</b>	8-Speed Shiftable Automatic
<b>Mileage:</b>	866
<b>Drivetrain:</b>	All Wheel Drive



NATION WIDE FINANCING

SUBMIT CREDIT APP [WWW.TVEAUTO.COM](https://www.tveauto.com)

OR CALL 972-242-5350

2024 RAM 1500 TRX CREW CAB 4X4, 6.2L SUPERCHARGED HEMI V8 SRT ENGINE, 8 SPEED AUTOMATIC TRANSMISSION, ONLY 866 MILES, WINTER BLUE KEVLAR COATING WITH ANTHRACITE ACCENTS W/BLACK LEATHER INTERIOR, CARFAX REPORTS 1 OWNER NO ACCIDENTS, NON-SMOKER, TRX LEVEL 2 EQUIPMENT GROUP (\$10,995.00), REMOTE START, CUSTOM 2" LEVEL KIT, BODYGUARD FREEDOM SERIES BAJA FRONT BUMPER WITH 20" & 30" LED LIGHT BARS & 2 RIGID

INDUSTRIES DUALY D2 LED PILLAR LIGHTS, SMITTYBILT NEW GEN 3 "X20" 10,000 LB WATERPROOF AND WIRELESS CONTROL WINCH WITH SYNTHETIC ROPE, FACTOR 55 PROLINK (BLACK), FRONT D-RINGS & ISOLATORS (ANTHRACITE), FRONT & REAR PARK DISTANCE SENSORS, HEAD-UP DISPLAY, DUAL-PANE PANORAMIC SUNROOF, 12.0" TOUCH SCREEN NAVIGATION, BACK-UP CAMERA, 360 VIEW CAMERAS, POWER RETRACTABLE RUNNING BOARDS, POWER WINDOWS, POWER DOOR LOCKS, POWER FOLDING HEATED MIRRORS WITH TURN SIGNALS, BLIND SPOT CONTROL, HEATED TILT/TELESCOPE STEERING WHEEL WITH AUDIO & CRUISE CONTROLS, PADDLE SHIFTERS, DUAL POWER HEATED & COOLED FRONT SEATS WITH DRIVER 2 MEMORY POSITION, POWER ADJUSTABLE PEDALS, TRACTION CONTROL, HILL DESCENT CONTROL, TRX MODE, LAUNCH MODE, TRAILER BRAKE CONTROLLER, AUXILIARY SWITCHES, ICE COLD A/C, DUAL CLIMATE CONTROL, HARMAN/KARDON HD AM/FM/SIRIUS STEREO, U-CONNECT, SELF DIMMING REAR VIEW MIRROR, HOMELINK GARAGE CONTROLS, DUAL LIGHTED VANITY MIRRORS, REAR HEATED & COOLED SEATS, REAR A/C VENTS, POWER SLIDING REAR WINDOW, SPRAY IN BEDLINER, TINTED TAIL LIGHTS, BODYGUARD FREEDOM SERIES REAR BUMPER, REAR D-RINGS & ISOLATORS (ANTHRACITE), TOW PACKAGE WITH RECEIVER HITCH, RUBBER FLOOR MATS, OWNER'S MANUAL, 2 KEYS/2 REMOTES. 20" FUEL MATTE GUNMETAL W/BLACK RING "SIGMA" WHEELS, FRONT TIRES ARE NITTO RIDGE GRAPPLER 37X13.50R/20, REAR TIRES ARE NITTO RIDGE GRAPPLER 37X13.50R/20. RUNS AND DRIVES GREAT. GIVE US A CALL @ 972-242-5350 OR STOP BY FOR A TEST DRIVE. 1724 LUNA RD IN CARROLLTON - 2 MILES NORTH OF 635. CLICK ON CARFAX ICON TO VIEW A FULL REPORT AT NO COST TO YOU.

Vehicle History Report : as Of 07/27/2024



Snapshot

2024 RAM 1500 TRX



No accidents or damage reported to CARFAX



Well maintained vehicle



CARFAX 1-Owner vehicle



Personal vehicle



Last owned in Texas



10 Last reported odometer reading



**FREE CARFAX Report**

See the full CARFAX Report for additional information

\*carfax Snapshot is a reflection of available information on the date the report was pulled. carfax is constantly being updated with new information and is subject to change at any time.

Our Location :



## Installed Options

### Interior

- Air filtration- Front air conditioning: automatic climate control
- Front air conditioning zones: dual- Rear vents: second row
- Armrests: rear center folding with storage- Dash trim: alloy- Door trim: alloy
- Floor mat material: rubber/vinyl- Floor mats: front- Shift knob trim: alloy
- Steering wheel trim: leather- Ambient lighting- Capless fuel filler system- Cruise control
- Footwell lights- Multi-function remote: keyless entry- Power outlet(s): 115V front
- Power steering- Push-button start- Rearview mirror: auto-dimming- Remote engine start
- Steering wheel: tilt and telescopic- Clock- Compass- Customizable instrument cluster
- Digital odometer- External temperature display- Instrument cluster screen size: 12 in.
- Multi-function display- Powertrain hour meter- Trip odometer
- Front seat type: sport bucket - Rear seat folding: folds up
- Rear seat type: 60-40 split bench - Upholstery accents: cloth

### Exterior

- Active grille shutters- Exhaust: dual tip- Hood scoop- Pickup bed light
- Tailgate: lift assist- Clearance lights- Daytime running lights: LED
- Exterior entry lights: approach lamps- Front fog lights: LED- Taillights: LED
- Side mirror adjustments: power- Side mirrors: driver side auto-dimming
- Spare tire size: full-size matching- Spare wheel type: painted aluminum alloy
- Tire Pressure Monitoring System- Wheels: painted aluminum alloy
- Front wipers: variable intermittent- Laminated glass: acoustic windshield
- Pickup sliding rear window: power horizontal- Power windows: safety reverse
- Rear privacy glass- Solar-tinted glass

## Option Packages

### Factory Installed Packages

---

#### Dual-Pane Panoramic Sunroof

Includes dual-pane panoramic sunroof with power sliding glass front panel and fixed glass rear panel, power sunshade, and dual LED reading lamps. \$1,595

---

#### Quick Order Package 29Y

Includes vehicle with standard equipment.

---

#### TRX Level 2 Equipment Group

Includes body color door handles, LED bed lighting, LED CHMSL lamp, blind-spot monitoring with trailer coverage and rear cross path detection, ParkSense front and rear park assist system w/stop, surround vision camera system, rearview auto-dimming digital display mirror, rain-sensitive windshield wipers, rear window defroster, remote proximity keyless entry, remote tailgate release, Harman Kardon 19 speaker audio system with 900 watts and subwoofer, front heated and ventilated leather-trimmed bucket seats, rear heated, ventilated and recline 60/40 split folding seat, 8-way power adjustable front seats with power lumbar, 2-driver memory for driver seat, radio, exterior mirrors, and pedals, heated leather/suede flat-bottom steering wheel, power adjustable pedals, bright pedal kit, universal garage door opener, wireless charging pad, instrument panel LED ambient light pipe, front and rear door accent lighting, dual sun visors with illuminating vanity mirrors, full length upgraded floor console, rear underseat compartment storage, premium-wrapped instrument panel bezel, premium-wrapped driver and passenger assist handles, and trailer brake controller. \$10,995

---

#### Option Packages Total

\$12,590

Texas Vehicle Exchange

[tveauto.com](http://tveauto.com)

972-242-5350

1724 Luna Road

Carrollton, TX 75006

© 2024 AutoRevo - All rights reserved. - Powered by AutoRevo