

## 2015 GMC Sierra 1500 SLT

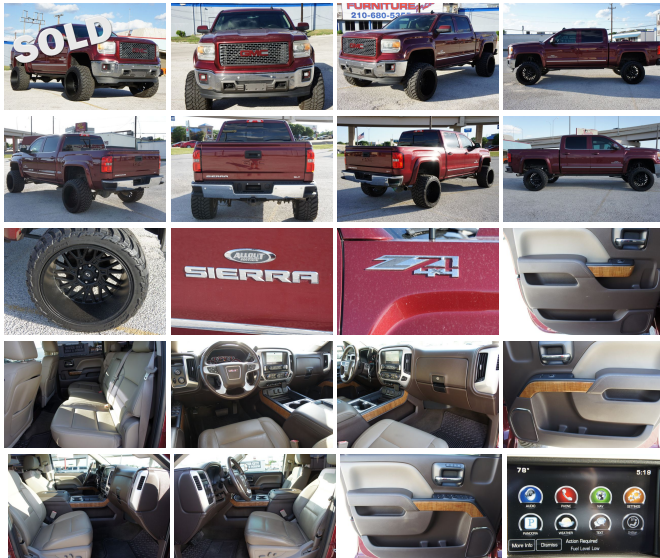
View this car on our website at [randlautogroup.com/7311839/ebrochure](http://randlautogroup.com/7311839/ebrochure)



Our Price **\$34,995**

### Specifications:

<b>Year:</b>	2015
<b>VIN:</b>	3GTU2VEC1FG476337
<b>Make:</b>	GMC
<b>Stock:</b>	P7120
<b>Model/Trim:</b>	Sierra 1500 SLT
<b>Condition:</b>	Pre-Owned
<b>Body:</b>	Pickup Truck
<b>Exterior:</b>	Slate Gray Metallic
<b>Engine:</b>	EcoTec3 5.3L V8 355hp 383ft. lbs.
<b>Interior:</b>	Cocoa/Dune Leather
<b>Transmission:</b>	6-Speed Shiftable Automatic w/Overdrive
<b>Mileage:</b>	84,933
<b>Drivetrain:</b>	4 Wheel Drive
<b>Economy:</b>	City 16 / Highway 22



Step into the realm of robust capability and unparalleled refinement with our 2015 GMC Sierra 1500 SLT, a truck that's not just a vehicle but a statement of strength and sophistication. With a modest 84,933 miles on the odometer, this Sierra is primed and ready to deliver the performance and comfort you demand.

Under the hood lies the heart of this mechanical marvel, an EcoTec3 5.3L V8 engine that pumps out an impressive 355 horsepower and 383 ft-lbs of torque. This powerplant is mated to a 6-Speed Shiftable Automatic transmission with Overdrive, ensuring a smooth and responsive driving experience whether you're cruising on the highway or towing your boat to the lake for a weekend getaway.

The accolades speak for themselves. The 2015 GMC Sierra 1500 SLT has been recognized by industry experts, earning an "Honorable Mention" in Edmunds's Best Retained Value and securing its place among the Top 10 Least Expensive Trucks and Top Recommended Trucks. What's more, it's a top model in its segment according to the J.D. Power and Associates's Automotive Performance, Execution, and Layout (APEAL) Study. And when it comes to future value, Kelley Blue Book has honored this Sierra with a spot in the Best Resale Value: Top 10 Models, as well as the Most Refined Brand award.

This isn't just a truck; it's a testament to GMC's commitment to excellence and a promise of lasting value. The Sierra 1500 SLT is designed to cater to those who demand more from their vehicles — more power, more elegance, and more confidence on the road.

As you step inside, you'll be enveloped in a cabin that redefines the concept of a truck interior. Luxurious appointments and thoughtful

ergonomics create an environment that's as comfortable as it is practical. The manufacturer's options and packages add layers of convenience and capability, ensuring that every drive is as enjoyable as it is purposeful.

Whether you're towing heavy loads or embarking on a cross-country adventure, this Sierra 1500 SLT won't just meet your expectations — it will exceed them. It's a truck that's been engineered to withstand the rigors of hard work while pampering its occupants with a level of luxury that's uncommon in such a rugged vehicle.

Imagine yourself behind the wheel, the roar of the V8 a harmonious backdrop to your day-to-day tasks. Feel the confidence that comes with driving a truck that's been lauded for its performance and value. This 2015 GMC Sierra 1500 SLT isn't just a wise investment; it's a partner that's ready to take on the world with you.

Don't miss the opportunity to own this paragon of power and prestige. Come in today and experience firsthand why the GMC Sierra 1500 SLT is a top choice for discerning drivers who demand the best. Your new journey awaits.

---

2015 GMC Sierra 1500 SLT

R&L Certified Auto Group - (210) 314-4774 - View this car on our website at [randlautogroup.com/7311839/ebrochure](http://randlautogroup.com/7311839/ebrochure)

#### Our Location :



---

2015 GMC Sierra 1500 SLT

R&L Certified Auto Group - (210) 314-4774 - View this car on our website at [randlautogroup.com/7311839/ebrochure](http://randlautogroup.com/7311839/ebrochure)

## Installed Options

### Interior

- Front air conditioning: automatic climate control- Front air conditioning zones: dual
- Floor mat material: rubber/vinyl- Floor mats: front- Steering wheel trim: leather
- Adjustable pedals: power- Cruise control- Memorized settings: 2 driver
- Multi-function remote: keyless entry- Power outlet(s): 115V- Power steering
- Rearview mirror: auto-dimming- Remote engine start- Steering wheel: tilt and telescopic
- Universal remote transmitter: garage door opener- Clock- Digital odometer
- External temperature display- Multi-function display- Trip odometer- Driver seat: heated
- Driver seat power adjustments: 10- Front seat type: 40-20-40 split bench
- Passenger seat: heated- Passenger seat power adjustments: 10
- Rear seat folding: folds up- Rear seat type: 60-40 split bench
- Upholstery: leather-trimmed

### Exterior

- Body side moldings: chrome- Door handle color: chrome- Front bumper color: chrome
- Mirror color: chrome- Pickup bed light- Tailgate: lift assist- Daytime running lights: LED
- Exterior entry lights: puddle lamps- Front fog lights- Side mirror adjustments: power
- Side mirrors: driver side auto-dimming- Tire Pressure Monitoring System
- Wheels: polished aluminum alloy- Front wipers: variable intermittent- Power windows
- Tinted glass- Window defogger: rear

R&L Certified Auto Group

[randlautogroup.com](http://randlautogroup.com)

(210) 314-4774

5631 NW LOOP 410

San Antonio, TX 78238

© 2024 AutoRevo - All rights reserved. - Powered by AutoRevo