

2020 Ford F-250 Super Duty XL 4x4

View this car on our website at texasmotorcars.com/7310520/ebrochure



Our Price **\$31,977**

Specifications:

Year:	2020
VIN:	1FT7W2B67LEC56525
Make:	Ford
Stock:	C56525
Model/Trim:	F-250 Super Duty XL 4x4
Condition:	Pre-Owned
Body:	Pickup Truck
Exterior:	[Z1] Oxford White
Engine:	6.2L Flex Fuel V8 385hp 430ft. lbs.
Interior:	Medium Earth Gray Vinyl
Transmission:	6-Speed Shiftable Automatic
Mileage:	106,467
Drivetrain:	4 Wheel Drive

2020 Ford F-250 Super Duty XL 4x4

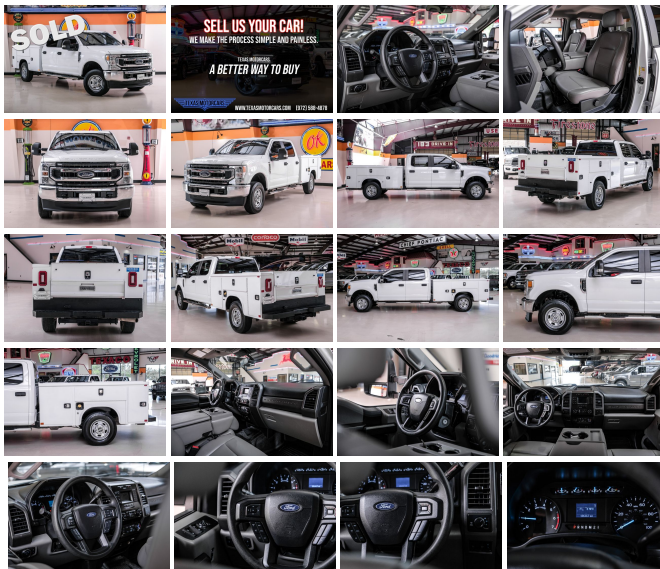
Step into the world of power and prestige with the 2020 Ford F-250 Super Duty XL 4x4, a truck that combines brute strength with refined technology and smart design. Under the hood lies the heart of this mechanical beast – a 6.2L Flex Fuel V8 engine that pumps out an impressive 385 horsepower and 430 foot-pounds of torque.

The 2020 Ford F-250 Super Duty XL doesn't just boast muscle; it's also outfitted with an array of manufacturer options and packages that elevate it above the ordinary. The Power Equipment Group transforms convenience into an art form, offering features like power door locks, remote keyless entry, power windows, and power, heated mirrors that make every interaction with your truck a pleasure. The XL Value Package adds a touch of class with chrome bumpers and hub covers, while cruise control enhances your driving experience.

For those who demand the utmost in capability, the 3.73 Electronic Locking Axle Ratio and Heavy Service Suspension Package prepare your F-250 to tackle the toughest of tasks without breaking a sweat. The Trailer Brake Controller and upfitter switches offer unparalleled control and customization for all your towing and accessory needs. The General servicebed attachment has 6 storage boxes to fill with your loadout, the roll out bed offers even more utility.

Connectivity and convenience are at your fingertips with FordPass Connect, enabling a Wi-Fi hotspot that keeps you and your passengers connected on the go. Bluetooth auxiliary audio input and wireless data link pair with smart device app functionality, allowing you to start your engine remotely and manage hands-free calls with ease.

Don't miss your chance to own a piece of award-winning performance.



Don't miss your chance to own a piece of award-winning performance and reliability – because when it comes to getting the job done, this Ford F-250 doesn't just meet expectations; it redefines them.

This vehicle has been reduced at below wholesale prices.

READY for work and play! Give us a call today!

Can't make it in? We offer shipping all over the United States. Ask your salesperson for shipping quotes.

Financing is available with competitive rates! Get pre-approved in no time by filling out a credit application on the finance section of our website! We also offer industry leading, highly rated warranty options so you can select one perfect for your specific vehicle needs.

All vehicles are priced for QUICK SALE. Call us today to see how easy it is to buy a vehicle at Texas Motorcars.

Texas Motorcars in Addison is a family owned and operated business. We are committed to delivering the best possible service!

Se habla Español!

Texas Motorcars "A Better Way To Buy!"

2020 Ford F-250 Super Duty XL 4x4

Texas Motorcars - 2146767311 - View this car on our website at [texasmotorcars.com/7310520/ebrochure](https://www.texasmotorcars.com/7310520/ebrochure)

Vehicle History Report : as Of 06/25/2024

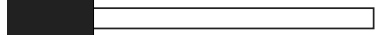


Snapshot

2020 FORD F-250 SUPER DUTY XL



Accident reported: minor damage



MINOR MODERATE SEVERE

14 Service history records



CARFAX 1-Owner vehicle



Commercial vehicle



106,467 Last reported odometer reading



FREE CARFAX Report

See the full CARFAX Report for additional information

*carfax Snapshot is a reflection of available information on the date the report was pulled. carfax is constantly being updated with new information and is subject to change at any time.

Our Location :



2020 Ford F-250 Super Duty XL 4x4

Texas Motorcars - 2146767311 - View this car on our website at texasmotorcars.com/7310520/ebrochure

Installed Options

Interior

- Air filtration- Front air conditioning- Power outlet(s): 12V front- Power steering
- Steering wheel: tilt and telescopic- Clock- Digital odometer- External temperature display
- Powertrain hour meter- Front seat type: 40-20-40 split bench - Rear seat folding: folds up
- Rear seat type: 60-40 split bench

Exterior

- Pickup bed light- Tailgate: lift assist- Towing mirrors- Spare wheel type: steel
- Tire Pressure Monitoring System- Wheels: painted steel
- Front wipers: variable intermittent- Solar-tinted glass: front

Option Packages

Factory Installed Packages

["6 In. Chrome Tubular Running Boards"]	\$695
---	-------

["Daytime Running Lamps"]	\$45
---------------------------	------

["Equipment Group 600A", "Includes vehicle with standard equipment. Package price is included in the base vehicle MSRP. Required for ordering purposes."]	
---	--

["Power Equipment Group", "Includes accessory delay, power door locks, power tailgate lock, remote keyless entry, SecuriLock passive anti-theft system, inclination/intrusion sensors, power front row windows with one-touch up and down, power second row windows, manually telescoping two-way folding trailer tow mirrors with power and heated glass, heated convex spotter mirror, integrated clearance lamps and turn signals, and upgraded door trim panel. Deletes passenger side lock cylinder."]	\$1,125
---	---------

["XL Value Package", "Includes chrome front and rear bumpers, bright chrome hub covers and center ornaments, and cruise control with steering wheel mounted controls."]	\$395
---	-------

["3.73 Electronic Locking Axle Ratio"]	\$390
--	-------

["Heavy Service Suspension Package", "Includes heavy service front springs (1 up upgrade above the spring computer selected as a consequence of options chosen. Not included if maximum springs have been computer selected as standard equipment). Note: May result in deterioration of ride quality. Vehicle ride height will increase with the addition of this package. Recommended only on vehicles which will permanently utilize aftermarket equipment."]	\$125
--	-------

["Trailer Brake Controller", "Includes TowCommand integrated trailer brake controller and smart trailer tow connector (compatible with select electric over hydraulic brakes. 7 and 4-way combo trailer tow socket and bracket deleted with 66D Pickup Box Delete.)"]	\$270
---	-------

["Upfitter Switches", "Includes six (6) switches located in overhead console."]	\$165
---	-------

Option Packages Total	\$3,210
-----------------------	---------

Addison, Texas 75001

© 2024 AutoRevo - All rights reserved. - Powered by AutoRevo