

2024 Jeep Wrangler Unlimited Rubicon 4X4 SKY TOP,LIFTED,BUMPERS,LED'S

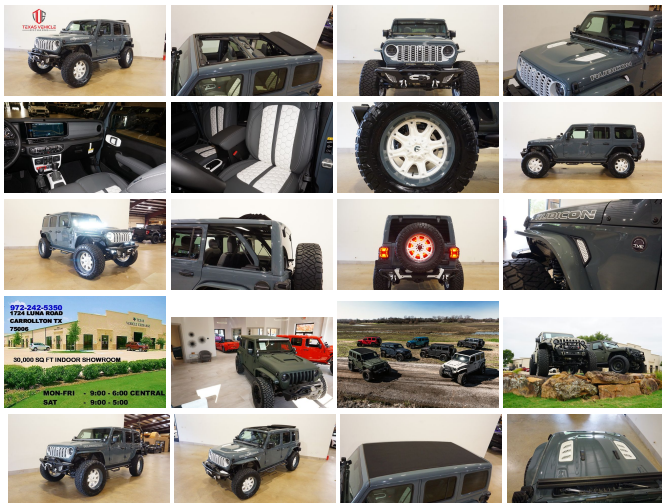
View this car on our website at tveauto.com/7308124/ebrochure



Our Price **\$99,900**

Specifications:

Year:	2024
VIN:	1C4PJXFG7RW201705
Make:	Jeep
Stock:	201705
Model/Trim:	Wrangler Unlimited Rubicon 4X4 SKY TOP,LIFTED,BUMPERS,LED'S
Condition:	Pre-Owned
Body:	SUV
Exterior:	[PDS] Anvil Clear Coat
Engine:	3.6L V6 285hp 260ft. lbs.
Interior:	White Leather
Transmission:	8-Speed Shifttable Automatic
Mileage:	88
Drivetrain:	4 Wheel Drive



NATION WIDE FINANCING

SUBMIT CREDIT APP [WWW.TVEAUTO.COM](https://www.tveauto.com)

OR CALL 972-242-5350

"ANVIL CLEAR COAT EDITION"

CUSTOM BUILT 2024 JEEP WRANGLER JL
UNLIMITED RUBICON 4X4 WITH 24R
PACKAGE

UPGRADES INCLUDE:

* ANVIL CLEAR COAT WITH BRIGHT WHITE

ANVIL CLEAR COAT WITH BRIGHT WHITE ACCENTS

- * SKY ONE-TOUCH POWER TOP WITH REMOVABLE REAR QUARTER WINDOWS
- * CUSTOM ALEA GRAY & WHITE LEATHER WITH WHITE STITCHING
- * FACTORY REMOTE START
- * REMOTE PROXIMITY KEYLESS ENTRY
- * CONVENIENCE GROUP
- * TECHNOLOGY GROUP
- * SAFETY GROUP
- * FORWARD FACING TRAIL CAM
- * FACTORY 12.3 INCH TOUCH SCREEN NAVIGATION WITH HD AM/FM/SIRIUS STEREO & ALPINE PREMIUM AUDIO SYSTEM
- * FACTORY BACK-UP CAMERA
- * U-CONNECT
- * SMITTYBILT APOLLO JL FRONT BUMPER WITH 2 MINI LED LIGHT BARS & LED FOGLIGHTS
- * FRONT D-RINGS & ISOLATORS (BRIGHT WHITE)
- * SMITTYBILT NEW GEN 3 "X20" 10,000 LB WATERPROOF AND WIRELESS CONTROL WINCH WITH SYNTHETIC ROPE
- * FACTOR 55 PROLINK (BLACK)
- * FACTORY MESH GRILLE PAINTED BRIGHT WHITE
- * FACTORY LED HEADLIGHTS
- * RUGGED RIDGE BLACK HEADLIGHT GUARDS
- * MOPAR 10TH ANNIVERSARY RUBICON POWER DOME HOOD
- * DV8 OFF ROAD JL SLIM STEEL FENDER FLARES (PAINTED TO MATCH)
- * DV8 OFF ROAD FRONT & REAR INNER

FENDERS

- * TERAFLX 2.5" SUSPENSION LIFT KIT WITH TERAFLX FALCON SERIES 3 SHOCKS & RESERVOIRS
- * TERAFLX FALCON STABILIZER KIT
- * SUSPENSION PARTS PAINTED (ANVIL PEARL COAT)
- * MOPAR AUXILIARY SWITCH BANK KIT
- * 50" LED LIGHT BAR AND 4 RIGID INDUSTRIES DUALY D2 LED PILLAR LIGHTS (LIGHT BRACKETS PAINTED TO MATCH)
- * SMITTYBILT BLACK TUBULAR STEPS
- * EVOLUTION 2 BLACK LED TAIL LIGHTS
- * RUGGED RIDGE BLACK TAIL LIGHT GUARDS
- * RUGGED RIDGE SPARTACUS HD HINGE KIT
- * RUGGED RIDGE LED THIRD BRAKE LIGHT RING
- * SMITTYBILT APOLLO JL REAR BUMPER WITH REAR PARK DISTANCE SENSORS
- * REAR D-RINGS & ISOLATORS (BRIGHT WHITE)
- * AFTERMARKET BLACK SERIES EXHAUST SYSTEM
- * ALL WEATHER FLOOR MATS
- * TAZER JL PROGRAMMER WITH SPEEDOMETER CALIBRATION
- * 20" FUEL BRIGHT WHITE & ANVIL "DARKSTAR" WHEELS
- * BRAND NEW NITTO RIDGE GRAPPLER 37X13.50R/20 TIRES

WE BUILD EVERY JEEP WITH PRIDE! DO NOT HESITATE TO CALL US WITH THIS JEEP BUILD. WE CAN MAKE CHANGES TO

THIS JEEP BUILD OR CUSTOM BUILD ANY JEEP TO YOUR PREFERENCE. GIVE US A CALL @ 972-242-5350 OR STOP BY FOR A TEST DRIVE. 1724 LUNA RD IN CARROLLTON - 2 MILES NORTH OF 635.

2024 Jeep Wrangler Unlimited Rubicon 4X4 SKY TOP,LIFTED,BUMPERS,LED'S
Texas Vehicle Exchange - 972-242-5350 - View this car on our website at veauto.com/7308124/ebrochure

Our Location :



2024 Jeep Wrangler Unlimited Rubicon 4X4 SKY TOP,LIFTED,BUMPERS,LED'S
Texas Vehicle Exchange - 972-242-5350 - View this car on our website at veauto.com/7308124/ebrochure

Installed Options

Interior

- Air filtration- Front air conditioning: automatic climate control- Rear vents: second row
- Floor mat material: carpet- Floor mats: front- Steering wheel trim: leatherette
- Adaptive cruise control- Adaptive stop and go cruise control: semi-automatic
- Ambient lighting- Cargo area light- Footwell lights- Power outlet(s): 115V rear
- Power steering: variable/speed-proportional- Push-button start
- Steering wheel: tilt and telescopic- Tool kit
- Universal remote transmitter: Homelink - garage door opener - Clock- Compass
- Customizable instrument cluster- Digital odometer- External temperature display
- Instrument cluster screen size: 7 in.- Multi-function display- Trip odometer
- Front seat type: bucket- Rear seat folding: split- Rear seat type: 60-40 split bench
- Upholstery: cloth- Upholstery accents: contrast stitching

Exterior

- Running boards- Daytime running lights: LED- Exterior entry lights: approach lamps
- Front fog lights: LED- Taillights: LED- Side mirrors: heated- Removable roof: soft top
- Spare tire size: full-size matching- Spare wheel type: aluminum alloy
- Tire Pressure Monitoring System- Wheels: aluminum alloy with painted accents
- Front wipers: variable intermittent- Power windows: safety reverse
- Solar-tinted glass: front- Tinted glass: windshield

Option Packages

Factory Installed Packages

Anvil Clear Coat Paint	\$595
Sky One-Touch Power Top Includes power-retractable canvas roof panel, removable rear quarter windows, quarter window storage bag, rear window defroster, and rear window wiper and washer. Removal of the hard top is not recommended by the manufacturer.	\$3,995
Convenience Group Includes heated front seats, heated steering wheel, and remote start system.	\$995
Quick Order Package 24R Includes vehicle with standard equipment, 3.6L V6 engine, and 8-speed automatic transmission, adaptive cruise control w/ stop, and Selec-Speed Control.	
Safety Group Includes auto high beam headlamp control, blind spot and cross path detection, and ParkSense rear park assist system.	\$1,295
Technology Group Includes UConnect 5 nav 12.3" disassociated touchscreen display w/ integrated voice command, 4G LTE wi-fi hot spot, Alpine premium audio system, Apple Carplay, Google Android Auto, HD radio, integrated off-road camera, rear view auto dim mirror, and SiriusXM 360L.	\$2,295
Option Packages Total	\$9,175

Texas Vehicle Exchange

tveauto.com

972-242-5350

1724 Luna Road

Carrollton, TX 75006

© 2024 AutoRevo - All rights reserved. - Powered by AutoRevo