

2014 Polaris RZR XP 1000 CUSTOM ROCKFORD FOSGATE PROMO RZR 4 SEATER

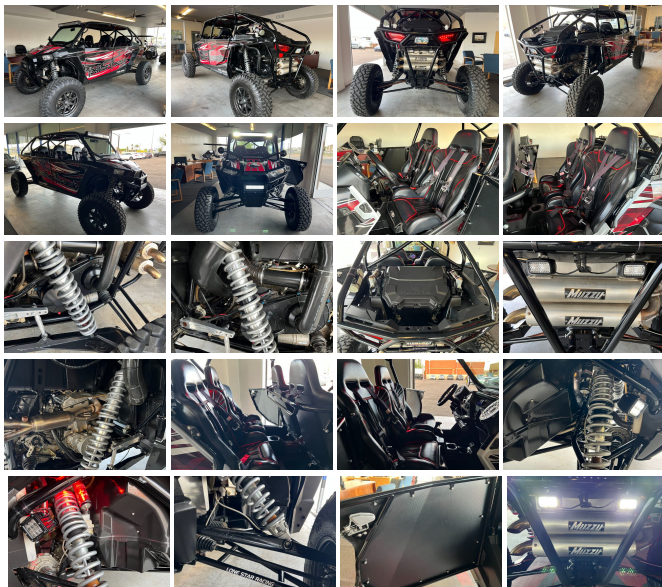
View this car on our website at auctiondirect2u.com/7306878/ebrochure



Our Price **\$19,800**

Specifications:

Year:	2014
VIN:	4XA6T1EA8EB922642
Make:	Polaris
Model/Trim:	RZR XP 1000 CUSTOM ROCKFORD FOSGATE PROMO RZR 4 SEATER
Condition:	Pre-Owned
Engine:	999 cc
Exterior:	Red
Type	Sport
Hours:	172
Transmission:	Automatic
Mileage:	2,416



2014 POLARIS RZR XP 1000 4 SEATER FULLY CUSTOM ROCKFORD FOSGATE PROMO RZR - Fully customized by the magicians over at TMW Off-Road. (Shout out to Doug Tyler) Beautiful build! Well over \$20k in add-ons: Custom cage, windshield, Full lighting (forward light bars, reverse cubes, down lights, interior lighting, rock crawl/wheel well spots, undercarriage lights) Custom paint/graphics, Muzzy exhaust, Brand new rear trans axles, Seat harnesses, Lone Star A-arms, Massive LSR trailing arms/upper A-arms, 32's Coyote wheels, Front & Rear push guards, Polaris trunk vault, TMW quick release steering wheel, Full framed after market doors, Awesome Rockford Fosgate sound System. Runs & drives great! Just serviced by HDC Motorsports. Drive axles installed by TNT Racing. No mechanical issues. Great shape overall. Regularly maintained and serviced. Adult owned. Low 2,416 miles. 172 hours. Length 152" x Width 74" x Height 71" VIN# 4XA6T1EA8EB922642 Do the math.... Over \$45k invested. Even more impressive in person! Great buy at \$19,800 Call or Text (480) 468-1229.

2014 Polaris RZR XP 1000 CUSTOM ROCKFORD FOSGATE PROMO RZR 4 SEATER

Auction-Direct2U - (480) 468-1229 - View this car on our website at auctiondirect2u.com/7306878/ebrochure

Our Location :



2014 Polaris RZR XP 1000 CUSTOM ROCKFORD FOSGATE PROMO RZR 4 SEATER

Auction-Direct2U - (480) 468-1229 - View this car on our website at auctiondirect2u.com/7306878/ebrochure

Installed Options

Auction-Direct2U
auctiondirect2u.com
(480) 468-1229
665 W. Main St.
Mesa, Arizona 85201

© 2024 AutoRevo - All rights reserved. - Powered by AutoRevo