

2007 GMC Sierra 1500 Classic SLE1

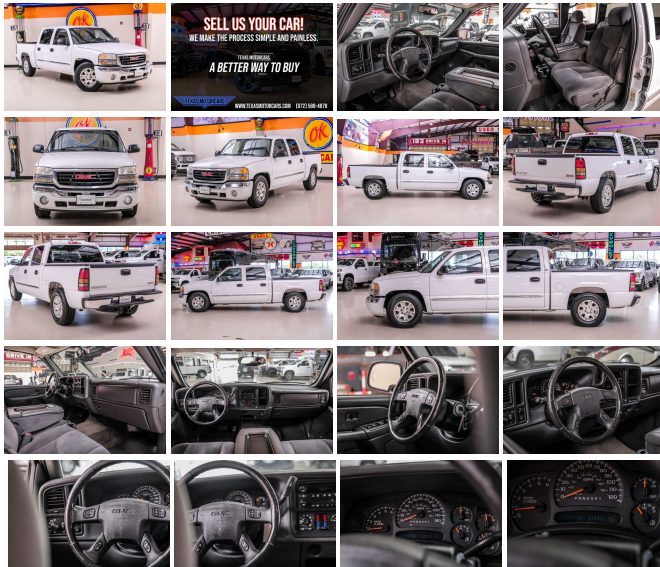
View this car on our website at mrcarguys.com/7306487/ebrochure



Our Price **\$8,998**

Specifications:

Year:	2007
VIN:	2GTEC13Z771142695
Make:	GMC
Stock:	142695
Model/Trim:	Sierra 1500 Classic SLE1
Condition:	Pre-Owned
Body:	Pickup Truck
Exterior:	[50U] Summit White
Engine:	Vortec 5.3L Flex Fuel V8 295hp 335ft. lbs.
Interior:	Neutral Cloth
Transmission:	4-Speed Automatic
Mileage:	218,539
Drivetrain:	Rear Wheel Drive
Economy:	City 11 / Highway 14

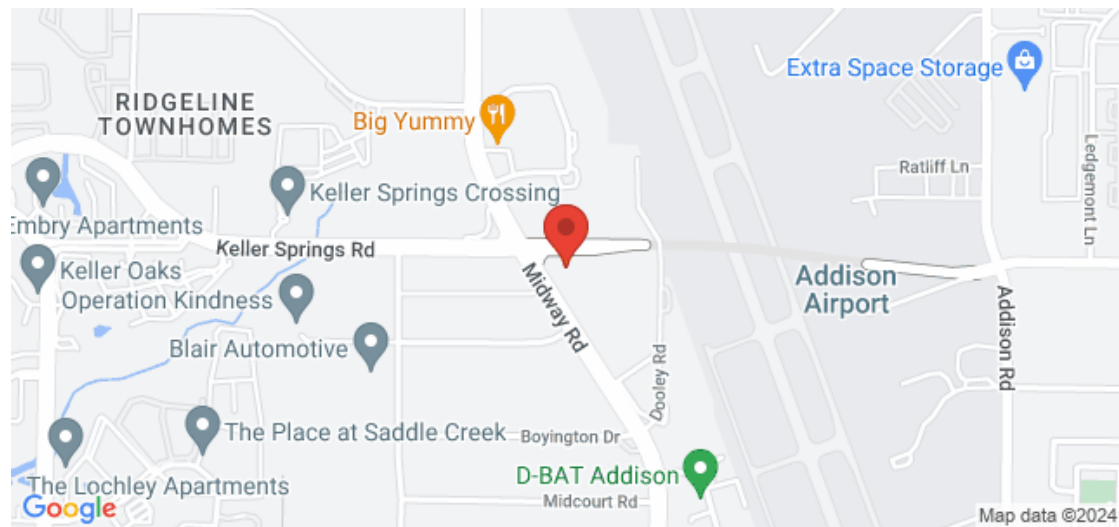


2007 GMC Sierra 1500 Classic SLE1 Step into the world of reliable performance and enduring quality with the 2007 GMC Sierra 1500 Classic SLE1. This pickup isn't just a vehicle; it's a testament to the blend of power and comfort, designed to meet the needs of those who demand both strength and sophistication in their ride. Slide into the driver's seat and you'll be greeted by a spacious and inviting gray cloth interior. The premium upholstery is designed for comfort during long hauls, while the dual-zone front air conditioning ensures you and your passengers can tailor the climate to your liking. The leather-trimmed steering wheel adds a touch of luxury to your daily drive, making it a space where functionality meets elegance. Under the hood lies the heart of this beast ??? a Vortec 5.3L Flex Fuel V8 engine, boasting 295 horsepower and 335 ft. lbs. of torque. This powerplant is paired with a smooth-shifting 4-speed automatic transmission, delivering the kind of performance that can handle heavy loads and challenging terrains with ease. The Sierra doesn't skimp on convenience features. Power windows and power door locks streamline your interactions with the vehicle, while the multi-function remote with keyless entry adds a layer of ease to your busy life. The auto-dimming rearview mirror ensures that you're not blinded by the lights of trailing vehicles, enhancing safety and comfort during night-time drives. Safety is paramount, and this Sierra 1500 Classic is equipped with 4-wheel ABS, providing superior stopping power in critical situations. The power-adjustable side mirrors, front fog lights, and daytime running lights enhance visibility, ensuring that you're both seen and able to see, no matter the conditions. The 2007 GMC Sierra 1500 Classic SLE1 is not just a truck; it's a symbol of hard work, reliability, and a commitment to excellence. Don't miss your chance to own a piece of automotive achievement. Embrace the power, indulge in the comfort, and join a

2007 GMC Sierra 1500 Classic SLE1

Mr Car Guys - 214-732-7859 - View this car on our website at mrcarguys.com/7306487/ebrochure

Our Location :



2007 GMC Sierra 1500 Classic SLE1

Mr Car Guys - 214-732-7859 - View this car on our website at mrcarguys.com/7306487/ebrochure

Installed Options

Interior

- Front air conditioning zones: dual - Rear vents: second row
- Armrests: rear center folding with storage- Floor mat material: rubber/vinyl
- Floor mats: front- Steering wheel trim: leather- Cruise control
- Multi-function remote: keyless entry- Power outlet(s): 12V front- Power steering
- Rearview mirror: auto-dimming- Clock- Compass- External temperature display
- Powertrain hour meter- Rear seat folding: one-piece- Rear seat type: bench

Exterior

- Front bumper color: chrome- Pickup bed light- Daytime running lights- Front fog lights
- Side mirror adjustments: power- Side mirrors: driver side only heated
- Spare wheel type: steel- Power windows- Rear privacy glass- Window defogger: rear

Mr Car Guys

mrcarguys.com

214-732-7859

16000 Midway Rd.

Addison, TX 75001

© 2024 AutoRevo - All rights reserved. - Powered by AutoRevo

