

2015 INFINITI Q50 Premium

David Knowles 901-428-2518

View this car on our website at wolfchaseautosales.com/7306125/ebrochure



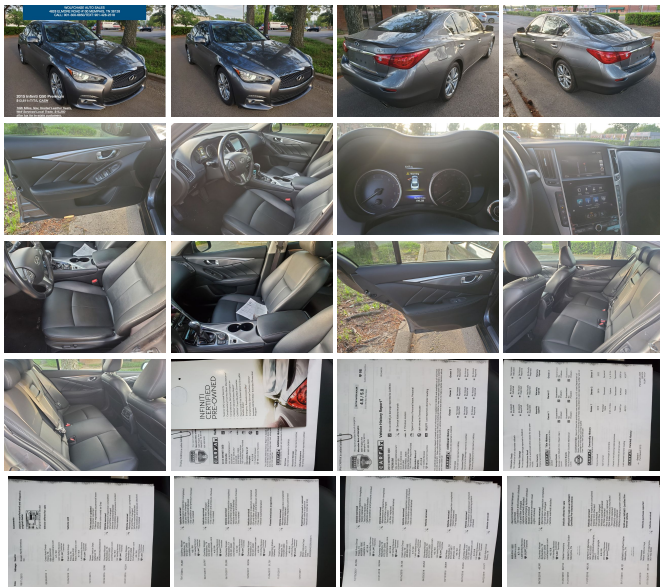
Our Price **\$13,611**

Specifications:

Year:	2015
VIN:	JN1BV7APXFM351677
Make:	INFINITI
Model/Trim:	Q50 Premium
Condition:	Pre-Owned
Body:	Sedan
Exterior:	[KAD] Graphite Shadow
Engine:	3.7L V6 328hp 269ft. lbs.
Interior:	Black
Transmission:	7-Speed Shiftable Automatic
Mileage:	102,602
Drivetrain:	Rear Wheel Drive
Economy:	City 20 / Highway 29

2015 Infiniti Q50 w/Premium Package....

Local trade-in with only 102k miles that has never been smoked in and has been well serviced (see affixed CarFax). Low cash price \$13,611 (TN residents pay \$15,250). Call David Knowles (901) 428-2518 or Herb Phillips (901) 300-6850 for more information or to schedule a test drive today.



2015 INFINITI Q50 Premium

Wolfchase Auto Sales - 901-428-2518 - View this car on our website at wolfchaseautosales.com/7306125/ebrochure

Vehicle History Report : as Of 05/04/2024



Snapshot

2015 INFINITI Q50 PREMIUM



No accidents or damage reported to CARFAX



38 Service history records



3 Previous owners



Types of owners: Personal lease
Personal



Last owned in Tennessee



102,577 Last reported odometer reading



FREE CARFAX Report

See the full CARFAX Report for additional information

*carfax Snapshot is a reflection of available information on the date the report was pulled. carfax is constantly being updated with new information and is subject to change at any time.

Our Location :



2015 INFINITI Q50 Premium

Wolfchase Auto Sales - 901-428-2518 - View this car on our website at wolfchaseautosales.com/7306125/ebrochure

Installed Options

Interior

- Air filtration- Front air conditioning: automatic climate control
- Front air conditioning zones: dual- Rear vents: second row- Door sill trim: aluminum
- Floor mat material: carpet- Floor mats: front- Interior accents: aluminum
- Steering wheel trim: leather- Cargo area light- Cruise control
- Multi-function remote: proximity entry system- Power outlet(s): two 12V front
- Power steering: variable/speed-proportional- Push-button start
- Rearview mirror: auto-dimming- Steering wheel: tilt and telescopic
- Touch-sensitive controls- Universal remote transmitter: Homelink - garage door opener
- Clock- Compass- Digital odometer- External temperature display- Multi-function display
- Trip odometer- Driver seat: heated- Driver seat power adjustments: 8
- Front seat type: bucket- Passenger seat: heated- Passenger seat power adjustments: 8
- Rear seat type: bench- Upholstery: leatherette

Exterior

- Exhaust: dual tip- Front bumper color: body-color- Mirror color: body-color
- Daytime running lights- Exterior entry lights: approach lamps- Front fog lights
- Taillights: LED- Side mirrors: heated- Run flat tires- Tire Pressure Monitoring System
- Wheels: aluminum alloy- Front wipers: speed sensitive- Solar-tinted glass
- Window defogger: rear

Wolfchase Auto Sales

wolfchaseautosales.com

901-428-2518

4828 Elmore Road

Memphis, Tennessee 38128

© 2024 AutoRevo - All rights reserved. - Powered by AutoRevo