



## 1955 Porsche 550 SPYDER Martini (Vintage Kit)

**Our Price \$39,995**

**Retail Value \$49,995**

View this vehicle on our website at [autosourcehawaii.com](http://autosourcehawaii.com)

autosource

(808) 597-8522

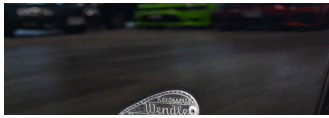
1488 Kapiolani Blvd , Honolulu, HI 96814

Photos

Details

Contact





## Specifications:

<b>Year:</b>	1955
<b>VIN:</b>	P83476
<b>Make:</b>	Porsche
<b>Stock:</b>	A000088
<b>Model/Trim:</b>	550 SPYDER Martini (Vintage Kit)
<b>Condition:</b>	Pre-Owned
<b>Body:</b>	Convertible
<b>Exterior:</b>	Black
<b>Engine:</b>	4cy
<b>Interior:</b>	BROWN Leather
<b>Transmission:</b>	manual
<b>Mileage:</b>	2,511
<b>Drivetrain:</b>	Rear Wheel Drive

## Vehicle Description

Step into the realm of timeless elegance and peerless performance with the iconic 1955 Porsche 550 Spyder S, a true masterpiece of automotive engineering that has captivated the hearts of enthusiasts and collectors alike. With a mere 5,000 miles on the odometer, this black beauty is not just a car; it's a slice of history, a work of art, and a testament to the enduring legacy of Porsche.

As you approach this stunning vehicle, the first thing that strikes you is its impeccable black exterior—a hue that exudes sophistication and commands attention. The paintwork is deep and lustrous, a perfect canvas for the Spyder's classic lines and curves that have made it an enduring symbol of speed and style. The 550 Spyder S is not just a car; it's a statement, a piece of rolling sculpture that is as thrilling to look at as it is to drive.

Beneath the sleek exterior lies the heart of the 550 Spyder S—an engine that is as much a marvel of its time as it is a beacon of Porsche's commitment to excellence. The precise engineering and meticulous attention to detail are evident in every rev of the engine, promising an exhilarating driving experience that is both raw and refined. The sound of the engine is a symphony to the ears of the true aficionado, a siren song that beckons you to the open road where this car belongs.

The 550 Spyder S is not just about stunning looks and powerful performance; it's also about the unique driving experience that only a vehicle of this caliber can provide. The connection between driver and machine is palpable, as if the car is an extension of your own senses. The responsive handling and the tactile feedback from the road make every journey an adventure, turning even the most mundane trip into a memorable excursion.

Inside, the 550 Spyder S is a masterclass in form meeting function. The manufacturer options and packages have been selected with the utmost care to ensure that this vehicle is as comfortable as it is capable. Every detail, from the instrumentation to the seating, has been crafted to provide an unrivaled driving experience that is both intuitive and indulgent. This is a car that doesn't just move you—it transports you to another time and place, where the romance of the road reigns supreme.

This 1955 Porsche 550 Spyder S is not just another classic car; it's a rare opportunity to own a piece of motoring history. It's a chance to be part of a legacy of innovation and excellence that has defined Porsche for generations. With its low mileage, stunning black exterior, and the unmatched pedigree of a true Porsche, this 550 Spyder S is poised to be the crown jewel of any collection.

For the discerning buyer who understands the value of rarity, craftsmanship, and performance, this 1955 Porsche 550 Spyder S is more than an investment—it's a treasure. Don't miss your chance to experience the pinnacle of automotive perfection. Embrace the allure of the Porsche 550 Spyder S and let it take you on a journey you'll never forget. Your legend awaits.

### Installed Options

Autosource Hawaii

Autosource Hawaii

View this car on our website at [autosourcehawaii.com/7304864](https://autosourcehawaii.com/7304864)

Website: [autosourcehawaii.com](https://autosourcehawaii.com)

Phone: [\(808\) 597-8522](tel:8085978522)

Map: [1488 Kapiolani Blvd, Honolulu, HI 96814](#)

