

2016 Porsche Panamera S E-Hybrid ROOF,NAV,HTD/COOL LTH,BOSE,20'S,55K

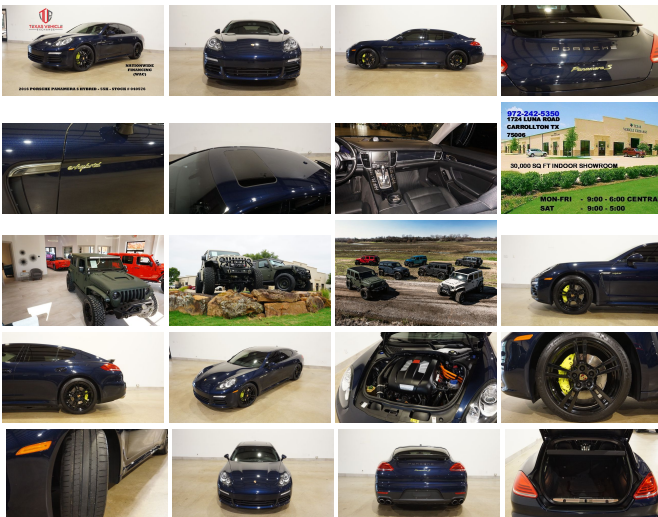
View this car on our website at tveauto.com/7304465/ebrochure



Our Price **\$29,900**

Specifications:

Year:	2016
VIN:	WP0AD2A78GL040576
Make:	Porsche
Stock:	040576
Model/Trim:	Panamera S E-Hybrid ROOF,NAV,HTD/COOL LTH,BOSE,20'S,55K
Condition:	Pre-Owned
Body:	Sedan
Exterior:	[N5] Night Blue Metallic
Engine:	3.0L Plug-in Hybrid Supercharged V6 416hp 435ft. lbs.
Interior:	Black Leather
Transmission:	8-Speed Shiftable Automatic
Mileage:	55,271
Drivetrain:	Rear Wheel Drive
Economy:	City 43 / Highway 66



NATION WIDE FINANCING

SUBMIT CREDIT APP WWW.TVEAUTO.COM

OR CALL 972-242-5350

2016 PORSCHE PANAMERA S E-HYBRID, 3.0L V6 ENGINE WITH PLUG IN HYBRID ELECTRIC, AUTOMATIC TRANSMISSION, ONLY 55K, NIGHT BLUE METALLIC W/BLACK LEATHER INTERIOR, CARFAX REPORTS 2 OWNERS NO ACCIDENTS, APPEARS TO BE A NON-SMOKER, PREMIUM PLUS PACKAGE (\$4,700.00), FRONT & REAR PARK DISTANCE SENSORS, SUNROOF, NAVIGATION, BACK-UP CAMERA, POWER WINDOWS, POWER

DOOR LOCKS, POWER FOLDING HEATED MIRRORS, BLIND SPOT CONTROL, POWER TILT/TELESCOPE STEERING WHEEL WITH AUDIO CONTROLS, CRUISE CONTROL, PADDLE SHIFTERS, DUAL POWER HEATED & COOLED FRONT SEATS WITH 2 MEMORY POSITION, SPORT BUTTON, PSM CONTROL, COMFORT/SPORT/SPORT PLUS SUSPENSION CONTROL, RIDE HEIGHT CONTROL, ICE COLD A/C, DUAL CLIMATE CONTROL, BOSE HD AM/FM/XM STEREO WITH CD PLAYER, BLUETOOTH, SELF DIMMING REAR VIEW MIRROR, HOMELINK GARAGE CONTROLS, DUAL LIGHTED VANITY MIRRORS, REAR HEATED SEATS, REAR A/C CONTROL & VENTS, CARGO COVER, POWER TRUNK LID, POWER REAR SPOILER, RUBBER & CLOTH FLOOR MATS, OWNER'S MANUAL, 2 KEYS/2 REMOTES. 20" 911 TURBO II WHEELS, FRONT TIRES ARE MICHELIN 255/40ZR/20, REAR TIRES ARE MICHELIN 295/35ZR/20. RUNS AND DRIVES GREAT. GIVE US A CALL @ 972-242-5350 OR STOP BY FOR A TEST DRIVE. 1724 LUNA RD IN CARROLLTON - 2 MILES NORTH OF 635. CLICK ON CARFAX ICON TO VIEW A FULL REPORT AT NO COST TO YOU.

2016 Porsche Panamera S E-Hybrid ROOF,NAV,HTD/COOL LTH,BOSE,20'S,55K

Texas Vehicle Exchange - 972-242-5350 - View this car on our website at tveauto.com/7304465/ebrochure

Vehicle History Report : as Of 05/03/2024



Snapshot

2016 PORSCHE PANAMERA S E-HYBRID



No accidents or damage reported to CARFAX



Regular oil changes



2 Previous owners



Types of owners: Personal lease
Personal



Last owned in Texas



53,075 Last reported odometer reading



FREE CARFAX Report

See the full CARFAX Report for additional information

*carfax Snapshot is a reflection of available information on the date the report was pulled. carfax is constantly being updated with new information and is subject to change at any time.

Our Location :



2016 Porsche Panamera S E-Hybrid ROOF,NAV,HTD/COOL LTH,BOSE,20'S,55K
Texas Vehicle Exchange - 972-242-5350 - View this car on our website at tveauto.com/7304465/ebrochure

Installed Options

Interior

- Air filtration: active charcoal- Front air conditioning: automatic climate control
- Front air conditioning zones: dual- Center console trim: leather- Dash trim: leather
- Door trim: leather- Floor mat material: carpet- Floor mats: front- Interior accents: leather
- Shift knob trim: leather- Steering wheel trim: leather- Ambient lighting- Cargo area light
- Cruise control- Multi-function remote: keyless entry- Power outlet(s): 12V front
- Power steering- Rearview mirror: auto-dimming- Steering wheel: tilt and telescopic
- Touch-sensitive controls- Universal remote transmitter: garage door opener- Clock
- Compass- Digital odometer- External temperature display- Multi-function display
- Trip odometer- Driver seat: heated- Driver seat power adjustments: 8
- Front seat type: bucket- Passenger seat: heated- Passenger seat power adjustments: 8
- Rear seat type: bucket- Upholstery: leather

Exterior

- Exhaust: quad tip- Front bumper color: body-color- Mirror color: body-color
- Rear spoiler: adjustable- Daytime running lights: LED- Rear fog lights
- Taillights: adaptive- Side mirror adjustments: power- Side mirrors: auto-dimming
- Spare tire kit: tire sealant- Tire Pressure Monitoring System- Wheels: aluminum alloy
- Front wipers: rain sensing- Heated windshield washer jets- Power windows
- Rear wiper: intermittent- Tinted glass- Window defogger: rear

Option Packages

Factory Installed Packages

Bose Surround Sound System Includes 14 speakers, subwoofer, 9-channel amplifier and total power output of 585 Watts.	\$1,590
20 in. 911 Turbo II Wheels	\$3,380
Premium Package Plus Includes front and rear seat heating, front and rear parking sensors, reversing camera, 14-way power seats with memory, keyless entry, push button start, lane change assist, front seat ventilation, and 4-zone climate control.	\$4,700
Option Packages Total	\$9,670

Texas Vehicle Exchange

tveauto.com

972-242-5350

1724 Luna Road

Carrollton, TX 75006

© 2024 AutoRevo - All rights reserved. - Powered by AutoRevo