

# 2013 Tesla Model S Performance

View this car on our website at [theusedcarandtruckclub.com/7304173/ebrochure](http://theusedcarandtruckclub.com/7304173/ebrochure)



Our Price **\$16,999**

## Specifications:

<b>Year:</b>	2013
<b>VIN:</b>	5YJSA1CP3DFP07816
<b>Make:</b>	Tesla
<b>Stock:</b>	P07816
<b>Model/Trim:</b>	Model S Performance
<b>Condition:</b>	Pre-Owned
<b>Body:</b>	Sedan
<b>Exterior:</b>	Blue Metallic
<b>Engine:</b>	Electric 416hp 443ft. lbs.
<b>Interior:</b>	Gray
<b>Transmission:</b>	1-Speed Direct-Drive Automatic
<b>Mileage:</b>	133,345
<b>Drivetrain:</b>	Rear Wheel Drive
<b>Economy:</b>	City 88 / Highway 90

IRC 25E Instant Tax Credit Eligible Vehicle! \*Certain IRS Restrictions Apply

2013 Tesla Model S P85 Performance - Blue on Gray - Free Unlimited supercharging - Power Roof - Clean CARFAX - MUST SEE!!!

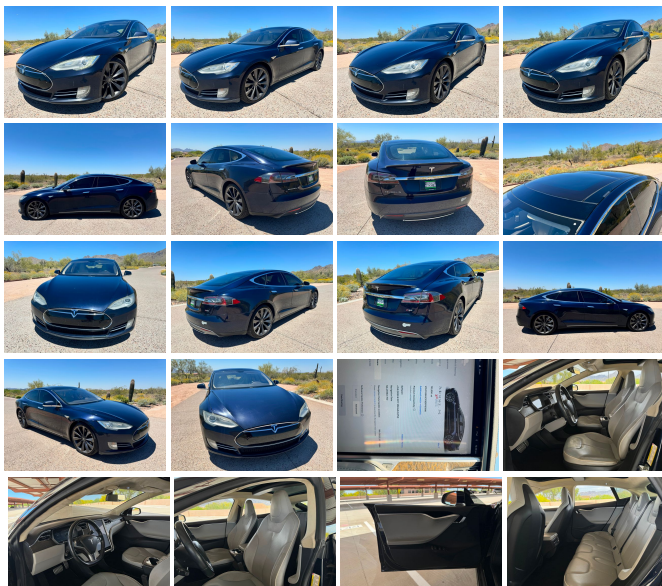
We Ship Worldwide, Take Trade-in's and have many Extended Warranty options!

## DESCRIPTION:

- 2013 Tesla Model S P85 Performance
- Free Unlimited Supercharging
- Blue Exterior
- Gray Interior
- Only 133K Miles
- Clean CarFax
- Premium Wheels
- Premium Connectivity
- Power Roof
- AND SO MUCH MORE!!!!!!

## Contact Us:

If you have any additional questions please call or text our Friendly Sales Staff here at Spotleson Motor Group at 480-703-0516. We can help with shipping quotes and arrangements. We also welcome all International buyers. The car is located in beautiful sunny Scottsdale, AZ.



Benefits of buying a vehicle with us:


An amazing offering of quality inspected vehicles. Mostly all direct from private party owners only available through our unique consignment model. We offer all the perks and conveniences of a traditional dealership with none of the headaches. Competitive financing, quality extended warranties, ability to take trades & full transparency.

Plus, you can purchase a private party vehicle completely online with total trust and confidence! We all work as a team here making your buying experience pleasurable and memorable! We sell our vehicles nationwide and worldwide. We can also help assist buyers with all their shipping needs anywhere in the world!

2013 Tesla Model S Performance







The Used Car and Truck Club - 480-703-0516 - View this car on our website at [theusedcarandtruckclub.com/7304173/ebrochure](http://theusedcarandtruckclub.com/7304173/ebrochure)


**Vehicle History Report : as Of 05/15/2024**



**Snapshot**

**2013 TESLA MODEL S PERFORMANCE**

-  No accidents or damage reported to CARFAX
-  **1** Service history record
-  **2** Previous owners
-  Personal vehicle
-  Last owned in California
-  **132,468** Last reported odometer reading



**FREE CARFAX Report**

See the full CARFAX Report for additional information

\*carfax Snapshot is a reflection of available information on the date the report was pulled. carfax is constantly being updated with new information and is subject to change at any time.

**Our Location :**

□

2013 Tesla Model S Performance

The Used Car and Truck Club - 480-703-0516 - View this car on our website at [theusedcarandtruckclub.com/7304173/ebrochure](http://theusedcarandtruckclub.com/7304173/ebrochure)

## Installed Options

### Interior

- Air filtration- Front air conditioning: automatic climate control
- Front air conditioning zones: dual- Interior accents: leather- Steering wheel trim: leather
- Cruise control- Multi-function remote: keyless entry- Power outlet(s): 12V
- Power steering- Steering wheel: power tilt and telescopic- Sun visors
- Touch-sensitive controls- Customizable instrument cluster
- Instrument cluster screen size: 12.3 in.- Multi-function display- Driver seat: heated
- Driver seat power adjustments: 12- Front seat type: bucket- Passenger seat: heated
- Passenger seat power adjustments: 12- Rear seat folding: split
- Rear seat type: 60-40 split bench

### Exterior

- Door handle color: chrome- Front bumper color: body-color
- Mirror color: body-color with chrome accents- Daytime running lights- Taillights: LED
- Side mirrors: heated- Tire Pressure Monitoring System- Wheels: aluminum alloy
- Front wipers: rain sensing- Power windows: safety reverse- Window defogger: rear

---

The Used Car and Truck Club

[theusedcarandtruckclub.com](http://theusedcarandtruckclub.com)

480-703-0516

9382 E Bahia Drive #B102

Scottsdale, AZ 85260

© 2024 AutoRevo - All rights reserved. - Powered by AutoRevo