

# 2024 Ford Expedition Timberline

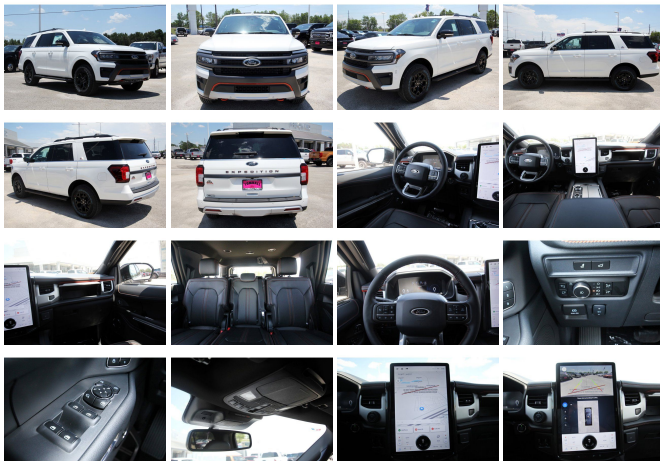
View this car on our website at [askjorgelopez.com/7304044/ebrochure](https://askjorgelopez.com/7304044/ebrochure)



Our Price **\$85,940**

## Specifications:

<b>Year:</b>	2024
<b>VIN:</b>	1FMJU1RGXREA75265
<b>Make:</b>	Ford
<b>Stock:</b>	EA75265
<b>Model/Trim:</b>	Expedition Timberline
<b>Condition:</b>	New
<b>Body:</b>	SUV
<b>Exterior:</b>	STAR WHITE MET TRI-COAT
<b>Engine:</b>	EcoBoost 3.5L Twin Turbo V6 440hp 510ft. lbs.
<b>Interior:</b>	LIMITED LEATHER BUCKET BLACK ONYX Vinyl
<b>Transmission:</b>	10-Speed Shifttable Automatic
<b>Mileage:</b>	0
<b>Drivetrain:</b>	4 Wheel Drive



"You'll have no regrets driving this reliable 2024 Ford Expedition. Tire Specific Low Tire Pressure Warning, Side Impact Beams, Safety Canopy System Curtain 1st, 2nd And 3rd Row Airbags, Reverse Sensing System Rear Parking Sensors, Rear Child Safety Locks.\*Fully-Loaded with Additional Options\*HEAVY-DUTY TRAILER TOW PACKAGE -inc: Integrated Trailer Brake Controller, Pro Trailer Backup Assist, EQUIPMENT GROUP 501A HIGH PACKAGE -inc: 2nd Row Leather Trimmed Pwr-Folding Captain's Chairs, armrests and tip-and-slide, 2-Speed Automatic 4WD, neutral towing capability, Instrument Panel Cluster, 12.4" multicolor productivity screen and full digital display, Heated Steering Wheel, 2nd Row Power Windows, one-touch up/down feature, Radio: B&O Sound System by Bang & Olufsen, speed-compensated volume, HD Radio, AM/FM stereo, MP3 capability and 12 speakers including subwoofer, Power-Folding Sideview Mirrors w/Autofold, power and heated glass, turn signal indicators, security approach lamps, driver/passenger side memory and body-color caps, Ford Co-Pilot360 Assist 2.0, Connected Navigation, 1 year of connectivity, pinch-to-zoom capability, live traffic, predictive destinations and route guidance, Reverse Brake Assist, 360-Degree Camera w/Split View, front/rear washer, 15.5" LCD Capacitive Touchscreen, Vinyl Center Console, Panoramic Vista Roof, power open/close w/power shade, Rain-Sensing, HEAVY-DUTY TRAILER TOW PACKAGE -inc: Integrated Trailer Brake Controller, Pro Trailer Backup Assist, FRONT LICENSE PLATE BRACKET -inc: Standard in states requiring two license plates and optional to all others, EQUIPMENT GROUP 501A HIGH PACKAGE -inc: 2nd Row Leather Trimmed Pwr-Folding Captain's Chairs, armrests and tip-and-slide, 2-Speed Automatic 4WD, neutral towing capability, Instrument Panel Cluster, 12.4" multicolor productivity screen and full digital display, Heated Steering Wheel, 2nd Row Power Windows, one-touch up/down feature, Radio: B&O Sound

System by Bang & Olufsen, speed-compensated volume, HD Radio, AM/FM stereo, MP3 capability and 12 speakers including subwoofer, Power-Folding Sideview Mirrors w/Autofold, power and heated glass, turn signal indicators, security approach lamps, driver/passenger side memory and body-color caps, Ford Co-Pilot360 Assist 2.0, Connected Navigation, 1 year of connectivity, pinch-to-zoom capability, live traffic, predictive destinations and route guidance, Reverse Brake Assist, 360-Degree Camera w/Split View, front/rear washer, 15.5" LCD Capacitive Touchscreen, Vinyl Center Console, Panoramic Vista Roof, power open/close w/power shade, Rain-Sensing, ENGINE: 3.5L V6 ECOBOOST HIGH OUTPUT (STD), ADVANCED CARGO MANAGER - inc: Black Roof-Rail Crossbars, 2ND ROW POWER-FOLDING 40/20/40 LEATHER BENCH SEAT -inc: 8-passenger seating, tip-and-slide feature, Wireless Phone Connectivity, Window Grid Antenna.\* Visit Us Today \*Stop by Tomball Ford located at 22702 Tomball Parkway, Tomball, TX 77375 for a quick visit and a great vehicle!"

2024 Ford Expedition Timberline

Ask Jorge Lopez - 281-205-0352 - View this car on our website at [askjorgelopez.com/7304044/ebrochure](http://askjorgelopez.com/7304044/ebrochure)

### Vehicle History Report : as Of 07/27/2024



#### Snapshot

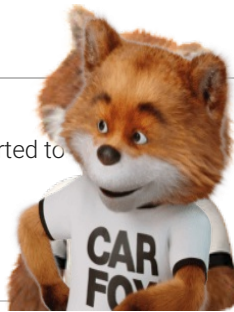
#### 2024 FORD EXPEDITION TIMBERLINE



No accidents or damage reported to CARFAX



1 Detailed record available



**FREE CARFAX Report**

See the full CARFAX Report for additional information

\*carfax Snapshot is a reflection of available information on the date the report was pulled. carfax is constantly being updated with new information and is subject to change at any time.

### Our Location :



2024 Ford Expedition Timberline

Ask Jorge Lopez - 281-205-0352 - View this car on our website at [askjorgelopez.com/7304044/ebrochure](http://askjorgelopez.com/7304044/ebrochure)

## Installed Options

### Interior

- Air filtration- Front air conditioning: automatic climate control
- Front air conditioning zones: dual- Rear air conditioning: automatic climate control
- Rear vents: third row- Door trim: leatherette- Floor mat material: carpet- Floor mats: front
- Steering wheel trim: leather- Capless fuel filler system- Cargo area light- Cruise control
- Easy entry: power rear seat- Keypad entry- Memorized settings: 3 driver
- Power outlet(s): 115V rear- Power steering: variable/speed-proportional- Push-button start
- Rearview mirror: auto-dimming- Remote engine start
- Steering wheel: power tilt and telescopic
- Universal remote transmitter: garage door opener- Wireless charging station: front- Clock
- Compass- Digital odometer- External temperature display
- Instrument cluster screen size: 8 in.- Multi-function display- Trip odometer
- Driver seat power adjustments: 10- Front seat type: bucket
- Passenger seat power adjustments: 8- Rear seat folding: flat
- Rear seat power adjustments: reclining- Rear seat type: 40-20-40 split bench
- Third row seat folding: fold flat into floor- Third row seat type: 40-60 split bench
- Upholstery accents: cloth

### Exterior

- Active grille shutters- Running boards- Daytime running lights
- Exterior entry lights: approach lamps- Front fog lights: LED
- Side mirror adjustments: power- Side mirrors: heated- Roof rails: black
- Spare wheel type: steel- Tire Pressure Monitoring System
- Wheels: painted aluminum alloy- Laminated glass: acoustic windshield
- Liftgate window: manual flip-up- Power windows: safety reverse- Rear privacy glass
- Rear wiper: intermittent- Solar-tinted glass: front- Window defogger: rear

Ask Jorge Lopez

[askjorgelopez.com](http://askjorgelopez.com)

281-205-0352

22702 Tomball Parkway

Tomball, TX 77375

© 2024 AutoRevo - All rights reserved. - Powered by AutoRevo