

2022 Mercedes-Benz AMG SL 63 4MATIC HUD,NAV,360 CAM,BURMESTER,BLK 21'S,1K

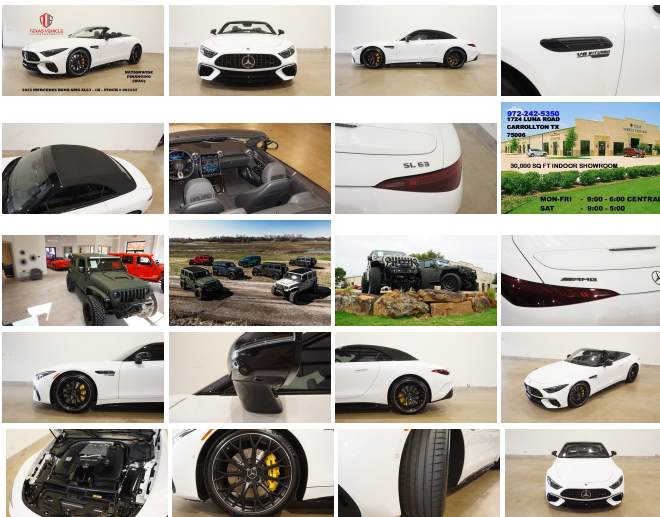
View this car on our website at tveauto.com/7303730/ebrochure



Our Price **\$135,900**

Specifications:

Year:	2022
VIN:	W1KVK8BBXNF002247
Make:	Mercedes-Benz
Stock:	002247
Model/Trim:	AMG SL 63 4MATIC HUD,NAV,360 CAM,BURMESTER,BLK 21'S,1K
Condition:	Pre-Owned
Body:	Convertible
Exterior:	[885] MANUFAKTUR Moonlight White Metallic
Engine:	4.0L Twin Turbo V8 577hp 590ft. lbs.
Interior:	Black Leather
Transmission:	9-Speed Shiftable Automatic
Mileage:	1,354
Drivetrain:	All Wheel Drive
Economy:	City 14 / Highway 21



NATION WIDE FINANCING

SUBMIT CREDIT APP WWW.TVEAUTO.COM

OR CALL 972-242-5350

2022 MERCEDES BENZ AMG SL 63 4MATIC, 4.0L BITURBO V8 ENGINE, 9 SPEED AUTOMATIC TRANSMISSION, ONLY 1,354 MILES, MANUFAKTUR MOONLIGHT WHITE METALLIC W/BLACK NAPPA LEATHER INTERIOR, CARFAX REPORTS 1 OWNER NO ACCIDENTS, NON-SMOKER, DRIVER ASSISTANCE PACKAGE (\$1,950.00), PERFORMANCE LINE (\$1,800.00), AMG CARBON FIBER TRIM (\$2,850.00), AMG NIGHT PACKAGE 2 (\$750.00), AMG EXTERIOR NIGHT STYLING (\$750.00).

MANUFAKTUR BLACK MICROFIBER HEADLINER (\$1,600.00), BURMESTER HIGH-END 3D SURROUND SOUND (\$4,500.00), PUSH BUTTON START, FRONT AND REAR PARK DISTANCE SENSORS, HEAD-UP DISPLAY, POWER FOLDING SOFT TOP, NAVIGATION, BACK-UP CAMERA, 360 VIEW CAMERAS, POWER WINDOWS, POWER DOOR LOCKS, POWER FOLDING HEATED MIRRORS WITH TURN SIGNALS, BLIND SPOT CONTROL, POWER & HEATED TILT/TELESCOPE STEERING WHEEL WITH AUDIO & CRUISE CONTROLS, PADDLE SHIFTERS, DUAL POWER HEATED & COOLED FRONT SEATS WITH 3 MEMORY POSITION, ESP CONTROL, ATTENTION ASSIST, ACTIVE LANE KEEPING ASSIST, ACTIVE STEERING ASSIST, DYNAMIC MODE CONTROLS, EXHAUST MODE CONTROL, RIDE HEIGHT CONTROL, ICE COLD A/C, DUAL CLIMATE CONTROL, BURMESTER HD FM/SIRIUS STEREO, BLUETOOTH, SELF DIMMING REAR VIEW MIRROR, HOMELINK GARAGE CONTROLS, DUAL VANITY MIRRORS, POWER REAR SPOILER, POWER TRUNK LID, FLOOR MATS, OWNER'S MANUAL, 2 KEYS/2 REMOTES. 21" AMG 10-SPOKE Y-DESIGN BLACK WHEELS, CROSS DRILLED ROTORS, FRONT TIRES ARE MICHELIN 275/35ZR/21, REAR TIRES ARE MICHELIN 305/30ZR/21. RUNS AND DRIVES GREAT. GIVE US A CALL @ 972-242-5350 OR STOP BY FOR A TEST DRIVE. 1724 LUNA RD IN CARROLLTON - 2 MILES NORTH OF 635. CLICK ON CARFAX ICON TO VIEW A FULL REPORT AT NO COST TO YOU.

Vehicle History Report : as Of 05/03/2024



Snapshot

2022 MERCEDES-BENZ SL-CLASS AMG SL 63



No accidents or damage reported to CARFAX



Regular oil changes



CARFAX 1-Owner vehicle



Personal lease vehicle



Last owned in Texas



772 Last reported odometer reading



FREE CARFAX Report

See the full CARFAX Report for additional information

*carfax Snapshot is a reflection of available information on the date the report was pulled. carfax is constantly being updated with new information and is subject to change at any time.

Our Location :



2022 Mercedes-Benz AMG SL 63 4MATIC HUD,NAV,360 CAM,BURMESTER,BLK 21'S,1K
Texas Vehicle Exchange - 972-242-5350 - View this car on our website at veauto.com/7303730/ebrochure

Installed Options

Interior

- Air filtration: active charcoal- Front air conditioning: automatic climate control
- Front air conditioning zones: dual- Humidity/dewpoint sensors- Rear vents: second row
- Center console trim: aluminum- Dash trim: aluminum
- Door sill trim: illuminated scuff plate- Door trim: aluminum- Floor mat material: carpet
- Floor mats: front- Foot pedal trim: aluminum- Heated steering wheel
- Interior accents: aluminum- Shift knob trim: leather- Steering wheel trim: leather
- Active parking system: fully automated- Ambient lighting: color-adjustable
- Cargo area light- Cruise control- Easy entry: power driver seat- Footwell lights
- Memorized settings: 3 driver- Power outlet(s): 12V front
- Power steering: variable/speed-proportional- Push-button start
- Rearview mirror: auto-dimming- Steering wheel: power tilt and telescopic
- Sunshade: side window- Touch-sensitive controls
- Universal remote transmitter: Homelink - garage door opener
- Wireless charging station: front- Clock- Compass- Customizable instrument cluster
- Digital odometer- External temperature display- Head-up display
- Instrument cluster screen size: 12.3 in.- Multi-function display- Trip odometer
- Driver seat: heated- Driver seat power adjustments: 14- Front seat type: sport bucket
- Passenger seat: heated- Passenger seat power adjustments: 14- Rear seat type: bucket
- Upholstery: premium leather

Exterior

- Front bumper color: body-color- Grille color: black with chrome accents
- Mirror color: body-color- Rear spoiler: decklid- Rear trunk/liftgate: power operated
- Daytime running lights: LED- Exterior entry lights: approach lamps- Rear fog lights
- Taillights: LED- Side mirror adjustments: power- Side mirrors: driver side auto-dimming
- Convertible roof: power- Convertible roof wind blocker- Spare tire kit: tire sealant
- Tire Pressure Monitoring System- Wheels: aluminum alloy
- Heated windshield washer jets- Window defogger: rear

Option Packages

Factory Installed Packages

Burmester High End 3D Surround Sound System Includes 17 premium speakers with trunk mounted subwoofer and 1,220-watt amplifier.	\$4,500
---	----------------

21 in. AMG 10-Spoke Y-Design Black Wheels Includes 21 x 9.5 in. front and 21 x 11.0 in. rear wheels with 275/35 front and 305/30 rear performance tires.	\$1,600
--	----------------

MANUFAKTUR Moonlight White Metallic Paint	\$1,750
--	----------------

AMG Carbon Fiber Interior Trim	\$2,850
---------------------------------------	----------------

Black Microfiber Headliner	\$1,600
-----------------------------------	----------------

AMG Night Package 2 with Dark Light Package Includes grille, MB star and badging in black chrome, and darkened headlight and taillight housings.	\$750
--	--------------

Driver Assistance Package Includes active distance assist DISTRONIC with active stop-and-go assist, active steering assist, evasive steering assist, active blind spot assist, active lane keeping assist, active lane change assist, active brake assist with cross-traffic function, congestion emergency braking, active emergency stop assist, active speed limit assist, PRE-SAFE PLUS, route-based speed adaptation, and extended restart in stop-and-go traffic.	\$1,950
---	----------------

Performance Trim Includes AMG ACTIVE RIDE CONTROL suspension, front axle lift system, Night Package, and AMG Dynamic Plus Package with RACE drive mode, yellow brake calipers, dynamic engine mount, electronic limited slip differential, and suspension lowered by 10mm.	\$1,800
--	----------------

Option Packages Total	\$16,800
------------------------------	-----------------

Texas Vehicle Exchange

tveauto.com

972-242-5350

1724 Luna Road

Carrollton, TX 75006

© 2024 AutoRevo - All rights reserved. - Powered by AutoRevo