

# 2019 Ford F-350 Super Duty XL

View this car on our website at [colliervilleautocenter.com/7303355/ebrochure](http://colliervilleautocenter.com/7303355/ebrochure)



Our Price **\$44,999**

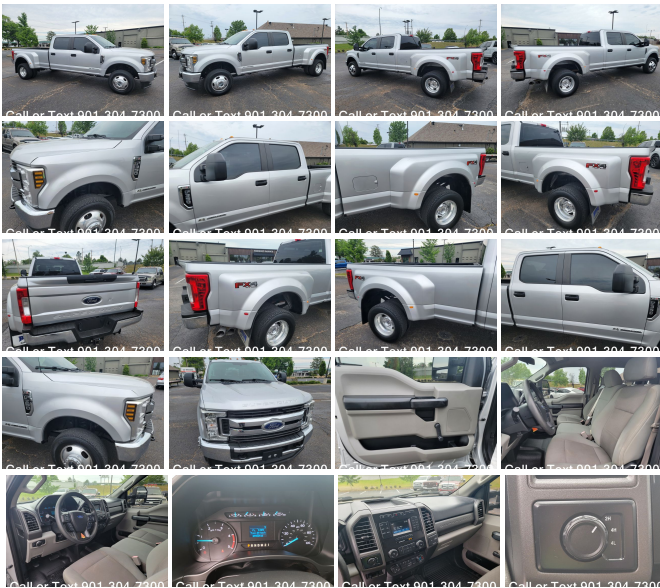
## Specifications:

<b>Year:</b>	2019
<b>VIN:</b>	1FT8W3DT1KEF28756
<b>Make:</b>	Ford
<b>Stock:</b>	F28756
<b>Model/Trim:</b>	F-350 Super Duty XL
<b>Condition:</b>	Pre-Owned
<b>Body:</b>	Pickup Truck
<b>Exterior:</b>	[UX] Ingot Silver
<b>Engine:</b>	Power Stroke 6.7L Biodiesel Turbo V8 450hp 935ft. lbs.
<b>Interior:</b>	Gray
<b>Transmission:</b>	6-Speed Shiftable Automatic
<b>Mileage:</b>	99,498
<b>Drivetrain:</b>	4 Wheel Drive

2019 Ford F350 Dually 4X4 6.7 Liter Diesel work truck, 99K miles Ready.

Memphis Truck Center @ Collierville Auto Sales offers the best selections of used cars and trucks in the Mid South, Locate conveniently @ 651 W Poplar in Collierville TN. Come see the largest selection of used diesel trucks in the area.

Multiple Financing and Warranty Options for all buyers. Call or Text 901//304//7300 today for more information.



## Vehicle History Report : as Of 05/02/2024

**CARFAX**

Snapshot

2019 FORD F-350 SUPER DUTY XL



Damage reported: minor damage



MINOR MODERATE SEVERE

10 Service history records



At least 1 open recall



2 Previous owners



99,498 Last reported odometer reading



**FREE CARFAX Report**

See the full CARFAX Report for additional information

\*carfax Snapshot is a reflection of available information on the date the report was pulled. carfax is constantly being updated with new information and is subject to change at any time.

## Our Location :



2019 Ford F-350 Super Duty XL

Collierville Auto Center - 901-315-2155 - View this car on our website at [colliervilleautocenter.com/7303355/ebrochure](http://colliervilleautocenter.com/7303355/ebrochure)

## Installed Options

### Interior

- Air filtration- Front air conditioning- Power outlet(s): 12V front- Power steering
- Steering wheel: tilt and telescopic- Clock- Digital odometer- External temperature display
- Powertrain hour meter- Front seat type: 40-20-40 split bench - Rear seat folding: folds up
- Rear seat type: 60-40 split bench

### Exterior

- Pickup bed light- Tailgate: lift assist- Clearance lights- Towing mirrors- Dual rear wheels
- Spare wheel type: steel- Tire Pressure Monitoring System- Wheels: painted steel
- Front wipers: variable intermittent- Solar-tinted glass: front

\*PRICE LISTED INCLUDES A \$599 PROCESSING FEE AND DOES NOT INCLUDE TAXES, TAGS, TITLE, LICENSE, REGISTRATION OR OTHER DELIVERY CHARGES.

Collierville Auto Center  
[colliervilleautocenter.com](http://colliervilleautocenter.com)  
901-315-2155

651 W Poplar  
Collierville, TN 38017

© 2024 AutoRevo - All rights reserved. - Powered by AutoRevo