

2007 GMC Sierra 1500 Classic SLE1

View this car on our website at texasmotorcars.com/7303292/ebrochure



Our Price **\$8,998**

Specifications:

Year:	2007
VIN:	2GTEC13Z771142695
Make:	GMC
Stock:	142695
Model/Trim:	Sierra 1500 Classic SLE1
Condition:	Pre-Owned
Body:	Pickup Truck
Exterior:	[50U] Summit White
Engine:	Vortec 5.3L Flex Fuel V8 295hp 335ft. lbs.
Interior:	Neutral Cloth
Transmission:	4-Speed Automatic
Mileage:	218,539
Drivetrain:	Rear Wheel Drive
Economy:	City 11 / Highway 14

2007 GMC Sierra 1500 Classic SLE1

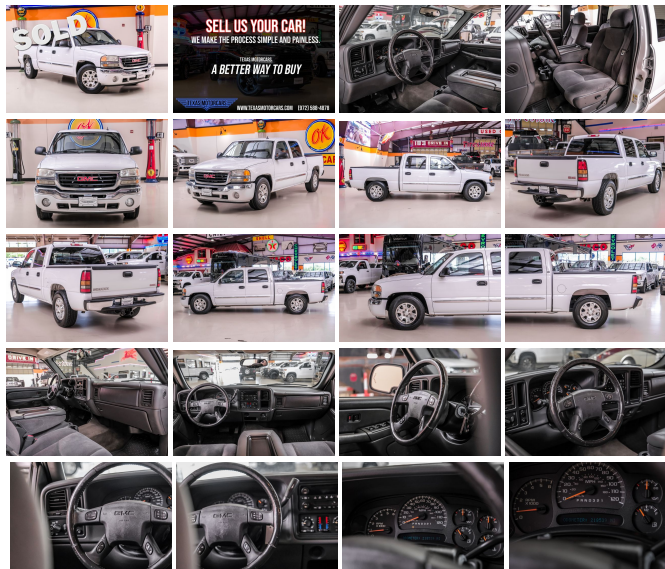
Step into the world of reliable performance and enduring quality with the 2007 GMC Sierra 1500 Classic SLE1. This pickup isn't just a vehicle; it's a testament to the blend of power and comfort, designed to meet the needs of those who demand both strength and sophistication in their ride.

Slide into the driver's seat and you'll be greeted by a spacious and inviting gray cloth interior. The premium upholstery is designed for comfort during long hauls, while the dual-zone front air conditioning ensures you and your passengers can tailor the climate to your liking. The leather-trimmed steering wheel adds a touch of luxury to your daily drive, making it a space where functionality meets elegance.

Under the hood lies the heart of this beast – a Vortec 5.3L Flex Fuel V8 engine, boasting 295 horsepower and 335 ft. lbs. of torque. This powerplant is paired with a smooth-shifting 4-speed automatic transmission, delivering the kind of performance that can handle heavy loads and challenging terrains with ease.

The Sierra doesn't skimp on convenience features. Power windows and power door locks streamline your interactions with the vehicle, while the multi-function remote with keyless entry adds a layer of ease to your busy life. The auto-dimming rearview mirror ensures that you're not blinded by the lights of trailing vehicles, enhancing safety and comfort during night-time drives.

Safety is paramount, and this Sierra 1500 Classic is equipped with 4-wheel ABS, providing superior stopping power in critical situations. The



power-adjustable side mirrors, front fog lights, and daytime running lights enhance visibility, ensuring that you're both seen and able to see, no matter the conditions.

The 2007 GMC Sierra 1500 Classic SLE1 is not just a truck; it's a symbol of hard work, reliability, and a commitment to excellence. Don't miss your chance to own a piece of automotive achievement. Embrace the power, indulge in the comfort, and join a legacy of satisfied drivers today.

This vehicle has been reduced at below wholesale prices.

READY for work and play! Give us a call today!

Can't make it in? We offer shipping all over the United States. Ask your salesperson for shipping quotes.

Financing is available with competitive rates! Get pre-approved in no time by filling out a credit application on the finance section of our website! We also offer industry leading, highly rated warranty options so you can select one perfect for your specific vehicle needs.

All vehicles are priced for QUICK SALE. Call us today to see how easy it is to buy a vehicle at Texas Motorcars.

Texas Motorcars in Addison is a family owned and operated business. We are committed to delivering the best possible service!

Se habla Español!

Texas Motorcars "A Better Way To Buy!"

2007 GMC Sierra 1500 Classic SLE1

Texas Motorcars - 972-521-7788 - View this car on our website at texasmotorcars.com/7303292/ebrochure

Vehicle History Report : as Of 05/08/2024

CARFAX

Snapshot

2007 GMC SIERRA 1500 CLASSIC SLE1



Minor to moderate damage



MINOR MODERATE SEVERE

9 Service history records



2 Previous owners



Personal vehicle



218,539 Last reported odometer reading



FREE CARFAX Report

See the full CARFAX Report for additional information

*carfax Snapshot is a reflection of available information on the date the report was pulled. carfax is constantly being updated with new information and is subject to change at any time.

Our Location :



2007 GMC Sierra 1500 Classic SLE1

Texas Motorcars - 972-521-7788 - View this car on our website at texasmotorcars.com/7303292/ebrochure

Installed Options

Interior

- Front air conditioning- Front air conditioning zones: dual- Rear vents: second row
- Armrests: rear center folding with storage- Floor mat material: rubber/vinyl
- Floor mats: front- Steering wheel trim: leather- Cruise control
- Multi-function remote: keyless entry- Power outlet(s): 12V front- Power steering
- Rearview mirror: auto-dimming- Clock- Compass- External temperature display
- Powertrain hour meter- Front seat type: 40-20-40 split bench
- Rear seat folding: one-piece- Rear seat type: bench- Upholstery: premium cloth

Exterior

- Front bumper color: chrome- Pickup bed light- Daytime running lights- Front fog lights
- Side mirror adjustments: power- Side mirrors: driver side only heated
- Spare wheel type: steel- Wheels: chrome steel- Power windows- Rear privacy glass
- Window defogger: rear

texasmotorcars.com

972-521-7788

16000 Midway Rd

Addison, Texas 75001

© 2024 AutoRevo - All rights reserved. - Powered by AutoRevo