

# 2024 Ford F-150 XLT

View this car on our website at [askjorgelopez.com/7303137/ebrochure](http://askjorgelopez.com/7303137/ebrochure)

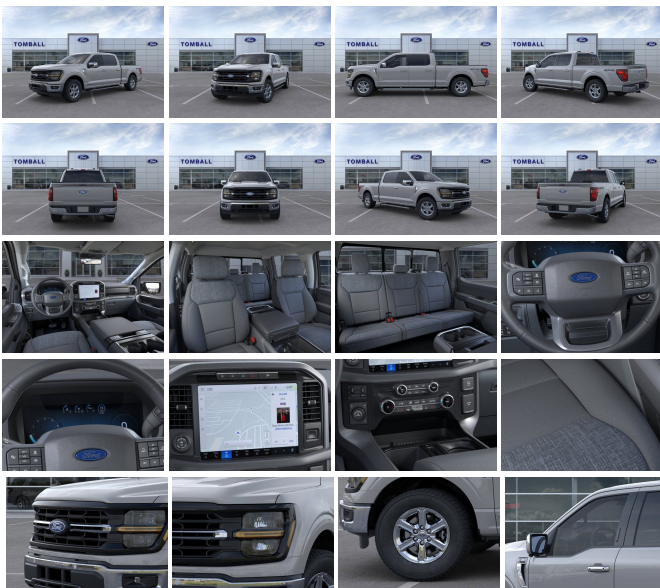


Our Price **\$62,775**

Retail Value **\$66,675**

## Specifications:

<b>Year:</b>	2024
<b>VIN:</b>	1FTFW3LDXRFA41853
<b>Make:</b>	Ford
<b>Stock:</b>	FA41853
<b>Model/Trim:</b>	F-150 XLT
<b>Condition:</b>	New
<b>Body:</b>	Pickup Truck
<b>Exterior:</b>	AVALANCHE
<b>Engine:</b>	PowerBoost 3.5L Hybrid Twin Turbo V6 430hp 570ft. lbs.
<b>Interior:</b>	DARK SLATE Cloth
<b>Transmission:</b>	10-Speed Shiftable Automatic
<b>Mileage:</b>	58
<b>Drivetrain:</b>	4 Wheel Drive



"Feel at ease with this dependable 2024 Ford F-150. Tire Specific Low Tire Pressure Warning, Side Impact Beams, Safety Canopy System Curtain 1st And 2nd Row Airbags, Right Side Camera, Reverse Sensing System Rear Parking Sensors.\*Fully-Loaded with Additional Options\*TOW/HAUL PACKAGE -inc: upgraded rear bumper, Integrated Trailer Brake Controller, MOBILE OFFICE PACKAGE -inc: Partitioned Lockable Rear Storage, Console Worksurface, 400W Cab & Bed Outlets, ENGINE: 3.5L POWERBOOST FULL-HYBRID V6 -inc: Pro Power Onboard 2.4KW and removes 36 gallon fuel tank, GVWR: 7,400 lbs Payload Package, Electronic Locking w/3.73 Axle Ratio, MOBILE OFFICE PACKAGE -inc: Partitioned Lockable Rear Storage, Console Worksurface, 400W Cab & Bed Outlets, FRONT LICENSE PLATE BRACKET -inc: Standard in states where required by law, optional to all others, EQUIPMENT GROUP 302A MID -inc: Adaptive Cruise Control w/Stop & Go, lane centering, Speed Sign Recognition, Intelligent Access w/Push Button Start, approach detection, Ford BlueCruise Equipped (90-Day Trial), See [ford.com/bluecruise](http://ford.com/bluecruise) for version details, Power-Sliding Rear Window, Remote Start System w/Remote Tailgate Release, Heated Front Seats, Power Glass Heated Sideview Mirrors, manual folding, turn signals, high-intensity LED security approach lamps, LED sideview mirror spotlights and chrome skull caps, Auto-Dimming Rearview Mirror, ENGINE: 3.5L POWERBOOST FULL-HYBRID V6 -inc: Pro Power Onboard 2.4KW and removes 36 gallon fuel tank, GVWR: 7,400 lbs Payload Package, Electronic Locking w/3.73 Axle Ratio, ELECTRONIC LOCKING W/3.73 AXLE RATIO, AVALANCHE, Wheels: 18" Chrome-Like PVD.\* Stop By Today \*A short visit to Tomball Ford located at 22702 Tomball Parkway, Tomball, TX 77375 can get you a tried-and-true F-150 today!"

2024 Ford F-150 XLT

Ask Jorge Lopez - 281-205-0352 - View this car on our website at [askjorgelopez.com/7303137/ebrochure](http://askjorgelopez.com/7303137/ebrochure)

### Vehicle History Report : as Of 05/02/2024



#### Snapshot

2024 FORD F-150 XLT



No accidents or damage reported to CARFAX



1 Service history record



2 Detailed records available



2 Last reported odometer reading



**FREE CARFAX Report**

See the full CARFAX Report for additional information

\*carfax Snapshot is a reflection of available information on the date the report was pulled. carfax is constantly being updated with new information and is subject to change at any time.

### Our Location :



2024 Ford F-150 XLT

Ask Jorge Lopez - 281-205-0352 - View this car on our website at [askjorgelopez.com/7303137/ebrochure](http://askjorgelopez.com/7303137/ebrochure)

## Installed Options

### Interior

- Air filtration- Front air conditioning: automatic climate control
- Front air conditioning zones: dual- Floor mat material: carpet- Floor mats: front
- Capless fuel filler system- Cruise control- Keypad entry
- Multi-function remote: keyless entry- Power outlet(s): 12V front- Power steering
- Rearview mirror: auto-dimming- Steering wheel: tilt and telescopic- Clock- Compass
- Customizable instrument cluster- Digital odometer- External temperature display
- Instrument cluster screen size: 12 in.- Multi-function display- Powertrain hour meter
- Trip odometer- Driver seat power adjustments: 8- Front seat type: 40-20-40 split bench
- Rear seat folding: folds up- Rear seat type: 60-40 split bench - Upholstery: cloth

### Exterior

- Active grille shutters- Door handle color: chrome- Front bumper color: chrome
- Grille color: black with chrome accents - Pickup bed light- Running boards
- Tailgate: lift assist- Daytime running lights: LED- Exterior entry lights: approach lamps
- Front fog lights: cornering- Side mirrors: heated- Spare wheel type: steel
- Tire Pressure Monitoring System- Wheels: chrome- Front wipers: variable intermittent
- Laminated glass: acoustic windshield- Power windows: safety reverse
- Rear privacy glass- Solar-tinted glass: rear- Window defogger: rear

---

Ask Jorge Lopez  
[askjorgelopez.com](http://askjorgelopez.com)  
281-205-0352

22702 Tomball Parkway  
Tomball, TX 77375

© 2024 AutoRevo - All rights reserved. - Powered by [AutoRevo](#)