

2024 Ford Expedition MAX Limited

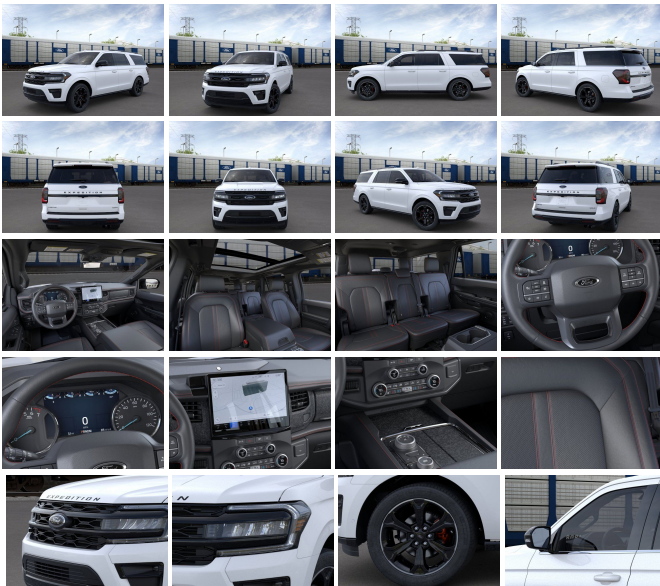
View this car on our website at askjorgelopez.com/7303108/ebrochure



Our Price **\$88,825**

Specifications:

Year:	2024
VIN:	1FMJK2AG2REA54210
Make:	Ford
Stock:	EA54210
Model/Trim:	Expedition MAX Limited
Condition:	New
Body:	SUV
Exterior:	STAR WHITE MET TRI-COAT
Engine:	EcoBoost 3.5L Twin Turbo V6 380hp 470ft. lbs.
Interior:	BLACK LEATHER
Transmission:	10-Speed Shiftable Automatic
Mileage:	22
Drivetrain:	4 Wheel Drive



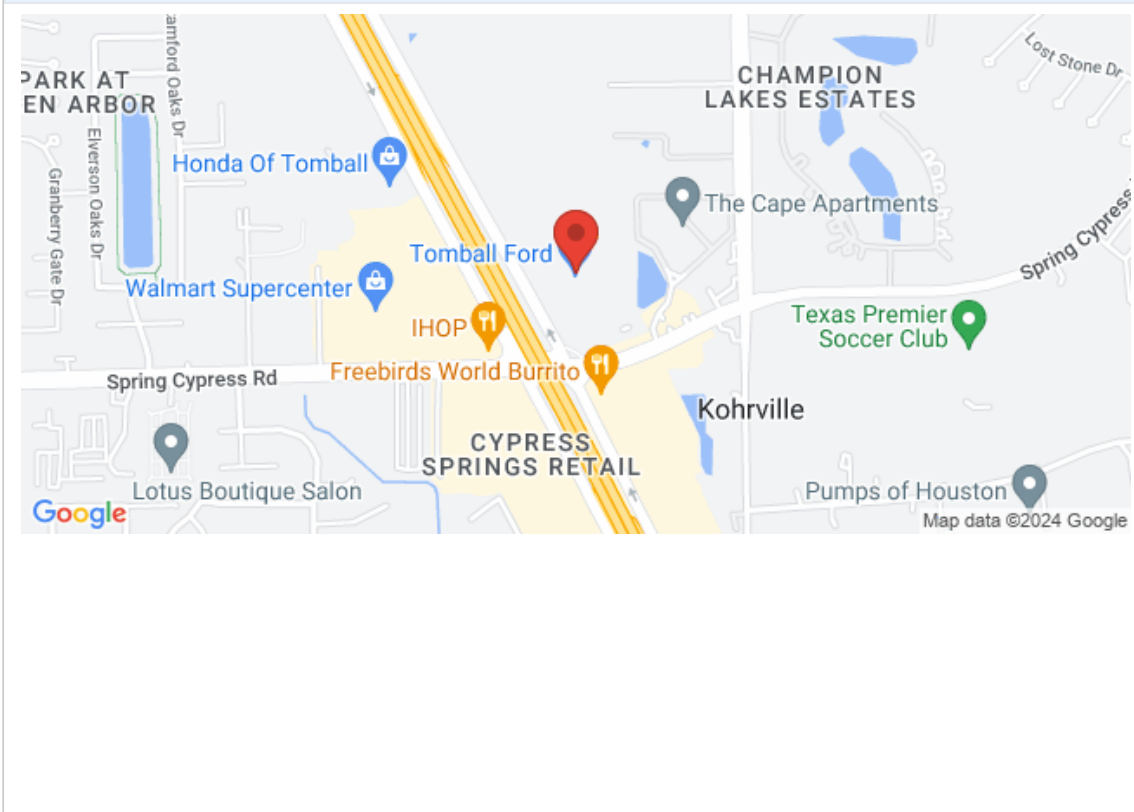
"You'll have no regrets driving this dependable 2024 Ford Expedition Max. Tire Specific Low Tire Pressure Warning, Side Impact Beams, Safety Canopy System Curtain 1st, 2nd And 3rd Row Airbags, Rear Child Safety Locks, Outboard Front Lap And Shoulder Safety Belts -inc: Height Adjusters and Pretensioners.*Fully-Loaded with Additional Options*EQUIPMENT GROUP 304A STEALTH PERFORMANCE PACKAGE -inc: 3.73 Axle Ratio, non-limited-slip rear axle, 1st & 2nd Row Floor Mats w/Logo, Ford Co-Pilot360 Assist 2.0, Connected Navigation, 1 year of connectivity, pinch-to-zoom capability, live traffic, predictive destinations and route guidance, Reverse Brake Assist, 360-Degree Camera w/Split View, front/rear washer, Engine: 3.5L V6 EcoBoost High Output, Wheels: 22" Premium Black-Painted Aluminum, Stealth Performance Edition Package, Sport Center Console, Black Roof Rack Side Rails, Black Limited Tailgate Badge, LED Taillamp w/Black Bezels, Black Headlamp and Fog Lamp Bezels, Sport Tuned Suspension, Expedition Lettering on Hood, Ebony Black Bar and Mesh Grille, Ebony Black Tailgate Applique, Enhanced Active Noise Control, engine sound enhancement, Body Color Door Handles, Power-Folding Sideview Mirrors w/Autofold, power and heated glass, turn signal indicators, security approach lamps, driver/passenger side memory, driver's side auto-dimmi, STAR WHITE METALLIC TRI-COAT, FRONT LICENSE PLATE BRACKET -inc: Standard in states requiring two license plates and optional to all others, EQUIPMENT GROUP 304A STEALTH PERFORMANCE PACKAGE -inc: 3.73 Axle Ratio, non-limited-slip rear axle, 1st & 2nd Row Floor Mats w/Logo, Ford Co-Pilot360 Assist 2.0, Connected Navigation, 1 year of connectivity, pinch-to-zoom capability, live traffic, predictive destinations and route guidance, Reverse Brake Assist, 360-Degree Camera w/Split View, front/rear washer, Engine: 3.5L V6 EcoBoost High Output, Wheels: 22" Premium Black-Painted Aluminum, Stealth Performance Edition Package, Sport Center Console, Black Roof Rack Side Rails, Black

Limited Tailgate Badge, LED Taillamp w/Black Bezels, Black Headlamp and Fog Lamp Bezels, Sport Tuned Suspension, Expedition Lettering on Hood, Ebony Black Bar and Mesh Grille, Ebony Black Tailgate Applique, Enhanced Active Noise Control, engine sound enhancement, Body Color Door Handles, Power-Folding Sideview Mirrors w/Autofold, power and heated glass, turn signal indicators, security approach lamps, driver/passenger side memory, driver's side auto-dimmi, ENGINE: 3.5L V6 ECOBOOST HIGH OUTPUT, 2ND ROW POWER-FOLDING 40/20/40 LEATHER BENCH SEAT -inc: 8-passenger seating, tip-and-slide feature, 1ST & 2ND ROW FLOOR LINERS W/CARPET MATS, Wireless Phone Connectivity, Window Grid Antenna, Wheels: 20" Bright Machined Aluminum -inc: dark carbonized gray-painted pockets. * Stop By Today * Stop by Tomball Ford located at 22702 Tomball Parkway, Tomball, TX 77375 for a quick visit and a great vehicle!"

2024 Ford Expedition MAX Limited

Ask Jorge Lopez - 281-205-0352 - View this car on our website at askjorgelopez.com/7303108/ebrochure

Our Location :



2024 Ford Expedition MAX Limited

Ask Jorge Lopez - 281-205-0352 - View this car on our website at askjorgelopez.com/7303108/ebrochure

Installed Options

Interior

- Air filtration- Front air conditioning: automatic climate control
- Front air conditioning zones: dual- Rear air conditioning: automatic climate control
- Rear vents: third row- Floor mat material: carpet- Floor mats: front
- Heated steering wheel- Steering wheel trim: leather- Adaptive cruise control
- Adaptive stop and go cruise control: semi-automatic- Adjustable pedals: power
- Ambient lighting- Autonomous lane guidance: lane centering- Capless fuel filler system
- Cargo area light- Easy entry: power rear seat- Keypad entry
- Memorized settings: 3 driver- Power outlet(s): 115V rear
- Power steering: variable/speed-proportional- Push-button start
- Rearview mirror: auto-dimming- Remote engine start
- Steering wheel: power tilt and telescopic
- Universal remote transmitter: garage door opener- Wireless charging station: front- Clock
- Compass- Customizable instrument cluster- Digital odometer
- External temperature display- Instrument cluster screen size: 8 in.- Multi-function display
- Trip odometer- Driver seat: heated- Driver seat power adjustments: 10
- Front seat type: bucket- Passenger seat: heated- Passenger seat power adjustments: 8
- Rear seat: heated- Rear seat folding: flat- Rear seat power adjustments: reclining
- Rear seat type: captains chairs- Third row seat folding: fold flat into floor
- Third row seat type: 40-60 split bench - Upholstery: leather-trimmed

Exterior

- Active grille shutters- Door handle color: body-color with chrome accents
- Grille color: black with chrome accents - Mirror color: body-color- Running boards
- Daytime running lights- Exterior entry lights: approach lamps- Front fog lights: LED
- Taillights: LED- Side mirror adjustments: power- Side mirrors: heated- Roof rails: chrome
- Spare wheel type: steel- Tire Pressure Monitoring System
- Wheels: aluminum alloy with painted accents- Laminated glass: acoustic windshield
- Liftgate window: manual flip-up- Power windows: safety reverse- Rear privacy glass
- Rear wiper: intermittent- Solar-tinted glass: front- Window defogger: rear

Ask Jorge Lopez

askjorgelopez.com

281-205-0352

22702 Tomball Parkway

Tomball, TX 77375

© 2024 AutoRevo - All rights reserved. - Powered by AutoRevo