

# 2010 Ford Edge SEL

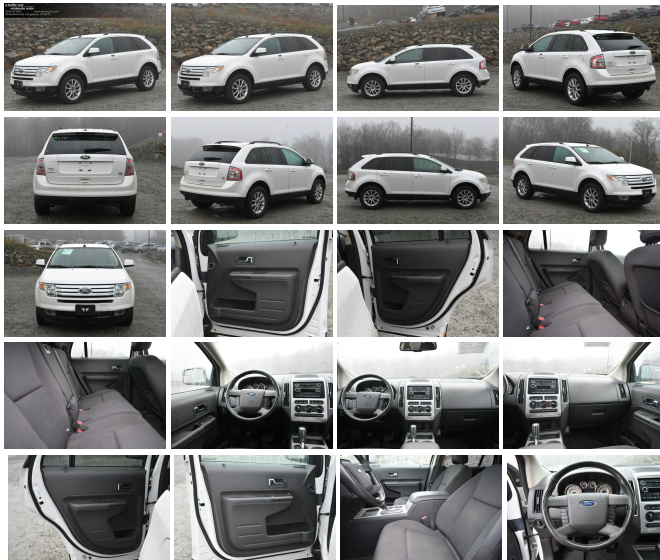
View this car on our website at [abwautos.com/7302771/ebrochure](http://abwautos.com/7302771/ebrochure)



Our Price **\$8,995**

## Specifications:

<b>Year:</b>	2010
<b>VIN:</b>	2FMDK4JC8ABB31670
<b>Make:</b>	Ford
<b>Stock:</b>	B31670A
<b>Model/Trim:</b>	Edge SEL
<b>Condition:</b>	Pre-Owned
<b>Body:</b>	SUV
<b>Exterior:</b>	[UG] White Platinum Metallic Tri-Coat
<b>Engine:</b>	3.5L V6 265hp 250ft. lbs.
<b>Interior:</b>	Charcoal Black Cloth
<b>Transmission:</b>	Automatic
<b>Mileage:</b>	73,700
<b>Drivetrain:</b>	All Wheel Drive
<b>Economy:</b>	City 17 / Highway 23

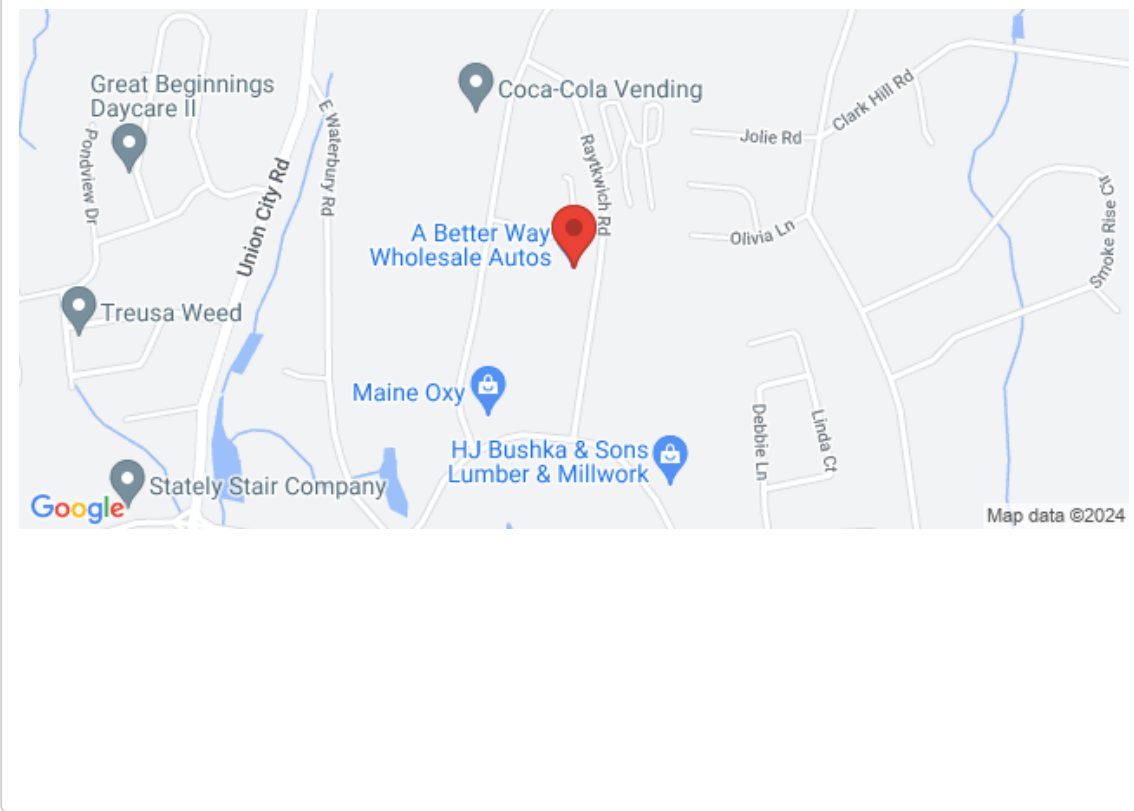


For sale at A Better Way Wholesale Autos - 2023 DealerRater Consumer Satisfaction Award winner - Connecticut's highest volume independent auto dealer! We have the area's largest selection of pre-owned vehicles at the lowest prices available, over 700 in stock to choose from! Financing for all credit tiers and extended warranties available. Please contact our sales department for more information about this vehicle or the rest of our inventory. Call 203-720-5600, view our website [www.abwautos.com](http://www.abwautos.com), or visit our showroom in Naugatuck, CT. Open 7 days a week!

2010 Ford Edge SEL

A Better Way Wholesale Autos-CT - 203-720-5600 - View this car on our website at [abwautos.com/7302771/ebrochure](http://abwautos.com/7302771/ebrochure)

**Our Location :**



2010 Ford Edge SEL

A Better Way Wholesale Autos-CT - 203-720-5600 - View this car on our website at [abwautos.com/7302771/ebrochure](http://abwautos.com/7302771/ebrochure)

**Installed Options**

**Interior**

- Front air conditioning: automatic climate control- Rear vents: second row- Dash trim: alloy
- Floor mat material: carpet- Floor mats: front- Shift knob trim: leather
- Steering wheel trim: leather- Cargo area light- Cruise control- Keypad entry
- Multi-function remote: keyless entry- Power outlet(s): 12V- Power steering
- Rearview mirror: auto-dimming- Steering wheel: tilt and telescopic- Compass
- Multi-function display- Driver seat power adjustments: 6- Front seat type: bucket
- Rear seat folding- Rear seat type: 60-40 split bench - Upholstery: cloth

**Exterior**

- Exhaust: dual tip- Mirror color: body-color- Front fog lights- Spare wheel type: steel
- Tire Pressure Monitoring System- Wheels: painted aluminum alloy- Power windows
- Rear privacy glass- Rear wiper: dual speed- Window defogger: rear

**Option Packages**

**Factory Installed Packages**

Roof Rack	\$95
White Platinum Metallic Tricoat Paint	\$495
Rapid Spec 200A Includes vehicle with standard equipment.	
<b>Option Packages Total</b>	<b>\$590</b>

REGARDING STATE STATUTE AND REGULATORY COMPLIANCE: THIS ADVERTISEMENT DOES NOT CONSTITUTE AN OFFER TO SELL OR PURCHASE A VEHICLE. AN OFFER FOR SALE OR PURCHASE MAY ONLY BE MADE IN PERSON IN OUR SHOWROOM VIA THE PRESENTATION OF A PURCHASE ORDER, COMPLETED IN ITS ENTIRETY. Some vehicles may still be in process and therefore may not be available for immediate sale. Included Accessories: We try our best to procure books and extra keys from the previous owners. With that said, we do not always have spare keys, books, floor mats, or other accessories for every vehicle. In most cases we can only provide the accessories that are photographed. For instance, if we show a navigation display with a map, there is a navigation disc with the car. If you do not see it, assume the item is not included. We encourage you to email or call us if you are concerned about specific items like floor mats, spare keys, nav discs, DVD headsets, etc. The description of vehicles provided by AutoRevo is generated through the use of artificial intelligence and machine learning algorithms. While every effort is made to ensure accuracy, AutoRevo cannot guarantee the completeness or reliability of the information provided. The description is intended to be used as a general guide and should not be relied upon as a substitute for independent investigation and verification. Neither A Better Way Wholesale Autos nor AutoRevo shall be liable for any errors or omissions in the description and makes no representation or warranty, express or implied, about the accuracy, reliability, completeness, or timeliness of the information. The user assumes all risks associated with the use of

the information provided. Fuel Economy: MPG based on and sourced from&nbsp;EPA mileage estimates. Use for comparison purposes only. Your actual mileage will vary depending on driving habits and vehicle maintenance. Advertised price does not include state or local taxes, registration costs or dealer conveyance fee of \$798.00. Some vehicles in our inventory have been used as a daily rental. See commercially available history reports to see if this disclaimer applies to any particular vehicle.

---

A Better Way Wholesale Autos-CT

[abwautos.com](http://abwautos.com)

203-720-5600

49 Raytkwich Rd

Naugatuck, Connecticut 06770

© 2024 AutoRevo - All rights reserved. - [Powered by AutoRevo](#)