

## 2018 Lexus RX 350 F-SPORT

View this car on our website at [autosourcehawaii.com/7302436/ebrochure](https://autosourcehawaii.com/7302436/ebrochure)

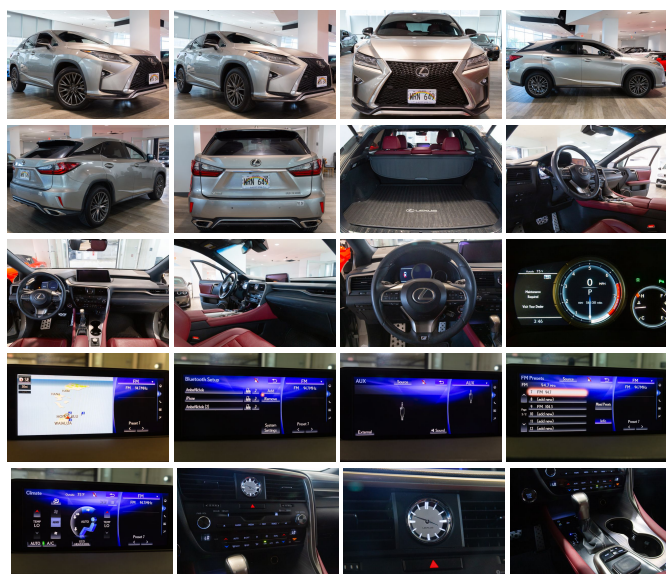


Our Price **\$36,995**

Retail Value ~~\$39,995~~

### Specifications:

<b>Year:</b>	2018
<b>VIN:</b>	2T2ZZMCA1JC111491
<b>Make:</b>	Lexus
<b>Stock:</b>	A000061
<b>Model/Trim:</b>	RX 350 F-SPORT
<b>Condition:</b>	New
<b>Body:</b>	SUV
<b>Exterior:</b>	[1J7] Atomic Silver
<b>Engine:</b>	3.5L V6 295hp 267ft. lbs.
<b>Interior:</b>	Rioja Red w/Scored Aluminum Trim Leather
<b>Transmission:</b>	8-Speed Shifttable Automatic
<b>Mileage:</b>	56,125
<b>Drivetrain:</b>	Front Wheel Drive
<b>Economy:</b>	City 20 / Highway 27



2018 Lexus RX 350 F-SPORT

Autosource Hawaii - (808) 597-8522 - View this car on our website at [autosourcehawaii.com/7302436/ebrochure](https://autosourcehawaii.com/7302436/ebrochure)

Vehicle History Report : as Of 05/21/2024



Snapshot

2018 LEXUS RX 350 F SPORT



Minor to moderate damage



2 Service history records



2 Previous owners



Types of owners: Personal lease, Lease



56,125 Last reported odometer reading



**FREE CARFAX Report**

See the full CARFAX Report for additional information

\*carfax Snapshot is a reflection of available information on the date the report was pulled. carfax is constantly being updated with new information and is subject to change at any time.

Our Location :



2018 Lexus RX 350 F-SPORT

Autosource Hawaii - (808) 597-8522 - View this car on our website at [autosourcehawaii.com/7302436/ebrochure](https://autosourcehawaii.com/7302436/ebrochure)

## Installed Options

### Interior

- Air filtration- Front air conditioning: automatic climate control
- Front air conditioning zones: dual- Rear vents: second row
- Armrests: rear center folding with storage- Center console trim: aluminum
- Door sill trim: aluminum- Door trim: aluminum- Floor mat material: carpet
- Floor mats: front- Foot pedal trim: aluminum- Heated steering wheel
- Interior accents: aluminum- Shift knob trim: leather- Steering wheel trim: leather
- Adaptive cruise control- Adaptive stop and go cruise control: semi-automatic
- Ambient lighting- Cargo area light- Cargo cover: retractable
- Easy entry: power driver seat- Footwell lights- Memorized settings: 3 driver
- Power outlet(s): 12V cargo area- Power steering: variable/speed-proportional
- Push-button start- Rearview mirror: auto-dimming
- Steering wheel: power tilt and telescopic- Touch-sensitive controls
- Universal remote transmitter: Homelink - garage door opener - Clock- Compass
- Digital odometer- External temperature display- Multi-function display- Trip odometer
- Driver seat: heated- Driver seat power adjustments: 10- Front seat type: sport bucket
- Passenger seat: heated- Passenger seat power adjustments: 10- Rear seat folding: split
- Rear seat type: 40-20-40 split bench - Upholstery: leather-trimmed

### Exterior

- Exhaust: dual tip- Front bumper color: body-color- Ground effects/lower spoilers
- Rear spoiler: roofline- Daytime running lights: LED- Exterior entry lights: approach lamps
- Front fog lights: LED- Taillights: LED- Side mirror adjustments: power
- Side mirrors: auto-dimming- Spare wheel type: steel- Tire Pressure Monitoring System
- Wheels: painted aluminum alloy- Front wipers: rain sensing
- Laminated glass: acoustic windshield- Power windows: safety reverse
- Rear privacy glass- Rear wiper: intermittent- Solar-tinted glass- Window defogger: rear

Autosource Hawaii

[autosourcehawaii.com](https://autosourcehawaii.com)

(808) 597-8522

1488 Kapiolani Blvd

Honolulu, HI 96814

© 2024 AutoRevo - All rights reserved. - Powered by AutoRevo