

## 2013 Nissan Altima 2.5 S

View this car on our website at [importsandmore.net/7302263/ebrochure](http://importsandmore.net/7302263/ebrochure)

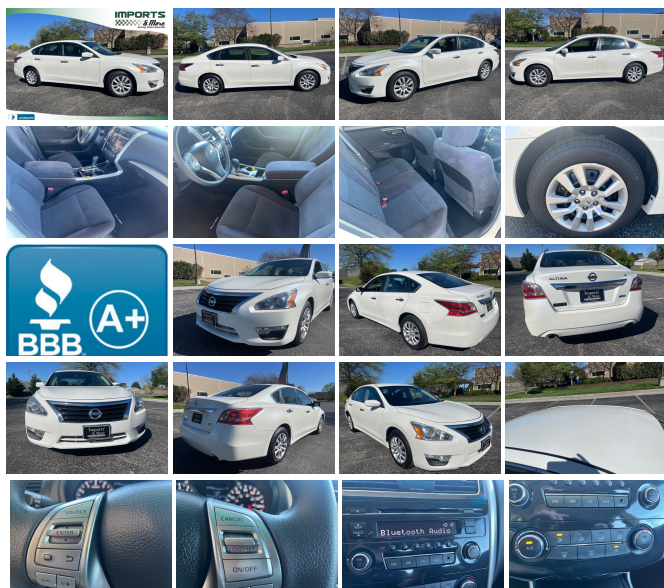


Our Price **\$12,950**

### Specifications:

Year:	2013
VIN:	1N4AL3AP5DN584869
Make:	Nissan
Stock:	16265
Model/Trim:	Altima 2.5 S
Condition:	Pre-Owned
Body:	Sedan
Exterior:	[QAB] Pearl White
Engine:	2.5L I4 182hp 180ft. lbs.
Interior:	Charcoal Cloth
Transmission:	Automatic
Mileage:	59,960
Drivetrain:	Front Wheel Drive
Economy:	City 27 / Highway 38

ONE OWNER 59k MILES!!! VERY CLEAN CONDITION! ALTIMA 2.5S, YES, under \$13000 with NO Dealer Doc Fees, LOW miles! Automatic, AC, BACKUP CAMERA, all power, factory wheels! cruise, NICE INTERIOR! CD/AUX stereo, NICE TIRES AND Excellent brakes, \*\*\* FULLY SERVICED AND INSPECTED, Drives great, CARFAX/ AUTOCHECK CERTIFIED, ASE inspection and road test, Come see a great IMPORT at this price point! GREAT VALUE AT THIS PRICE POINT!! A LOT OF RELIABLE MILES LEFT IN THIS CAR!! Serving you since 1998, A+ member of Better Business Bureau



2013 Nissan Altima 2.5 S

Imports and More Inc - (865) 988-4133 - View this car on our website at [importsandmore.net/7302263/ebrochure](http://importsandmore.net/7302263/ebrochure)

## Our Location :



2013 Nissan Altima 2.5 S

Imports and More Inc - (865) 988-4133 - View this car on our website at [importsandmore.net/7302263/ebrochure](https://importsandmore.net/7302263/ebrochure)

## Installed Options

### Interior

- Air filtration- Front air conditioning- Rear vents: second row
- Armrests: rear center folding with storage- Interior accents: chrome- Cargo area light
- Cruise control- Multi-function remote: proximity entry system
- Power outlet(s): two 12V front- Power steering- Push-button start
- Steering wheel: tilt and telescopic- Clock- External temperature display
- Multi-function display- Trip odometer- Driver seat power adjustments: 6
- Front seat type: bucket- Rear seat folding: split- Rear seat type: 60-40 split bench
- Upholstery: cloth

### Exterior

- Door handle color: chrome- Exhaust: dual tip- Front bumper color: body-color
- Mirror color: body-color- Side mirror adjustments: power- Spare wheel type: steel
- Tire Pressure Monitoring System- Wheels: steel- Front wipers: variable intermittent
- Window defogger: rear

Imports and More Inc

[importsandmore.net](https://importsandmore.net)

(865) 988-4133

10504 Highway 11 E

Lenoir City, TN 37772

© 2024 AutoRevo - All rights reserved. - Powered by AutoRevo