

2013 Volkswagen Beetle 2.5L PZEV

View this car on our website at dougjustus.com/7302006/ebrochure



Our Price **\$9,850**

Specifications:

| | |
|----------------------|--------------------------------|
| Year: | 2013 |
| VIN: | 3VWJP7AT6DM691472 |
| Make: | Volkswagen |
| Stock: | V91472 |
| Model/Trim: | Beetle 2.5L PZEV |
| Condition: | Pre-Owned |
| Body: | Hatchback |
| Exterior: | WHITE |
| Engine: | 2.5L I5 170hp 177ft. lbs. PZEV |
| Interior: | Black Leatherette |
| Transmission: | 6-Speed Shiftable Automatic |
| Mileage: | 108,136 |
| Drivetrain: | Front Wheel Drive |
| Economy: | City 22 / Highway 29 |

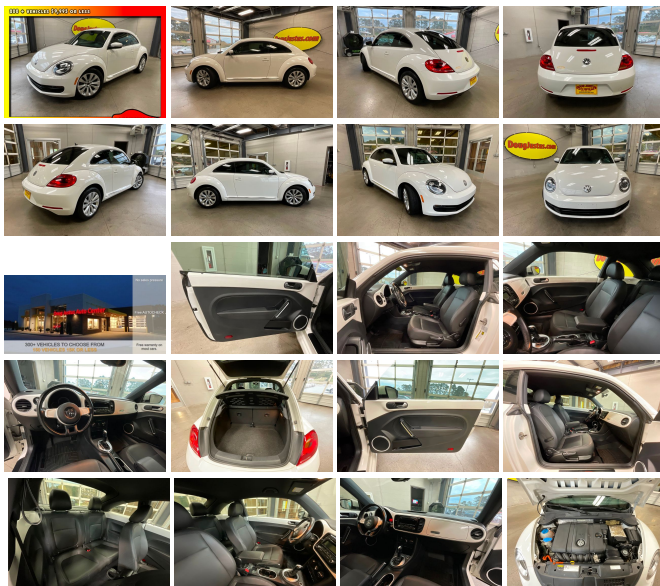
2013 Volkswagen Beetle 2.5L gets up to 29 mpg highway. This automatic, front wheel drive, 2 door, sub-compact coupe comes equipped with a 2.5L, five cylinder engine, power windows, power locks, cruise control, leatherette seats, heated seats and more.

Locally owned and operated in the Knoxville area of East Tennessee for over 20 years. Come see why over half of our business comes from repeat customers and referrals!

Have questions or need more info? Please contact our non-commission staff!

Visit: dougjustus.com
Call: 865-281-1540
Text: 865-214-0010

Thank you and we look forward to seeing you!



Vehicle History Report : as Of 05/19/2024

CARFAX

Snapshot

2013 VOLKSWAGEN BEETLE 2.5L PZEV



Structural damage reported



Regular oil changes



2 Previous owners



Types of owners: Personal lease
Personal



Last owned in Virginia



108,136 Last reported odometer reading



FREE CARFAX Report

See the full CARFAX Report for additional information

*carfax Snapshot is a reflection of available information on the date the report was pulled. carfax is constantly being updated with new information and is subject to change at any time.

Our Location :



2013 Volkswagen Beetle 2.5L PZEV

Doug Justus Auto Center Inc - (865)281-1540 - View this car on our website at dougjustus.com/7302006/ebrochure

Installed Options

Interior

- Air filtration- Front air conditioning- Floor mat material: carpet- Floor mats: front
- Interior accents: chrome- Steering wheel trim: leather- Ambient lighting- Cargo area light
- Cruise control- Multi-function remote: keyless entry- Power outlet(s): 12V front
- Power steering- Steering wheel: tilt and telescopic- Clock- External temperature display
- Multi-function display- Trip odometer- Driver seat: heated- Front seat type: bucket
- Passenger seat: heated- Rear seat folding: split- Rear seat type: 50-50 split bench
- Upholstery: leatherette

Exterior

- Front bumper color: body-color- Mirror color: body-color- Daytime running lights
- Side mirrors: heated- Spare wheel type: steel- Tire Pressure Monitoring System
- Wheels: aluminum alloy- Front wipers: variable intermittent
- Heated windshield washer jets- Power windows: safety reverse- Window defogger: rear

Doug Justus Auto Center Inc

dougjustus.com

(865)281-1540

872 Mimosa Heights Dr.

Airport Motor Mile (Alcoa) , TN 37777

© 2024 AutoRevo - All rights reserved. - Powered by [AutoRevo](#)