

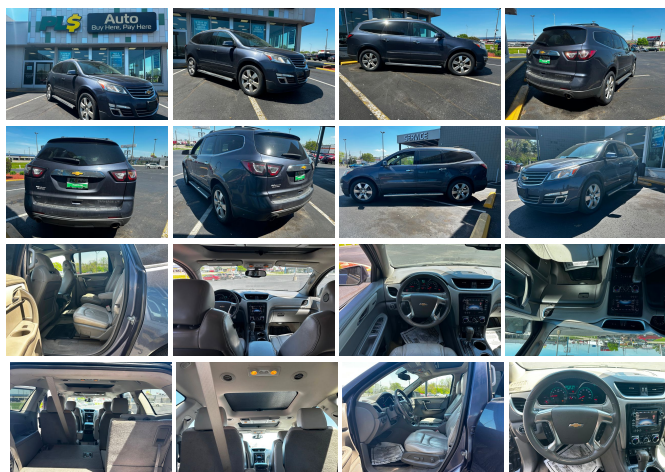
## 2013 Chevrolet Traverse LTZ

View this car on our website at [plsautoindy.com/7301659/ebrochure](http://plsautoindy.com/7301659/ebrochure)



### Specifications:

<b>Year:</b>	2013
<b>VIN:</b>	1GNKVLKD2DJ112253
<b>Make:</b>	Chevrolet
<b>Stock:</b>	5710PS
<b>Model/Trim:</b>	Traverse LTZ
<b>Condition:</b>	Pre-Owned
<b>Body:</b>	SUV
<b>Exterior:</b>	BLUE
<b>Engine:</b>	3.6L V6 281hp 266ft. lbs.
<b>Interior:</b>	Leather
<b>Transmission:</b>	6-Speed Shiftable Automatic
<b>Mileage:</b>	168,490
<b>Drivetrain:</b>	All Wheel Drive
<b>Economy:</b>	City 16 / Highway 23



2013 Chevrolet Traverse LTZ

PLS Auto - Indianapolis - (317) 677-1422 - View this car on our website at [plsautoindy.com/7301659/ebrochure](http://plsautoindy.com/7301659/ebrochure)

## Our Location :



2013 Chevrolet Traverse LTZ

PLS Auto - Indianapolis - (317) 677-1422 - View this car on our website at [plsautoindy.com/7301659/ebrochure](http://plsautoindy.com/7301659/ebrochure)

## Installed Options

### Interior

- Front air conditioning: automatic climate control
- Rear air conditioning: independently controlled
- Third row air conditioning: independently controlled- Floor mat material: carpet
- Floor mats: front- Heated steering wheel- Interior accents: woodgrain
- Steering wheel trim: leather- Ambient lighting- Cargo area light- Cruise control
- Memorized settings: 2 driver- Multi-function remote: keyless entry
- Power steering: variable/speed-proportional- Rearview mirror: auto-dimming
- Remote engine start- Steering wheel: tilt and telescopic- Storage: in floor
- Universal remote transmitter: Homelink - garage door opener - Compass
- External temperature display- Multi-function display- Trip odometer- Driver seat: cooled
- Driver seat power adjustments: 8- Front seat type: bucket - Passenger seat: cooled
- Passenger seat power adjustments: 8- Rear seat folding: flat
- Rear seat type: captains chairs- Third row seat folding: flat
- Third row seat type: 40-60 split bench - Upholstery: leather

### Exterior

- Door handle color: chrome- Exhaust: dual tip- Mirror color: body-color- Rear spoiler
- Daytime running lights- Front fog lights- Side mirror adjustments: power
- Side mirrors: driver side auto-dimming- Roof rails: black- Spare wheel type: steel
- Tire Pressure Monitoring System- Wheels: aluminum alloy- Power windows
- Rear wiper: intermittent- Solar-tinted glass- Window defogger: rear

---

PLS Auto - Indianapolis

[plsautoindy.com](http://plsautoindy.com)

(317) 677-1422

4701 W 38th St

Indianapolis, IN 46254

© 2024 AutoRevo - All rights reserved. - Powered by AutoRevo