

# 2019 Honda Fit EX

**Michael Nixon 541-499-8821**

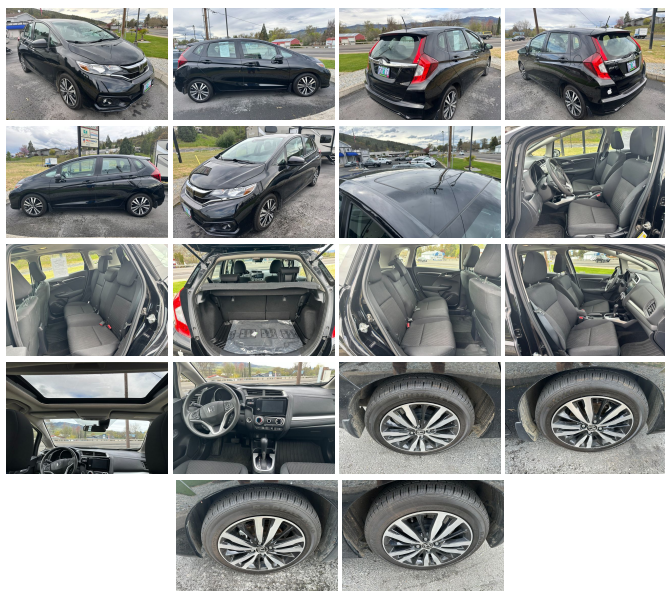
View this car on our website at [ashlandmotorcompany.com/7301577/ebrochure](http://ashlandmotorcompany.com/7301577/ebrochure)



Website Price **\$20,500**

## Specifications:

**Year:** 2019  
**VIN:** 3HGGK5H86KM723210  
**Make:** Honda  
**Stock:** KM723210  
**Model/Trim:** Fit EX  
**Condition:** Pre-Owned  
**Body:** Hatchback  
**Exterior:** [BK] Crystal Black Pearl  
**Engine:** 1.5L I4 128hp 113ft. lbs.  
**Interior:** Black Cloth  
**Transmission:** 7-Speed Shifttable CVT  
**Mileage:** 37,498  
**Drivetrain:** Front Wheel Drive  
**Economy:** City 31 / Highway 36



2019 Honda Fit EX

Ashland Motor Company - 541-499-8821 - View this car on our website at [ashlandmotorcompany.com/7301577/ebrochure](http://ashlandmotorcompany.com/7301577/ebrochure)

## Vehicle History Report : as Of 05/02/2024



### Snapshot

#### 2019 HONDA FIT EX



No accidents or damage reported to CARFAX



14 Service history records



CARFAX 1-Owner vehicle



Personal vehicle



Last owned in Oregon



37,498 Last reported odometer reading



**FREE CARFAX Report**

See the full CARFAX Report for additional information

\*carfax Snapshot is a reflection of available information on the date the report was pulled. carfax is constantly being updated with new information and is subject to change at any time.

## Our Location :



2019 Honda Fit EX

Ashland Motor Company - 541-499-8821 - View this car on our website at [ashlandmotorcompany.com/7301577/ebrochure](http://ashlandmotorcompany.com/7301577/ebrochure)

## Installed Options

### Interior

- Air filtration- Front air conditioning- Floor mat material: carpet- Floor mats: front
- Adaptive cruise control- Autonomous lane guidance: lane centering- Cargo area light
- Multi-function remote: proximity entry system- Power outlet(s): 12V front- Power steering
- Push-button start- Steering wheel: tilt and telescopic- Clock- Digital odometer
- External temperature display- Multi-function display- Trip odometer
- Front seat type: bucket- Rear seat folding: flat- Rear seat type: 60-40 split bench
- Upholstery: cloth

### Exterior

- Front bumper color: body-color- Grille color: black with chrome accents
- Mirror color: body-color- Rear spoiler: roofline- Daytime running lights- Front fog lights
- Headlights: auto high beam dimmer- Taillights: LED- Spare wheel type: steel
- Tire Pressure Monitoring System- Wheels: aluminum alloy with painted accents
- Front wipers: variable intermittent- Power windows: safety reverse
- Rear wiper: intermittent- Window defogger: rear

---

Ashland Motor Company  
[ashlandmotorcompany.com](http://ashlandmotorcompany.com)  
541-499-8821

1705 Hwy. 99 North  
Ashland, OR 97520

© 2024 AutoRevo - All rights reserved. - Powered by [AutoRevo](#)