

2015 Nissan LEAF S 3 MONTH/3,000 MILE NATIONAL POWERTRAIN WARRANTY

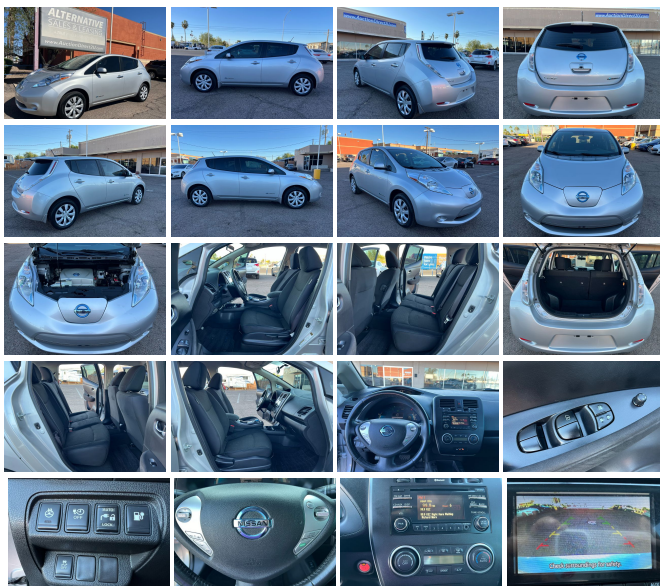
View this car on our website at auctiondirect2u.com/7301550/ebrochure



Our Price **\$4,812**

Specifications:

Year:	2015
VIN:	1N4AZ0CP8FC305777
Make:	Nissan
Model/Trim:	LEAF S 3 MONTH/3,000 MILE NATIONAL POWERTRAIN WARRANTY
Condition:	Pre-Owned
Body:	Hatchback
Exterior:	[K23] Brilliant Silver
Engine:	Electric 107hp 187ft. lbs.
Interior:	Black Cloth
Transmission:	1-Speed Direct-Drive Automatic
Mileage:	57,942
Drivetrain:	Front Wheel Drive



2015 NISSAN LEAF S Full Electric - 64k Actual Miles, 80kW AC synchronous electric motor -inc: normal & eco drive modes, 1-Speed Direct-Drive Automatic, Charger Pkg-inc: 6.0 kW output onboard charger, quick charge port, AM/FM/CD Player with Aux Input, Rearview Monitor, Bluetooth, Front And Rear Heated Seats, Keyless Go, Push Start Button, Power Windows/Locks/Mirrors, Cold AC, Heated Steering Wheels, Steering Wheel Controls. Clean Title, Per Carfax to shows an accident reported to the front end on 10/24/2022. Since then it has been repaired and shows no signs of damage. This is a trade-in we acquired. We are now offering it for sale to the public. Vehicle comes with a 3 Month/3,000 Mile National Powertrain Warranty. Financing available. VIN# 1N4AZ0CP8FC305777. \$4,812.00 (480)-468-1229 (Se Habla Español)

Here's the deal -- We are a high volume wholesale brokerage with very little overhead. Most of our vehicles are lease returns or bank repos that are acquired directly from the leasing institutions or banks. What makes us different is the fact that we sell these vehicles for the same amount that we acquire them for (Plus a broker fee of \$499.00 - which is included in the advertised price). That's it. . . . For that reason, we are seriously agitating a lot of dealers out there because we are revealing what they actually pay for their vehicles.

Now, if you were paying attention to that first part that means that you can acquire these vehicles for DEALER COST. (Hence the irritability of the dealers). We do not have any doc fees, hidden costs or surprises. AuctionDirect2U has been in business for 20 years and is a licensed, bonded and insured automotive dealership, so 8.30% sales tax and your registration will be the only other amounts added to your price.

These are the same vehicles that you will see at franchise and independent dealerships only priced FAR less. Unlike their big multi million dollar facilities, we have very little overhead. This allows us to pass the savings on and leave a little profitability on the table for you. We're not getting rich off of \$499.00, but our intention is to give enough people a great enough deal that through volume we can still be profitable at the end of the month.

All of our vehicles are under warranty. The majority are still covered under the manufacturers original warranty and if they aren't we acquire a minimum 90 day warranty through a reputable national chain which would assist if any failures should occur.

PRICING - The advertised price on each vehicle is the price we are going to sell it for. With such small margins we cannot haggle with you or lower the price. If you have any questions or would like to come see this vehicle, we can be reached at: (480) 468-1229.

2015 Nissan LEAF S 3 MONTH/3,000 MILE NATIONAL POWERTRAIN WARRANTY

Auction-Direct2U - (480) 468-1229 - View this car on our website at auctiondirect2u.com/7301550/ebrochure

Vehicle History Report : as Of 05/16/2024



Snapshot

2015 NISSAN LEAF S



Accident reported: very minor damage



8 Service history records



6 Previous owners



Types of owners: Personal lease, Personal



57,942 Last reported odometer reading



FREE CARFAX Report

See the full CARFAX Report for additional information

*carfax Snapshot is a reflection of available information on the date the report was pulled. carfax is constantly being updated with new information and is subject to change at any time.

Our Location :



2015 Nissan LEAF S 3 MONTH/3,000 MILE NATIONAL POWERTRAIN WARRANTY

Auction-Direct2U - (480) 468-1229 - View this car on our website at auctiondirect2u.com/7301550/ebrochure

Installed Options

Interior

- Air filtration- Front air conditioning: automatic climate control- Rear vents: second row
- Heated steering wheel- Shift knob trim: alloy- Steering wheel trim: leather
- Cargo area light- Cruise control- Multi-function remote: proximity entry system
- Power outlet(s): 12V front- Power steering: variable/speed-proportional- Push-button start
- Clock- Digital odometer- External temperature display- Multi-function display
- Trip odometer- Driver seat: heated- Front seat type: bucket- Passenger seat: heated
- Rear seat: heated- Rear seat folding: split- Rear seat type: 60-40 split bench
- Upholstery: cloth

Exterior

- Door handle color: chrome- Front bumper color: body-color- Mirror color: body-color
- Rear spoiler: roofline- Side mirrors: heated- Spare tire kit: inflator kit
- Tire Pressure Monitoring System- Wheels: steel- Front wipers: variable intermittent
- Power windows- Rear wiper: intermittent- Solar-tinted glass: front
- Window defogger: rear

Option Packages

Factory Installed Packages

Charge Package	
Includes 6.6 kW output onboard charger and CHAdeMO quick charge port.	\$1,770
Option Packages Total	
	\$1,770