

2017 Ford F-250 Super Duty XLT 4x4

View this car on our website at texasmotorcars.com/7299575/ebrochure



Our Price **\$40,982**

Specifications:

Year:	2017
VIN:	1FT7W2BTXHED31358
Make:	Ford
Stock:	D31358
Model/Trim:	F-250 Super Duty XLT 4x4
Condition:	Pre-Owned
Body:	Pickup Truck
Exterior:	[Z1] Oxford White
Engine:	Power Stroke 6.7L Biodiesel Turbo V8 440hp 925ft. lbs.
Interior:	Medium Earth Gray Cloth
Transmission:	6-Speed Shiftable Automatic
Mileage:	82,492
Drivetrain:	4 Wheel Drive

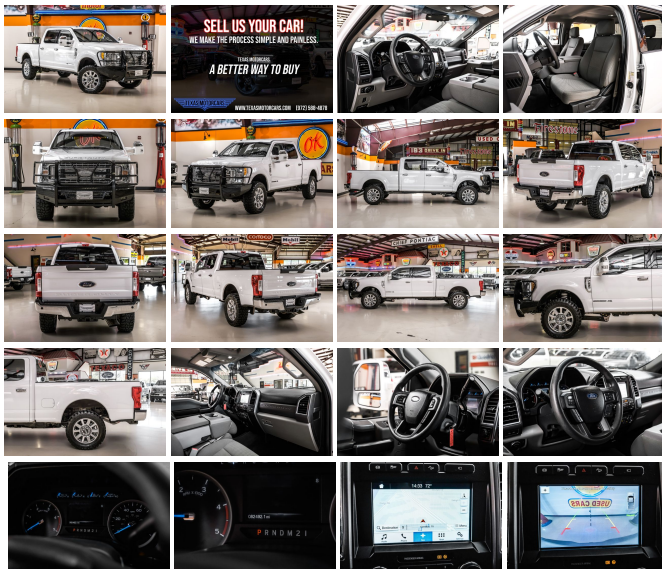
2017 Ford F-250 Super Duty XLT 4x4

Imagine yourself behind the wheel of this rugged yet refined 2017 Ford F-250 Super Duty XLT 4x4, a powerhouse of performance and durability that stands tall with only 82,492 miles logged. The bold white exterior is a statement of strength, perfectly complemented by the comfortable and stylish gray cloth interior that awaits to cradle you in comfort on every journey.

Under the hood lies the heart of this beast – a Power Stroke 6.7L Biodiesel Turbo V8 engine, delivering a staggering 440hp and 925ft. lbs. of torque. Coupled with a 6-Speed Shiftable Automatic transmission, this truck promises effortless power delivery and towing prowess that's simply unmatched. And with the 3.55 Electronic Locking Axle Ratio, you can count on superior traction and control, no matter what you're hauling or where you're headed.

This Super Duty doesn't just work hard; it's smart, too. Take advantage of the Voice-Activated Navigation System that ensures you're never lost, and stay connected with the SYNC 3 Communications and Entertainment System, featuring enhanced voice recognition, Apple CarPlay, Android Auto, and a suite of other tech-savvy amenities. The PowerScope Trailer Tow Mirrors extend your vision, making towing and maneuvering safer and more convenient, while the Rear CHMSL Camera offers a clear view when reversing, ensuring every move you make is a confident one.

When the terrain gets tough, the FX4 Off-Road Package comes into play. With hill descent control, skid plates, and specially tuned shocks, this truck is an off-road champion. And for those who live for adventure,



the Camper Package and Snowplow/Camper Package provide heavy-duty support for your outdoor escapades, ensuring stability and safety when you're heading off the beaten path. The custom bumper and grille guard add utility especially for off-road situations.

Don't miss your chance to own a piece of Ford's legacy of toughness and innovation. Come see why this isn't just a purchase; it's an investment in power, performance, and prestige.

This vehicle has been reduced at below wholesale prices.

READY for work and play! Give us a call today!

Can't make it in? We offer shipping all over the United States. Ask your salesperson for shipping quotes.

Financing is available with competitive rates! Get pre-approved in no time by filling out a credit application on the finance section of our website! We also offer industry leading, highly rated warranty options so you can select one perfect for your specific vehicle needs.

All vehicles are priced for QUICK SALE. Call us today to see how easy it is to buy a vehicle at Texas Motorcars.

Texas Motorcars in Addison is a family owned and operated business. We are committed to delivering the best possible service!

Se habla Español!

Texas Motorcars "A Better Way To Buy!"

2017 Ford F-250 Super Duty XLT 4x4

Texas Motorcars - 972-521-7788 - View this car on our website at texasmotorcars.com/7299575/ebrochure

Vehicle History Report : as Of 05/04/2024



Snapshot

2017 FORD F-250 SUPER DUTY XLT

No accidents or damage reported to CARFAX

21 Service history records

2 Previous owners

Personal vehicle

Last owned in Texas

82,492 Last reported odometer reading

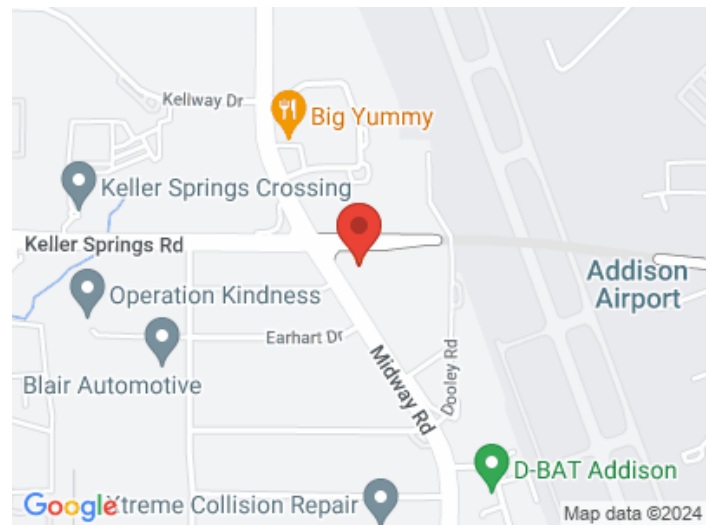


FREE CARFAX Report

See the full CARFAX Report for additional information

*carfax Snapshot is a reflection of available information on the date the report was pulled. carfax is constantly being updated with new information and is subject to change at any time.

Our Location :



2017 Ford F-250 Super Duty XLT 4x4

Texas Motorcars - 972-521-7788 - View this car on our website at texasmotorcars.com/7299575/ebrochure

Installed Options

Interior

- Air filtration- Front air conditioning- Floor mat material: carpet- Floor mats: front
- Cruise control- Multi-function remote: keyless entry- Power outlet(s): 12V front
- Power steering- Steering wheel: tilt and telescopic- Clock- Compass- Digital odometer
- External temperature display- Multi-function display- Powertrain hour meter
- Trip odometer- Front seat type: 40-20-40 split bench - Rear seat folding: folds up
- Rear seat type: 60-40 split bench - Upholstery: cloth

Exterior

- Front bumper color: chrome- Pickup bed light- Tailgate: lift assist- Side mirrors: heated
- Towing mirrors- Spare tire kit- Spare wheel type: steel- Tire Pressure Monitoring System
- Wheels: painted aluminum alloy- Power windows- Rear privacy glass
- Solar-tinted glass: front

Option Packages

Factory Installed Packages

["Voice-Activated Navigation System", "Includes voice activated HD navigation system with SiriusXM Traffic and Travel Link with 5 year pre-paid subscription."]

\$570

["Drop-In Bedliner"]

\$350

["PowerScope Trailer Tow Mirrors", "Includes power telescoping, power folding trailer tow mirrors with power and heated glass, turn signals, driver side auto-dimming, high-intensity LED security approach lamps, utility lighting system and LED side mirror spotlights."]

\$280

["Camper Package", "Includes heavy service front springs (1 Up

upgrade above the spring computer selected as a consequence of options chosen. Not included if maximum springs have been computer selected as standard equipment), rear stabilizer bar, slide-in camper certification and rear auxiliary springs."]

\$160

["FX4 Off-Road Package", "Includes hill descent control, transfer case and fuel tank skid plates, off-road tuned shocks, and unique FX4 Off Road box decal."]

\$295

["SYNC 3 Communications and Entertainment System", "Includes SYNC 3 enhanced voice recognition communications and entertainment system with 911 assist and AppLink, Apple CarPlay, Android Auto, 110V/400W outlet, 8 In. LCD touchscreen in center stack with swiping, two smart charging USB ports, compass and clock display. (Pinch-to-zoom capabilities included with available Navigation System.)"]

\$115

["Snowplow/Camper Package", "Includes computer selected springs for snowplow application, extra heavy duty alternator, heavy duty front springs, rear auxiliary springs, rear stabilizer bar and slide-in camper certification."]

\$245

["XLT Premium Package", "Includes 18 inch chrome aluminum wheels, LT275/65R18E all-season BSW tires, chrome exhaust tip, two front chrome tow hooks, unique chrome mirror caps, chrome pickup bed tie-down hooks, chrome tailgate handle, body color door handles with chrome insert, 6 inch angular chrome step bars, fog lamps, automatic lock and unlock, 4.2 inch LCD productivity screen, 8 inch center stack screen, power adjustable pedals, 8-way power adjustable driver seat with heat, 2-way manual passenger seat with heat, SecuriCode keyless entry keypad on driver side, reverse sensing system, and SYNC 3."]

\$3,025

["3.55 Electronic Locking Axle Ratio"]

\$390

["Rear CHMSL Camera", "Includes LED center high-mounted stop lamp with cargo light and rear video camera with display in center stack screen."]

\$200

Option Packages Total

\$5,630