

2008 Mercedes-Benz S-Class S 63 AMG

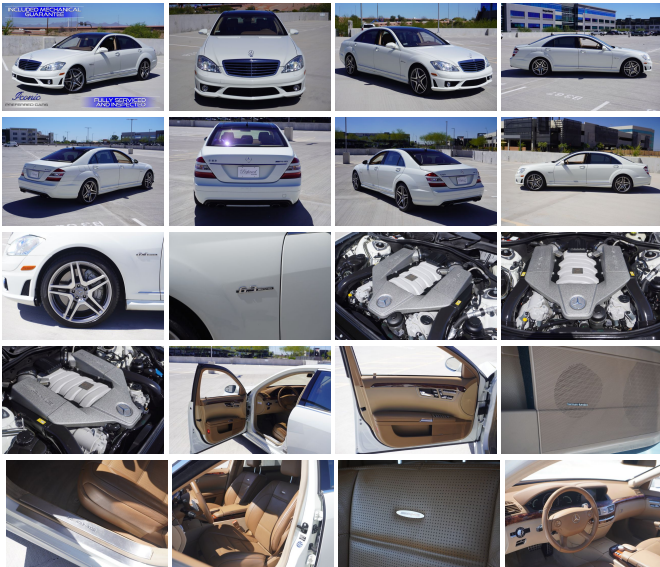
View this car on our website at iconicpreferred.com/7299472/ebrochure



Our Price **\$19,919**

Specifications:

Year:	2008
VIN:	WDDNG77X88A184385
Make:	Mercedes-Benz
Stock:	184385
Model/Trim:	S-Class S 63 AMG
Condition:	Pre-Owned
Body:	Sedan
Exterior:	[650] Arctic White
Engine:	6.2L V8 518hp 465ft. lbs.
Interior:	Cashmere/Savanna Premium Leather Leather
Transmission:	7-Speed Shiftable Automatic
Mileage:	72,276
Drivetrain:	Rear Wheel Drive
Economy:	City 11 / Highway 17



PLEASE CALL OR TEXT 480-843-5171 FOR APPOINTMENT. INCLUDES AN ARMOR SHEILD 50/50 GUARANTEE. THIS 2008 MERCEDES BENZ S63 AMG HAS A CERTIFIED CLEAN VEHICLE HISTORY REPORT AND HAS BEEN FULLY INSPECTED & RECONDITIONED FOR YOUR CONVENIENCE. WE MAKE THE EFFORT TO INSURE ALL OUR INVENTORY LOOK FLAWLESS, SO WHEN YOU WALK IN TO OUR SHOWROOM YOU WILL BE LOOKING AT THE MOST BEAUTIFUL CAR IN THE MARKET. THIS CAR HAS HAD A CONCOURSE DETAIL, PAINT RESTORATION, DING / DENT REMOVAL AND LEATHER RECONDITIONING. WE SPEND THE TIME AND MONEY TO INCREASE AND HELP PRESERVE THE VALUE OF YOUR NEXT VEHICLE. THIS AWESOME AMG S63 IS IN BEAUTIFUL CONDITION AND HAS ORIGINAL LOW MILES. THIS AMG BENZ HAS A HAND BUILT PERFORMANCE ENGINE THAT BOASTS 518 NATURALLY ASPIRATED HORSE POWER PLUS IT RUNS SMOOTH AND EFFICIENT. THIS LUXURY SEDAN HAS THE PREMIUM III PACKAGE THAT FEATURES NIGHT VIEW CAMERA, DISCTRONIC CRUISE AND A PANORAMIC MOON ROOF, IT ALSO INCLUDES RECLINING REAR SEATS THAT ARE COOLED AND HEATED. THIS S63 HAS GPS NAVIGATION, MULTI-ZONE CLIMATE CONTROL, BACK UP CAMERA AND A PREMIUM HARMON / KARDON AUDIO SYSTEM THAT ROCKS. COME DOWN TO OUR ALL INDOOR AND CLIMATE CONTROLLED SHOWROOM TODAY LOCATED IN SUNNY TEMPE, ARIZONA AND SEE FOR YOURSELF. PLEASE CALL OR TEXT (480)843-5171 FOR APPOINTMENT. THIS LOW ADVERTISED PRICE IS AN INTERNET CASH SPECIAL, CUSTOM TAILORED FINANCING IS AVAILABLE. WE OFFER KELLY BLUE BOOK FAIR TRADE IN VALUE ON MOST TRADES. HIGHEST AND FRIENDLY

TRADE-IN VALUE ON MOST TRADES, HONEST AND FRIENDLY STAFF, 3 MONTH 3,000 MILE GUARANTEE AND DISCOUNTED PARTS & SERVICE FOR ALL CUSTOMERS. ARE YOU TIRED OF LOOKING AT CARS OTHER DEALERS ADVERTISE AS PERFECT CONDITION AND COME TO FIND OUT THEY ARE NOT WHAT YOU EXPECTED? YOU NEED TO SEE THE INVENTORY AT ICONIC PREFERRED CARS. WE TAKE PRIDE IN STOCKING THE CLEANEST CARS AT COMPETITIVE PRICES. ICONIC PREFERRED CARS SERVING AZ FOR OVER 27 YEARS. "IF I WOULDN'T PARK IT IN MY OWN GARAGE, YOU BET YOU WON'T FIND IT AT MY DEALERSHIP". WWW.ICONICPREFERRED.COM, *WHITE GLOVE DELIVERY IS SUBJECT TO A \$199.00 OR MORE FEE DEPENDENT ON DELIVERY DISTANCE.

2008 Mercedes-Benz S-Class S 63 AMG

Iconic Preferred Cars - 4808435171 - View this car on our website at iconicpreferred.com/7299472/ebrochure

Vehicle History Report : as Of 05/20/2024



Snapshot

2008 MERCEDES-BENZ S-CLASS S 63 AMG



Accident reported



25 Service history records



3 Previous owners



Personal vehicle



Last owned in Montana



72,425 Last reported odometer reading



FREE CARFAX Report

See the full CARFAX Report for additional information

*carfax Snapshot is a reflection of available information on the date the report was pulled. carfax is constantly being updated with new information and is subject to change at any time.

Our Location :



2008 Mercedes-Benz S-Class S 63 AMG

Iconic Preferred Cars - 4808435171 - View this car on our website at iconicpreferred.com/7299472/ebrochure

Installed Options

Interior

- Air filtration: active charcoal- Front air conditioning: automatic climate control
- Front air conditioning zones: dual- Rear vents: second row
- Armrests: rear center folding with storage- Center console trim: leather- Dash trim: alloy
- Door trim: alloy- Floor mat material: carpet- Floor mats: front- Shift knob trim: alloy
- Steering wheel trim: leather- Cargo area light- Cruise control
- Easy entry: power driver seat- Memorized settings: 3 driver
- Multi-function remote: keyless entry- Power outlet(s): 12V front
- Power steering: variable/speed-proportional- Rearview mirror: auto-dimming
- Steering wheel: tilt and telescopic- Sunshade: power rear window
- Universal remote transmitter- Clock- Compass- External temperature display
- Trip odometer- Driver seat: active bolstering- Driver seat power adjustments: 14
- Front seat type: sport bucket - Passenger seat: heated
- Passenger seat power adjustments: 14- Rear seat type: bench
- Upholstery: premium leather

Exterior

- Rear trunk/liftgate: power operated- Daytime running lights
- Exterior entry lights: approach lamps- Front fog lights- Headlight cleaners
- Rear fog lights- Side mirror adjustments: power- Side mirrors: driver side only heated
- Tire Pressure Monitoring System- Front wipers: rain sensing
- Heated windshield washer jets- Heated windshield wiper rests- Window defogger: rear

Option Packages

Factory Installed Packages

Panorama Sunroof	\$1,010
DISTRONIC PLUS Adaptive Cruise Control	\$2,870
Heated and Active Ventilated Rear Seats Includes multi-level heated and ventilated rear seats. Miniature ventilation fans embedded in the rear seats circulate air through perforations in the rear seat upholstery.	\$1,690
Individual Rear Seats Includes two individual rear seats and a wood-trimmed rear center console. (The center console replaces the rear center seating position.)	\$825
DISTRONIC PLUS Package Includes adaptive cruise control, parking assist, and blind spot assist.	\$2,850
Premium III Package Includes Dynamic Rear View Monitor and Night View Assist. Dynamic Rear View Monitor displays the view behind the vehicle onto the dashboard mounted monitor when the vehicle is shifted into reverse. Night View Assist displays the forward view onto the dashboard mounted monitor, derived from an infra-red camera to provide an enhanced forward view in low visibility conditions. (The Dynamic Rear View Monitor does not provide an audible feedback system to alert the driver of nearby obstacles.)	\$2,090
Rear Seat Package Includes a 8-way power rear seats (6-way power plus power head restraints), Active Ventilated and heated rear seats and four zone climate control.	\$2,920
Option Packages Total	\$14,255

Iconic Preferred Cars

iconicpreferred.com

4808435171

2175 E 5th ST

Tempe, Arizona 85281

© 2024 AutoRevo - All rights reserved. - Powered by AutoRevo