

# 2019 Ford F-250 Super Duty XL 4x4

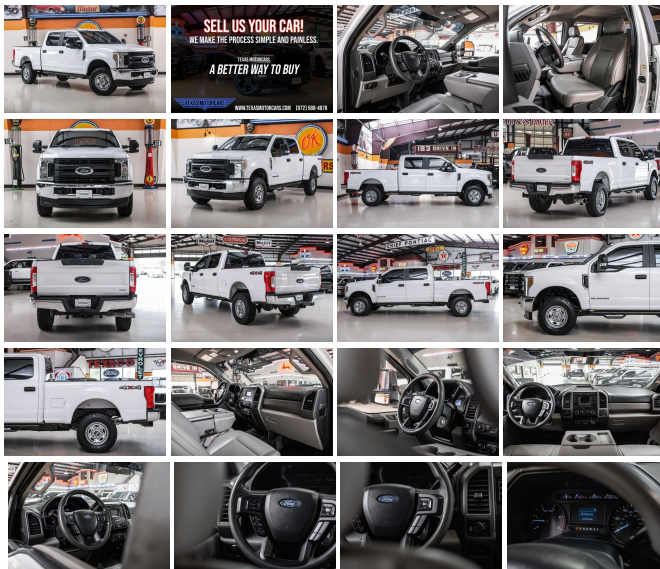
View this car on our website at [mrcarguys.com/7299089/ebrochure](http://mrcarguys.com/7299089/ebrochure)



Our Price **\$34,983**

## Specifications:

<b>Year:</b>	2019
<b>VIN:</b>	1FT7W2BT6KEF58618
<b>Make:</b>	Ford
<b>Stock:</b>	F58618
<b>Model/Trim:</b>	F-250 Super Duty XL 4x4
<b>Condition:</b>	Pre-Owned
<b>Body:</b>	Pickup Truck
<b>Exterior:</b>	[Z1] Oxford White
<b>Engine:</b>	Power Stroke 6.7L Biodiesel Turbo V8 450hp 935ft. lbs.
<b>Interior:</b>	Medium Earth Gray Vinyl
<b>Transmission:</b>	6-Speed Shiftable Automatic
<b>Mileage:</b>	118,236
<b>Drivetrain:</b>	4 Wheel Drive

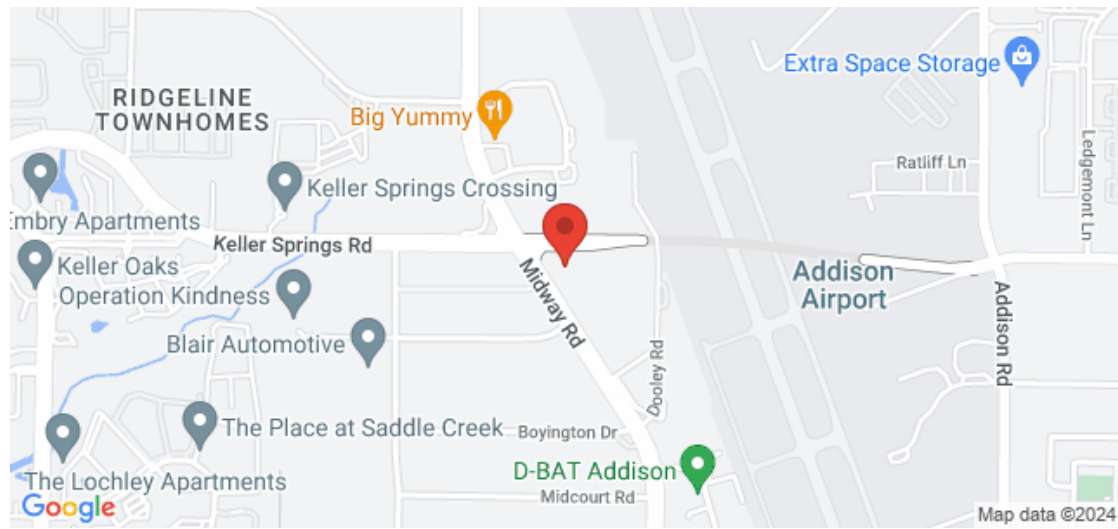


2019 Ford F-250 Super Duty XL 4x4 Dive into the realm of power and durability with the 2019 Ford F-250 Super Duty XL 4x4, a titan among trucks that's ready to conquer the toughest of jobs and the roughest of terrains. The heart of this beast is a Power Stroke 6.7L Biodiesel Turbo V8 engine, delivering a thunderous 450 horsepower and 935 ft. lbs. of torque. Coupled with a 6-Speed Shiftable Automatic transmission, this truck promises a smooth yet forceful ride, capable of handling heavy payloads with ease. Tackle any terrain confidently with the LT245/75R17E BSW All-Terrain Tires, and take on challenging environments with the Skid Plate Package, protecting crucial undercarriage components. The 3.55 Electronic Locking Axle Ratio further bolsters your off-road and towing capabilities, ensuring that no destination is out of reach. The Tough Bed Spray-In Bedliner is a testament to this truck's readiness for hard work, safeguarding your cargo area against damage and wear. The bedliner is complemented by the utility of Uptfitter Switches, allowing for the easy addition of accessories or tools. When it comes to towing, the Trailer Brake Controller integrates seamlessly, providing reliable control over your trailer's braking system. For those early mornings and cold starts, the Remote Vehicle Start system offers the luxury of a pre-warmed or cooled vehicle, ensuring comfort from the moment you step in. And when the job runs late, the Rear CHMSL Camera, complete with an LED stop lamp and cargo light, provides excellent visibility for reversing and managing cargo in low-light conditions. Don't miss the opportunity to own a vehicle that embodies strength and versatility. This Ford F-250 is waiting to prove its worth to you. This vehicle has been reduced at below wholesale prices. READY for work and play! Give us a call today! Can't make it in? We offer shipping all over the United States. Ask your salesperson for shipping quotes. Financing is available with

2019 Ford F-250 Super Duty XL 4x4

Mr Car Guys - 214-732-7859 - View this car on our website at [mrcarguys.com/7299089/ebrochure](http://mrcarguys.com/7299089/ebrochure)

### Our Location :



2019 Ford F-250 Super Duty XL 4x4

Mr Car Guys - 214-732-7859 - View this car on our website at [mrcarguys.com/7299089/ebrochure](http://mrcarguys.com/7299089/ebrochure)

### Installed Options

#### Interior

- Air filtration- Power outlet(s): 12V front- Clock- Digital odometer
- External temperature display- Powertrain hour meter- Rear seat folding: folds up
- Rear seat type: 60-40 split bench

#### Exterior

- Tailgate: lift assist- Towing mirrors- Spare wheel type: steel
- Tire Pressure Monitoring System- Front wipers: variable intermittent
- Solar-tinted glass: front

Mr Car Guys

[mrcarguys.com](http://mrcarguys.com)

214-732-7859

16000 Midway Rd.

Addison, TX 75001

© 2024 AutoRevo - All rights reserved. - Powered by AutoRevo