

2019 Ford F-250 Super Duty XL 4x4

View this car on our website at texasmotorcars.com/7298883/ebrochure



Our Price **\$32,977**

Specifications:

Year:	2019
VIN:	1FT7W2BT6KEF58618
Make:	Ford
Stock:	F58618
Model/Trim:	F-250 Super Duty XL 4x4
Condition:	Pre-Owned
Body:	Pickup Truck
Exterior:	[Z1] Oxford White
Engine:	Power Stroke 6.7L Biodiesel Turbo V8 450hp 935ft. lbs.
Interior:	Medium Earth Gray Vinyl
Transmission:	6-Speed Shiftable Automatic
Mileage:	118,236
Drivetrain:	4 Wheel Drive

2019 Ford F-250 Super Duty XL 4x4

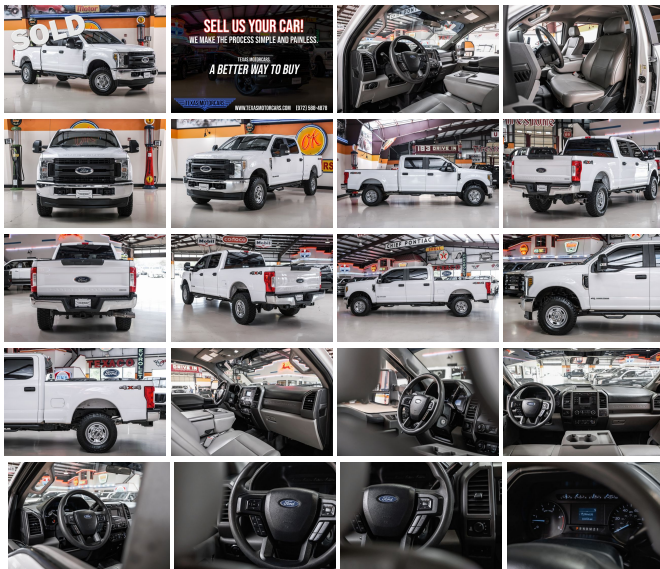
Dive into the realm of power and durability with the 2019 Ford F-250 Super Duty XL 4x4, a titan among trucks that's ready to conquer the toughest of jobs and the roughest of terrains. The heart of this beast is a Power Stroke 6.7L Biodiesel Turbo V8 engine, delivering a thunderous 450 horsepower and 935 ft. lbs. of torque. Coupled with a 6-Speed Shiftable Automatic transmission, this truck promises a smooth yet forceful ride, capable of handling heavy payloads with ease.

Tackle any terrain confidently with the LT245/75R17E BSW All-Terrain Tires, and take on challenging environments with the Skid Plate Package, protecting crucial undercarriage components. The 3.55 Electronic Locking Axle Ratio further bolsters your off-road and towing capabilities, ensuring that no destination is out of reach.

The Tough Bed Spray-In Bedliner is a testament to this truck's readiness for hard work, safeguarding your cargo area against damage and wear. The bedliner is complemented by the utility of Upfitter Switches, allowing for the easy addition of accessories or tools. When it comes to towing, the Trailer Brake Controller integrates seamlessly, providing reliable control over your trailer's braking system.

For those early mornings and cold starts, the Remote Vehicle Start system offers the luxury of a pre-warmed or cooled vehicle, ensuring comfort from the moment you step in. And when the job runs late, the Rear CHMSL Camera, complete with an LED stop lamp and cargo light, provides excellent visibility for reversing and managing cargo in low-light conditions.

Don't miss the opportunity to own a vehicle that embodies strength and



Don't miss the opportunity to own a vehicle that embodies strength and versatility. This Ford F-250 is waiting to prove its worth to you.

This vehicle has been reduced at below wholesale prices.

READY for work and play! Give us a call today!

Can't make it in? We offer shipping all over the United States. Ask your salesperson for shipping quotes.

Financing is available with competitive rates! Get pre-approved in no time by filling out a credit application on the finance section of our website! We also offer industry leading, highly rated warranty options so you can select one perfect for your specific vehicle needs.

All vehicles are priced for QUICK SALE. Call us today to see how easy it is to buy a vehicle at Texas Motorcars.

Texas Motorcars in Addison is a family owned and operated business. We are committed to delivering the best possible service!

Se habla Español!

Texas Motorcars "A Better Way To Buy!"

2019 Ford F-250 Super Duty XL 4x4

Texas Motorcars - 972-521-7788 - View this car on our website at [texasmotorcars.com/7298883/ebrochure](https://www.texasmotorcars.com/7298883/ebrochure)

Vehicle History Report : as Of 05/16/2024

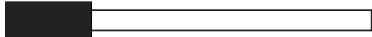


Snapshot

2019 FORD F-250 SUPER DUTY XL



Damage reported: minor damage



MINOR MODERATE SEVERE

13 Service history records



2 Previous owners



Types of owners: Rental, Lease



118,236 Last reported odometer reading



FREE CARFAX Report

See the full CARFAX Report for additional information

*carfax Snapshot is a reflection of available information on the date the report was pulled. carfax is constantly being updated with new information and is subject to change at any time.

Our Location :



2019 Ford F-250 Super Duty XL 4x4

Texas Motorcars - 972-521-7788 - View this car on our website at texasmotorcars.com/7298883/ebrochure

Installed Options

Interior

- Air filtration- Front air conditioning- Power outlet(s): 12V front- Power steering
- Steering wheel: tilt and telescopic- Clock- Digital odometer- External temperature display
- Powertrain hour meter- Front seat type: 40-20-40 split bench - Rear seat folding: folds up
- Rear seat type: 60-40 split bench

Exterior

- Pickup bed light- Tailgate: lift assist- Towing mirrors- Spare wheel type: steel
- Tire Pressure Monitoring System- Wheels: painted steel
- Front wipers: variable intermittent- Solar-tinted glass: front

Option Packages

Factory Installed Packages

["LT245/75R17E BSW All-Terrain Tires"]	\$165
["Skid Plate Package", "Includes transfer case and fuel tank skid plates."]	\$100
["Tough Bed Spray-In Bedliner", "Includes tailgate guard, black box bed tie down hooks, and black bed attachment bolts."]	\$595
["Remote Vehicle Start"]	\$250
["Power Equipment Group", "Includes accessory delay, power door locks, power tailgate lock, remote keyless entry, SecuriLock passive anti-theft system, inclination/intrusion sensors, power front row windows with one-touch up and down, power second row windows, manually telescoping two-way folding trailer tow mirrors with power and heated glass, heated convex spotter mirror, integrated clearance lamps and turn signals, and upgraded door trim panel. Deletes passenger side lock cylinder."]	\$1,125
["XL Value Package", "Includes SYNC enhanced voice recognition communications and entertainment system, 911 Assist, 4.2 inch LCD display in center stack, AppLink, one smart charging USB port, cruise control with steering wheel mounted controls, chrome front and rear step bumper, and bright chrome center hub covers and center ornaments. Does not include rear bumper when ordered with 66D Pickup Box Delete."]	\$1,000
["3.55 Electronic Locking Axle Ratio"]	\$390
["Trailer Brake Controller", "Includes TowCommand integrated trailer brake controller and smart trailer tow connector (compatible with select electric over hydraulic brakes. 7 and 4-way combo trailer tow socket and bracket deleted with 66D Pickup Box Delete.)"]	\$270
["Upfitter Switches", "Includes six (6) switches located in overhead console."]	\$165
["Rear CHMSL Camera", "Includes LED center high-mounted stop lamp with cargo light and rear video camera with display in center stack screen."]	\$200
Option Packages Total	\$4,260

Texas Motorcars

texasmotorcars.com

972-521-7788

16000 Midway Rd

Addison, Texas 75001

© 2024 AutoRevo - All rights reserved. - Powered by [AutoRevo](#)