

# 2018 Porsche Panamera Base

View this car on our website at [vdubsonlydallas.com/7298272/ebrochure](http://vdubsonlydallas.com/7298272/ebrochure)



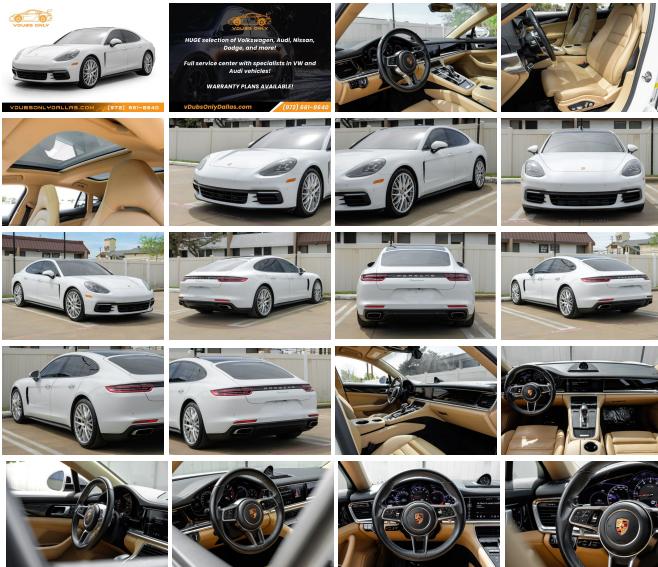
Price **\$47,990**

## Specifications:

<b>Year:</b>	2018
<b>VIN:</b>	WP0AA2A74JL103625
<b>Make:</b>	Porsche
<b>Stock:</b>	103625
<b>Model/Trim:</b>	Panamera Base
<b>Condition:</b>	Pre-Owned
<b>Body:</b>	Sedan
<b>Exterior:</b>	White
<b>Engine:</b>	3.0L Turbo V6 330hp 331ft. lbs.
<b>Interior:</b>	Tan
<b>Transmission:</b>	8-Speed Double Clutch
<b>Mileage:</b>	52,484
<b>Drivetrain:</b>	Rear Wheel Drive
<b>Economy:</b>	City 21 / Highway 28



**VDUBSONLYDALLAS.COM** [972] 661-8640



Step into the world of unparalleled luxury and exhilarating performance with the 2018 Porsche Panamera. A vehicle that not only embodies the apex of automotive engineering but also stands as a testament to the enduring legacy of the Porsche brand. With a mere 52,484 miles on the odometer, this Panamera is eager to carve new paths and create unforgettable memories with its next discerning owner.

At the heart of this masterpiece lies a potent 3.0L Turbo V6 engine, delivering a robust 330 horsepower and 331 lb-ft of torque. Coupled with an ultra-responsive 8-Speed Double Clutch transmission, the Panamera promises a driving experience that is both dynamic and smooth, ensuring that every journey is as thrilling as it is comfortable.

The silhouette of the Panamera is a harmonious blend of sportiness and elegance, a design that commands attention and respect on every road it graces. The interior is a sanctuary of luxury, where every detail has been meticulously crafted to provide an atmosphere of sophistication and high-class comfort. It's not just a car you drive; it's an extension of your own excellence.

The accolades this vehicle has garnered speak volumes about its exceptional value and performance. Honored with Edmunds's Best Retained Value Awards for both the car and luxury brand categories, the Panamera is a smart investment that promises to hold its worth. Kelley Blue Book's Brand Image Awards recognizes it as the Best Performance Luxury Brand, ensuring that your choice is not only emotionally gratifying but also backed by industry experts.

Moreover, the Panamera has been celebrated for its economic sensibility, receiving Kelley Blue Book's 5-Year Cost to Own Award for the Best High-End Luxury Car. This prestigious recognition is a

testament to the Panamera's thoughtful engineering and the meticulous attention to detail that Porsche is renowned for. And with the Best Resale Value Awards for both Luxury Brand and High-End Luxury Car, you can be confident that your investment is as enduring as the vehicle itself.

This 2018 Porsche Panamera is more than just a car; it's a statement—a declaration of your pursuit of perfection and your refusal to settle for anything less than the extraordinary. It's a companion for those who demand the best and understand that true luxury is the culmination of power, beauty, and intelligence.

Don't miss the opportunity to own a vehicle that sets the standard for what a luxury car should be. The 2018 Porsche Panamera is not just a means of transportation; it's a journey into a realm where every drive is a celebration of life's finest moments. Contact us today to experience the epitome of automotive excellence and take the first step towards claiming this icon of performance and prestige as your own.

FOR MORE INFORMATION PLEASE TEXT ME AT (972)522-9856  
IVAN FERNANDEZ

2018 PORSCHE Panamera

Panoramic Sunroof, Lane Keep Assist, Park Assist, Navigation, Backup Camera, Heated Seats, Lumbar Support, Steering Wheel Controls, Bluetooth Technology, Wi-Fi Technology, Hands-Free Communication, BOSE Premium Sound, Dual Climate Control, Satellite Radio, AM/FM Radio, Power Memory Seats, Power Windows/Locks, Power Mirrors, Cruise Control, Traction Control, External Temperature, Compass, Keyless Entry, Automatic Transmission, Well Maintained, Very Clean! Professionally Detailed and much more!

\*\*\*

Come see our indoor showroom in Dallas with 100+ carefully selected luxury vehicles from Volkswagen, Audi, and more! We also have a service department, which offers expert service on VW & Audi vehicles.

We Are Your DFW Premier Used & Pre Owned Dealer Near Dallas, Plano, Frisco, McKinney, Addison, Richardson, Irving, Grand Prairie, Arlington, and other surrounding cities.

We offer financing for any type of credit and first time buyers. We take trade-ins, and offer world-wide shipping, extended warranties, and installation of additional desired items. We welcome third party inspections!

---

2018 Porsche Panamera Base

vDubs Only - 972-661-8640 - View this car on our website at [vdubsonlydallas.com/7298272/ebrochure](http://vdubsonlydallas.com/7298272/ebrochure)

**Our Location :**



2018 Porsche Panamera Base  
 vDubs Only - 972-661-8640 - View this car on our website at [vdubsonlydallas.com/7298272/ebrochure](http://vdubsonlydallas.com/7298272/ebrochure)

**Installed Options**

**Interior**

- Air filtration: active charcoal- Front air conditioning: automatic climate control
- Front air conditioning zones: dual- Rear vents: second row- Cargo area floor mat
- Center console trim: leather- Dash trim: leather- Door sill trim: aluminum
- Door trim: leather- Floor mat material: carpet- Floor mats: front- Interior accents: leather
- Shift knob trim: leather- Steering wheel trim: leather- Ambient lighting- Cargo area light
- Cruise control- Memorized settings: 2 driver- Multi-function remote: keyless entry
- Power outlet(s): 12V front- Power steering: variable/speed-proportional- Push-button start
- Rearview mirror: auto-dimming- Steering wheel: tilt and telescopic
- Universal remote transmitter: garage door opener- Clock- Compass- Digital odometer
- External temperature display- Instrument cluster screen size: 7 in. (dual)
- Multi-function display- Trip odometer- Driver seat: heated
- Driver seat power adjustments: 8- Front seat type: sport bucket - Passenger seat: heated
- Passenger seat power adjustments: 8- Rear seat type: bucket
- Upholstery: leather-trimmed

**Exterior**

- Active grille shutters- Exhaust: dual tip- Front bumper color: body-color
- Mirror color: body-color- Rear spoiler: adjustable- Rear trunk/liftgate: power operated
- Daytime running lights: LED- Exterior entry lights: puddle lamps- Taillights: LED
- Side mirror adjustments: power- Side mirrors: auto-dimming- Spare tire kit: tire sealant
- Tire Pressure Monitoring System- Wheels: aluminum alloy- Front wipers: rain sensing
- Power windows- Rear wiper: intermittent- Tinted glass- Window defogger: rear

**Option Packages**

**Factory Installed Packages**

Adaptive Cruise Control	\$2,890
<b>Option Packages Total</b>	<b>\$2,890</b>

vDubs Only

[vdubsonlydallas.com](http://vdubsonlydallas.com)

972-661-8640

11616 HARRY HINES BLVD

DALLAS, TX 75229

© 2024 AutoRevo - All rights reserved. - Powered by [AutoRevo](#)