

2010 Ford Shelby GT500 Base

View this car on our website at mac513.com/7298076/ebrochure



No Haggle Price **\$34,998**

Specifications:

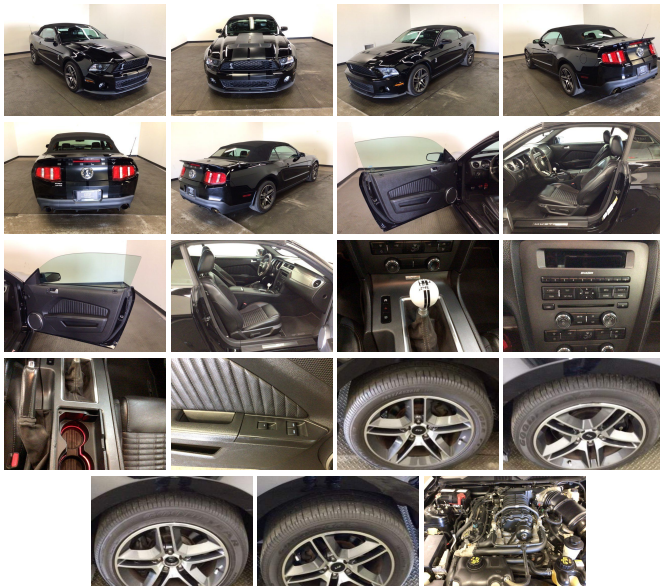
Year:	2010
VIN:	1ZVBP8KS2A5139114
Make:	Ford
Stock:	SA139114
Model/Trim:	Shelby GT500 Base
Condition:	Pre-Owned
Body:	Convertible
Exterior:	[UA] Black
Engine:	5.4L Supercharged V8 540hp 510ft. lbs.
Interior:	Charcoal Black Leather
Transmission:	6-Speed Manual
Mileage:	36,784
Drivetrain:	Rear Wheel Drive
Economy:	City 14 / Highway 22

Black 2010 Ford Mustang Shelby GT500 Shelby GT500 RWD Tremec 6-Speed Manual 5.4L V8 32V Supercharged

5.4L V8 32V Supercharged, 18" x 9.5" Bright Machined Aluminum Wheels, 4-Wheel Disc Brakes, 6-Way Power Driver's Seat, 8 Speakers, ABS brakes, Air Conditioning, Alloy wheels, AM/FM radio: SIRIUS, Brake assist, Bumpers: body-color, CD player, Compass, Convertible roof lining, Delay-off headlights, Driver door bin, Driver vanity mirror, Dual front impact airbags, Dual front side impact airbags, Electronic Stability Control, Front anti-roll bar, Front Bucket Seats, Front Center Armrest, Front fog lights, Front reading lights, Front wheel independent suspension, Fully automatic headlights, Glass rear window, Illuminated entry, Leather Shift Knob, Leather Sport Bucket Seats, Low tire pressure warning, Occupant sensing airbag, Outside temperature display, Panic alarm, Passenger door bin, Passenger vanity mirror, Power convertible roof, Power door mirrors, Power driver seat, Power steering, Power windows, Premium audio system: Shaker 500, Radio data system, Rear anti-roll bar, Rear window defroster, Remote keyless entry, Security system, Shaker 500 AM/FM Stereo w/CDx6/MP3, SIRIUS Satellite Radio, Speed control, Spoiler, Steering wheel mounted audio controls, Tachometer, Tilt steering wheel, Traction control, Trip computer, Variably intermittent wipers, 5.4L V8 32V Supercharged.

Awards:

* 2010 KBB.com Brand Image Awards



Vehicle History Report : as Of 05/02/2024

CARFAX

Snapshot

2010 FORD SHELBY GT500



Branded Title: Not Actual
Mileage



No accidents or damage reported to
CARFAX



12 Service history
records



3 Previous owners



Types of owners: Commercial,
Personal



Last owned in Florida



FREE CARFAX Report

See the full CARFAX Report for additional information

*carfax Snapshot is a reflection of available information on the date the report was pulled. carfax is constantly being updated with new information and is subject to change at any time.

Our Location :



2010 Ford Shelby GT500 Base

Midwest Auto Connection - (513) 825-5555 - View this car on our website at mac513.com/7298076/ebrochure

Installed Options

Interior

- Front air conditioning- Dash trim: alloy- Floor mat material: carpet- Floor mats: front
- Shift knob trim: leather- Steering wheel trim: faux suede- Ambient lighting
- Capless fuel filler system- Cargo area light- Cruise control
- Multi-function remote: keyless entry- Power outlet(s): 12V front- Power steering
- Rearview mirror: auto-dimming- Compass- External temperature display
- Multi-function display- Trip odometer- Driver seat power adjustments: 6
- Front seat type: sport bucket - Passenger seat manual adjustments
- Rear seat type: bench- Upholstery: leather- Upholstery accents: faux suede

Exterior

- Exhaust: dual tip- Front bumper color: body-color- Mirror color: body-color- Rear spoiler
- Stripes: over-the-top- Front fog lights- Taillights: LED- Side mirror adjustments: power
- Convertible roof: power- Spare tire kit: inflator kit- Tire Pressure Monitoring System
- Wheels: aluminum alloy- Front wipers: variable intermittent- Window defogger: rear

Midwest Auto Connection

mac513.com

(513) 825-5555

505 Northland Blvd

Cincinnati, OH 45240

© 2024 AutoRevo - All rights reserved. - Powered by [AutoRevo](#)