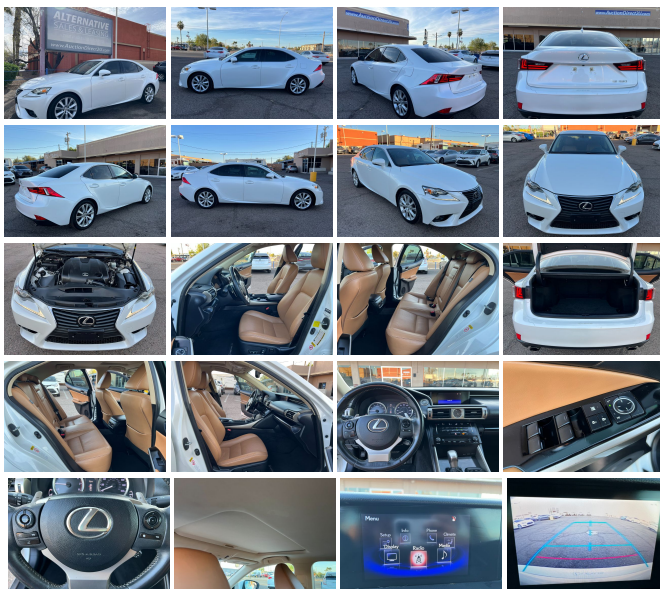


2014 Lexus IS 250 3 MONTH/3,000 MILE NATIONAL POWERTRAIN WARRANTY

View this car on our website at auctiondirect2u.com/7297797/ebrochure



Our Price **\$13,895**

Specifications:

Year:	2014
VIN:	JTHBF1D21E5041027
Make:	Lexus
Model/Trim:	IS 250 3 MONTH/3,000 MILE NATIONAL POWERTRAIN WARRANTY
Condition:	Pre-Owned
Body:	Sedan
Exterior:	[077] Starfire Pearl
Engine:	2.5L V6 204hp 185ft. lbs.
Interior:	Flaxen Leatherette
Transmission:	6-Speed Automatic w/Sequential Shift Mode
Mileage:	136,969
Drivetrain:	Rear Wheel Drive
Economy:	City 21 / Highway 30

2014 LEXUS IS250 2.5L V6 - Good Maintenance History on Carfax, Just Serviced, 136k Actual Miles, Runs and Drives Great, Electronic Control with Intelligence (ECT-i) Drive Mode Select- ECO Normal/Sport/Snow, 17" Aluminum Wheels, Lexus Premium Display Audio System- HD Radio with real-time traffic and weather, Gracenote album art, MP3 player USB integration, SiriusXM Satellite Radio, Bluetooth hands free phone & media streaming, Power Tilt/Slide Moonroof w/One-Touch Open/Close, Smart Access with Push-Button Start/Stop, Driver Seat: 10-way power (including 2-way lumbar) Passenger seat 8-way power Folding rear seats (60/40 Split), Dual Climate Control, Steering Wheel Controls. Clean Title, Per Carfax to shows an accident reported to the driver front on 05/25/2019. Since then it has been repaired and shows no signs of damage. This is a trade-in we acquired. We are now offering it for sale to the public. Vehicle comes with a 3 Month/3,000 Mile National Powertrain Warranty. Financing available. VIN# JTHBF1D21E5041027. \$13,895.00 (480)-468-1229 (Se Habla Español)

Here's the deal -- We are a high volume wholesale brokerage with very little overhead. Most of our vehicles are lease returns or bank repos that are acquired directly from the leasing institutions or banks. What makes us different is the fact that we sell these vehicles for the same amount that we acquire them for (Plus a broker fee of \$499.00 - which is included in the advertised price). That's it. ... For that reason, we are seriously agitating a lot of dealers out there because we are revealing what they actually pay for their vehicles.

Always use common sense and attention to detail first and foremost when buying a car.

Now, if you were paying attention to that first part that means that you can acquire these vehicles for DEALER COST. (Hence the irritability of the dealers). We do not have any doc fees, hidden costs or surprises. AuctionDirect2U has been in business for 20 years and is a licensed, bonded and insured automotive dealership, so 8.30% sales tax and your registration will be the only other amounts added to your price.

These are the same vehicles that you will see at franchise and independent dealerships only priced FAR less. Unlike their big multi million dollar facilities, we have very little overhead. This allows us to pass the savings on and leave a little profitability on the table for you. We're not getting rich off of \$499.00, but our intention is to give enough people a great enough deal that through volume we can still be profitable at the end of the month.

All of our vehicles are under warranty. The majority are still covered under the manufacturers original warranty and if they aren't we acquire a minimum 90 day warranty through a reputable national chain which would assist if any failures should occur.

PRICING - The advertised price on each vehicle is the price we are going to sell it for. With such small margins we cannot haggle with you or lower the price. If you have any questions or would like to come see this vehicle, we can be reached at: (480) 468-1229.

2014 Lexus IS 250 3 MONTH/3,000 MILE NATIONAL POWERTRAIN WARRANTY

Auction-Direct2U - (480) 468-1229 - View this car on our website at auctiondirect2u.com/7297797/ebrochure

Vehicle History Report : as Of 05/09/2024

CARFAX

Snapshot

2014 LEXUS IS 250

Accident reported: minor to moderate damage

MINOR MODERATE SEVERE

11 Service history records

2 Previous owners

Types of owners: Personal lease, Personal

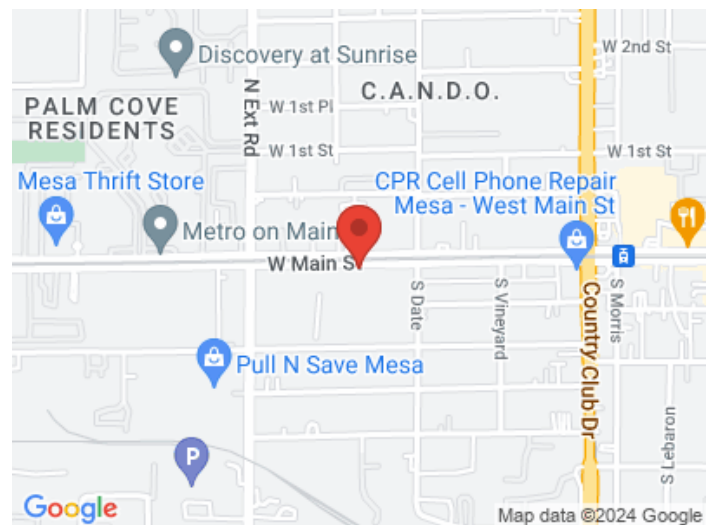
136,969 Last reported odometer reading

FREE CARFAX Report

See the full CARFAX Report for additional information

*carfax Snapshot is a reflection of available information on the date the report was pulled. carfax is constantly being updated with new information and is subject to change at any time.

Our Location :



Installed Options

Interior

- Air filtration- Front air conditioning: automatic climate control
- Front air conditioning zones: dual- Armrests: rear center folding with storage
- Door sill trim: stainless steel- Floor mat material: carpet- Floor mats: front
- Interior accents: leather- Shift knob trim: leather- Steering wheel trim: leather
- Cargo area light- Cruise control- Power outlet(s): 115V- Power steering
- Push-button start- Rearview mirror: auto-dimming- Steering wheel: tilt and telescopic
- Touch-sensitive controls- Universal remote transmitter: Homelink - garage door opener
- Clock- Compass- Digital odometer- External temperature display- Multi-function display
- Trip odometer- Driver seat power adjustments: 10- Front seat type: bucket
- Passenger seat power adjustments: 8- Rear seat folding: split
- Rear seat type: 60-40 split bench - Upholstery: leatherette

Exterior

- Exhaust: dual tip- Front bumper color: body-color- Ground effects/lower spoilers
- Mirror color: body-color- Daytime running lights: LED
- Exterior entry lights: approach lamps- Front fog lights- Taillights: LED
- Side mirrors: heated- Spare wheel type: steel- Tire Pressure Monitoring System
- Wheels: aluminum alloy- Front wipers: variable intermittent
- Power windows: safety reverse- Window defogger: rear

Option Packages

Factory Installed Packages

Backup Camera	\$350
Option Packages Total	\$350